

City of Port Adelaide Enfield

# Inclusive Communities Plan 2019-2024

*Easy English Version*



This plan is in Easy English.  
Go to our website to see the original plan.  
[www.cityofpae.sa.gov.au](http://www.cityofpae.sa.gov.au)



This plan was made by the City of Port Adelaide Enfield.



This plan says how we will include everyone in our City.



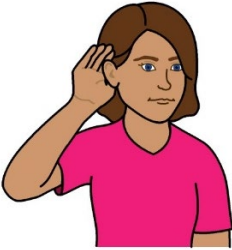
This plan was made with input from the community  
and staff.



We will make sure that Council staff understand and agree to the plan.



We will ask people if the plan works for them.



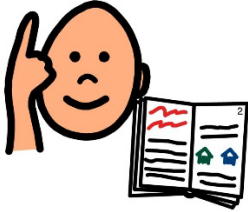
We want to hear about what else we could do to help everyone feel included.



We can change the plan to make it better.

# 7

The plan has 7 themes



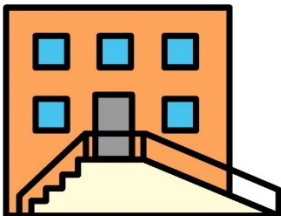
1 Make sure everyone understands the plan.



2 Help staff improve access and inclusion.



3 Have a strong voice and help you have a voice.



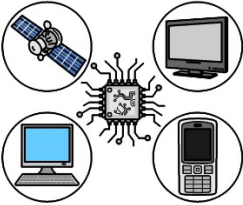
4 Make it easier to access buildings.



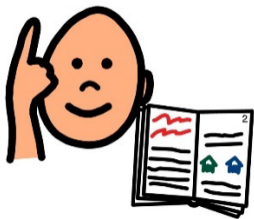
5 Provide services and products that help include people.



6 Communicate in different ways.



7 Use technology to help include people.



## To make sure everyone understands the plan we will

Tell everyone about the plan.



Make sure we follow the plan.



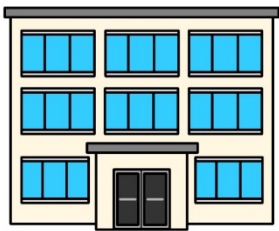
Record what people tell us about being included.



**To make sure staff are improving access and inclusion we will**



Teach the staff how to support people with a disability.



Make sure the businesses we work with are including people.



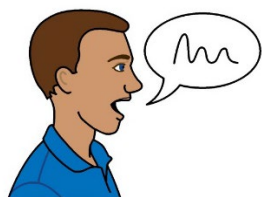
Ask people with a disability to give us advice.



**To have a strong voice and help you have a voice we will**



Talk to other parts of government about how to include people.



Give you a voice.

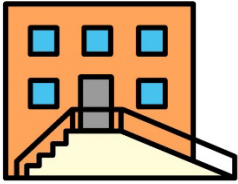


Tell other people what we know.

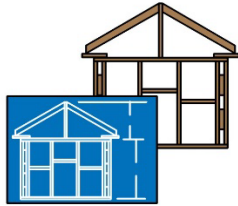


Work together to plan things for people with a disability.





To make it easier to access buildings we will



Make sure new buildings are accessible.



Tell builders how to make buildings accessible.



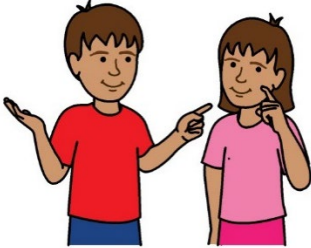
Check how we can improve our building.



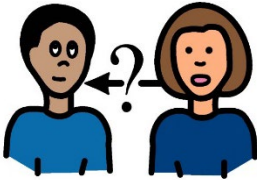
Improve the buildings that lots of people use.



**To provide services and products that help include people we will**



Ask people what they think about our services.



Ask you how you use our services.



Create events everyone can go to.



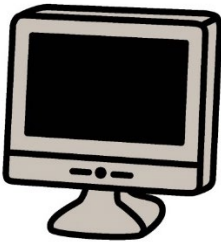
Tell people about what they can do to join in..



To communicate in different ways we will



Make sure everyone can find information about what we do.



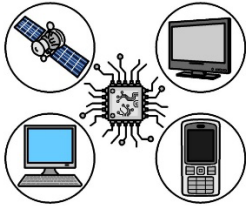
Make our website easy to use.



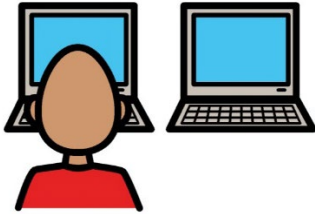
Give information to help people with disability.



Use clear signs.



To use technology to help include people we will



Give technology to help people



Use accessible technology. For example

- A hearing loop
- Closed captions



To talk to us about the plan

Call **8405 6600**

Email [service@cityofpae.sa.gov.au](mailto:service@cityofpae.sa.gov.au)