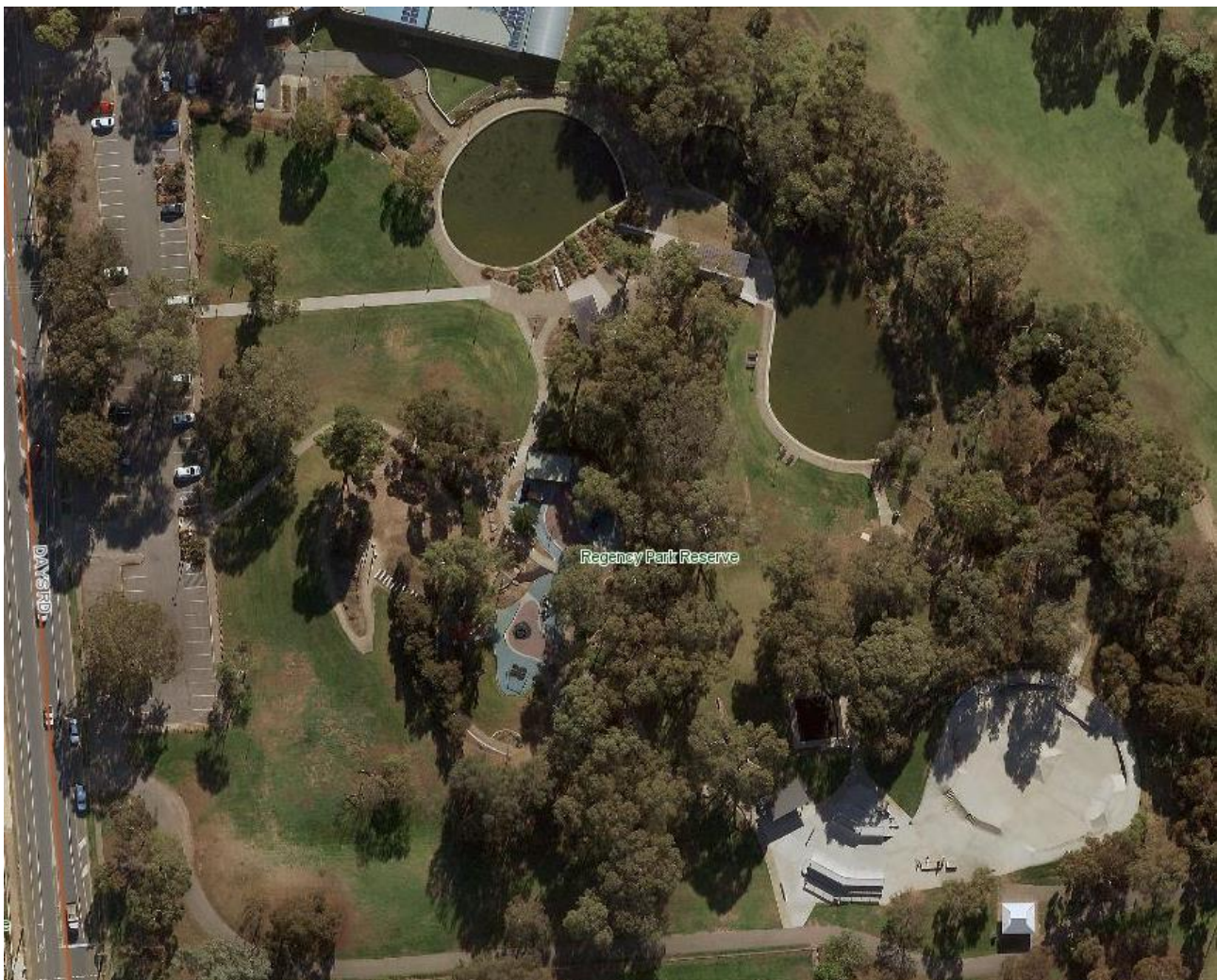


# Regency Park Reserve

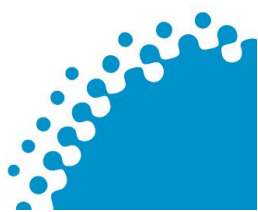
## Days Rd, Regency Park

<b>Power</b>	No
<b>Water</b>	No
<b>Toilets – Qty</b>	Mens - 1   Womens - 1   Disabled - 1 (near the Skate Park)
<b>Toilets – access</b>	Daytime
<b>Parking</b>	Carpark
<b>Playground</b>	Yes – not fenced
<b>BBQ</b>	Yes
<b>Other facilities</b>	Ponds Skate Park Basketball hoop
<b>Gate Access</b>	Reserve Use Permit required for vehicle access off Days Rd
<b>Map Link</b>	<a href="#">Regency Park Reserve on Google Maps</a>
<b>Council website</b>	<a href="#">Conditions of Hire - Reserves</a> <a href="#">Submit a Booking Enquiry</a>





## Bookable Space - Shelter w/ BBQ between playspace & skate park

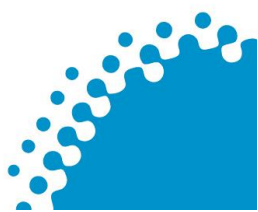




**Gate Access** – Off Days Rd (Reserve Use Permit required for vehicle access)



**Playspace**





Skate Park





## Two non-bookable shelters with BBQ

