



CITY OF  
Port Adelaide Enfield

# P.A.Etoday

The Lights Opening | Recycling Matters | Local Jobs for Local People | Summer Events







*“The City of PAE acknowledges and pays respect to the traditional custodians of the land on which we stand, the Kurna people of the Adelaide Plains and pays respect to Elders past, present and emerging. We recognise and respect their cultural heritage, beliefs and relationships with the land. We acknowledge that they are of continuing importance to the Kurna people living today”*

## Mayor Claire Boan

**W**elcome to our Summer edition of PAE Today where we share the latest news about our community, information about the projects underway and programs on offer here. You can also access PAE Today online at [www.paetoday.com.au](http://www.paetoday.com.au) We've switched on The Lights Community and Sports Centre. We are welcoming our local community to come and learn, participate, try new activities and get involved with what is on offer. From sports and wellbeing, to corporate and social events, this is your community centre. So, come and shine at The Lights! Roy Marten Park, Semaphore Foreshore Playground, Point Malcolm Reserve and Hart's Mill Playspace were recently voted among the best playgrounds in Western Adelaide, in the recent Messenger survey. Make sure you come and experience them, throughout the school holidays.

What goes around comes around, and we're committed to a greener and more sustainable economy for PAE. Not only are we collaborating with our neighbours at the City of Charles Sturt, to build a new state of the art Material Recovery Facility at Kilburn, but we've also joined forces with eight other South Australian Councils to increase our buy back of recycled materials, particularly plastic. We're cutting our waste and reducing our waste costs. You can join us by going green and recycling for Christmas this year.

I would like to acknowledge Cr Michael Iammorone, who recently announced his resignation as a PAE Councillor. He made this difficult decision due to the changes in his external employment, which means he can no longer give the time he'd like to be a Councillor for the Enfield Ward. His highly significant commitment to PAE over the past nine years

has been outstanding. He is highly regarded and has contributed immense knowledge and dedication to his work for our community. We thank you Michael for everything you've given to PAE and us as an elected body.

This means that we have a supplementary election in the Enfield Ward in February. You can nominate for Council or have your say in voting for a new Councillor.

I want to thank my fellow Elected Members, CEO Mark Withers, and the PAE staff for their support and wonderful contributions in making this such a big year in the City of PAE.

Enjoy the festive season, and keep following us at @CityofPAE on social media, or read PAE Today online at [www.paetoday.com.au](http://www.paetoday.com.au)

### Summer Projects in the City of PAE *at a glance*

#### Drainage

Fletcher Rd, Largs Bay

Jetty Rd, Largs Bay

Henry St, Ottoway

Nile St, Port Adelaide

Princes St, Port Adelaide

Pittwater Dr, Windsor Gardens

Millbank Tennis Clubs, Gilles Plains

#### Foreshore Upgrades

Gulf Point Dr, North Haven

#### Foreshore Upgrades

Pym St, Dudley Park

Bethnall Ave, Oakden

Conservatory Ct, Oakden

Hinton Mews, Oakden

#### Road Reconstruction

Pym St, Dudley Park

Bethnall Ave, Oakden

Conservatory Ct, Oakden

Hinton Mews, Oakden

#### Road Reseal

Corconda St, Clearview

Clifton St, Clearview

Gordon Ave, Clearview

Leith St, Ferryden Park

Minch St, Ferryden Park

Sutherland Rd, Ferryden Park

Glenroy Ave, Gilles Plains

Lurline Ave, Gilles Plains

Milbank Ave, Gilles Plains

Manoora St, Greenacres

#### Road Reseal (cont.)

Wootten St, Greenacres

Joyce Ave, Klemzig

Rex Ave, Klemzig

Swan Ave, Klemzig

Osborne Tce, North Haven

Antony St, Oakden

Craigside Ct, Oakden

Hedge Row, Oakden

Hidcote Ct, Oakden

Holts Ct, Oakden

Victoria Dr, Oakden

Cleave St, Port Adelaide

Lipson St, Port Adelaide

Dimboola St, Taperoo

Kanimbla St, Taperoo

Nyora St, Taperoo

This is just a snapshot of the projects we're working on, to see a full list visit [www.cityofpae.sa.gov.au/projects](http://www.cityofpae.sa.gov.au/projects)

# { PAE } Places

## Ward in focus

## Outer Harbor

The Outer Harbor Ward is located at the tip of Lefevre Peninsula, the northernmost tip of our City. It includes the suburbs of Outer Harbor, North Haven, Osborne, Taperoo and Largs North.

According to Manning's Place Names of South Australia, Outer Harbour was spelt with a 'u' in 1908 but changed to be without a 'u' from 1913 with the introduction of the Harbors Act.

Total population  
**12,456**

Total households  
**5,843**

Overseas born  
**23.5%**

### Roy Marten Park

Work was completed in 2018 and included a large playground containing different zones based on age and activity type, basketball and netball courts, a slide, trampolines, fitness stations, sandpit and water play area, free BBQ and sheltered picnic area, landscaping, and two dog parks, with an additional two exeloo toilets installed in 2019.



**Cr Peter Jamieson**

Outer Harbor Ward is surrounded on three sides by water, which is in easy reach to all residents, so there are many active sports and recreational clubs such as rowing, sailing, surf life saving and fishing. There are also many

open space reserves. I can walk into a beautiful Marina full of sailing boats, along extensive (and sometimes secluded) beaches with large ships passing close by, or in a biodiversity park full of remnant vegetation and it is like entering another world. There is a considerable amount of new development which is attracting lots of new residents and young families. My Ward has wide roads and rail leading to Adelaide and beyond. I am truly blessed as a Councillor in the Outer Harbor Ward.



**Cr Vanessa Tulloch**

In my opinion the Outer Harbor Ward is the most beautiful and exciting Ward in PAE. We are surrounded by water - the Port River on one side, and beaches from Largs North, Taperoo and North Haven on the other. The

North Haven Marina precinct is one of my favourite places - I enjoy walking around the scenic path or having dinner and drinks overlooking the water. It's such a stunning outlook and you just can't help but feel like you're on holiday. There are exciting times ahead for PAE with the huge scope of work being undertaken at the Osborne Naval Shipyard, creating amazing career opportunities right here in Osborne for our future generations. I love where I live and my community around me.

## Notes from PAE Council Meetings

### September

- Endorsed our Inclusive Communities Plan, which outlines our commitment to accessibility and inclusivity
- Awarded Aboriginal Tertiary Education Scholarships to Janaye Grose and Sarquin Hunt
- Committed to the upgrade of Regency Park Reserve to create a new home for the Croydon Kings Football Club

### October

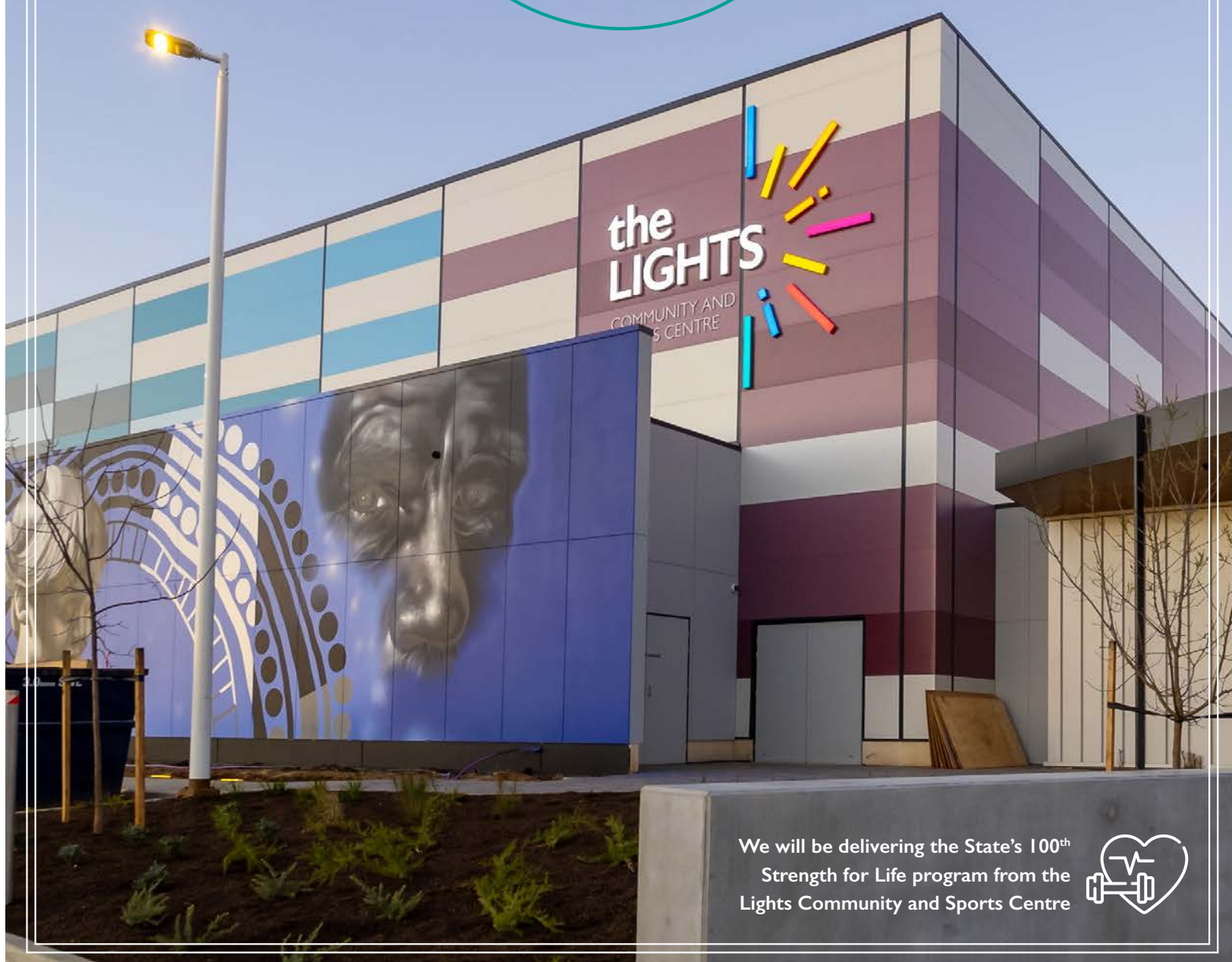
- Heard deputation from Kilburn Football and Cricket Club with 12 month lease granted to the club
- Heard deputation from Woodville West to install female friendly change rooms at Eastern Parade Ottoway
- Approved proposal for Local Area traffic management plan in Greenacres
- Decided to continue placement of Beach Mats in Hall Street, Semaphore and Paxton Street, Semaphore South

### November

- Pledged to participate in the Cities Power Partnership Program
- Endorsed the Port River East Stormwater Management Plan
- Endorsed 2018-2019 Annual Financial Statements
- Recognised five years of service for Members Dinh, Osborn, Russell and Tulloch



# THE LIGHTS ARE ON AND EVERYONE'S HOME



We will be delivering the State's 100<sup>th</sup>  
Strength for Life program from the  
Lights Community and Sports Centre



## THE DOORS ARE OPEN AT OUR NEWEST COMMUNITY FACILITY

Our dream for an inclusive community space for the people of Lightsview and surrounding areas came to fruition when more than 2,000 people shared with us the opening of the Lights Community and Sports Centre on Saturday 26 October. The Lights is a welcoming, inclusive

place for all people – regardless of age, cultural background, socio-economic status or ability. The centre offers ways to be active, which are tailored to the needs of our diverse community to support and improve health and wellbeing, with a full program of sports and fitness classes to try out.

In addition to the five full sized courts, there are

also a number of adaptable spaces which can accommodate everything from major events to small gatherings. We can also provide equipment and catering for meetings or training so if you are looking for a place to hold a community, corporate or sporting event please get in touch to discuss the options.

 [www.thelights.com.au](http://www.thelights.com.au)



▲ Courtside mural, The Gathering



▲ Spectrum being painted

▼ Local artists Elizabeth Close and Thomas Readett in front of their mural, Into the Light



## PUBLIC ART AT THE LIGHTS

*Murals help create our places*

*Into the Light* by Elizabeth Close and Thomas Readett is located on the western external wall. This mural helps showcase the Lights as a place for community connection, where people from all cultures are welcome. To explain their choice of subjects, the artists said, "The young Aboriginal female represents First Nations acknowledgement, determination, strength and leadership. The central model represents childhood, curiosity, wonder and growth. The old male model in the background basically

represents a wise gaze, this gaze could tell a million stories and that's why it isn't the full face. The intention is that anyone who looks into eyes like that would have their own connecting story.

Along the eastern external wall, Seb Humphreys and Matt Fortrose's *Spectrum* uses colour, texture and light, in a mix of bold and subtle overlaps. Meanwhile inside the building *The Gathering* by Datsun Tran, which features a parade of animals, explores the two very human themes of competition and co-operation.

## CONTACT YOUR COUNCILLORS

At the City of PAE we have a Mayor and 17 Councillors that are located around seven wards. They are your representatives, so if you have any concerns, ideas or issues you would like to discuss with them please contact an Elected Member in your Ward.

### Mayor

Claire Boan • 8405 6773

[claire.boan@cityofpae.sa.gov.au](mailto:claire.boan@cityofpae.sa.gov.au)

### Northfield Ward

Cr Mark Basham JP • 0418 809 364

[mark.basham@cityofpae.sa.gov.au](mailto:mark.basham@cityofpae.sa.gov.au)

Cr Hannah Evans JP • 0433 385 002

[hannah.evans@cityofpae.sa.gov.au](mailto:hannah.evans@cityofpae.sa.gov.au)

Cr Matt Osborn • 0402 760 028

[matt.osborn@cityofpae.sa.gov.au](mailto:matt.osborn@cityofpae.sa.gov.au)

### Klemzig Ward

Cr Tony Barca • 0418 891 321

[tony.barca@cityofpae.sa.gov.au](mailto:tony.barca@cityofpae.sa.gov.au)

Cr Paul Russell • 0407 500 881

[paul.russell@cityofpae.sa.gov.au](mailto:paul.russell@cityofpae.sa.gov.au)

### Enfield Ward

Cr Carol Martin OAM JP • 0417 828 195

[carol.martin@cityofpae.sa.gov.au](mailto:carol.martin@cityofpae.sa.gov.au)

Cr Barbara Clayton • 0411 816 800

[barbara.clayton@cityofpae.sa.gov.au](mailto:barbara.clayton@cityofpae.sa.gov.au)

*Third seat vacant until supplementary election*

### Parks Ward

Cr John Croci JP • 0481 091 022

[john.croci@cityofpae.sa.gov.au](mailto:john.croci@cityofpae.sa.gov.au)

Cr Kim Dinh • 0410 729 255

[kim.dinh@cityofpae.sa.gov.au](mailto:kim.dinh@cityofpae.sa.gov.au)

Cr Kat Mitchell • 0430 275 922

[kat.mitchell@cityofpae.sa.gov.au](mailto:kat.mitchell@cityofpae.sa.gov.au)

### Port Adelaide Ward

Cr Steve Vines • 0413 975 064

[steve.vines@cityofpae.sa.gov.au](mailto:steve.vines@cityofpae.sa.gov.au)

Cr Joost den Hartog • 0416 845 204

[joost.denhartog@cityofpae.sa.gov.au](mailto:joost.denhartog@cityofpae.sa.gov.au)

### Semaphore Ward

Cr David Wilkins • 0444 501 539

[david.wilkins@cityofpae.sa.gov.au](mailto:david.wilkins@cityofpae.sa.gov.au)

Cr Helen Wright • 0439 485 737

[helen.wright@cityofpae.sa.gov.au](mailto:helen.wright@cityofpae.sa.gov.au)

### Outer Harbor Ward

Cr Peter Jamieson • 0417 781 516

[peter.jamieson@cityofpae.sa.gov.au](mailto:peter.jamieson@cityofpae.sa.gov.au)

Cr Vanessa Tulloch • 0427 480 790

[vanessa.tulloch@cityofpae.sa.gov.au](mailto:vanessa.tulloch@cityofpae.sa.gov.au)





## Taking recycling

# Into Our Own Hands

## The cycle of recycling

*Summer 2019-20*

**R**esponsibly managing waste to increase what we divert from landfill is an important issue in PAE. Community expectations about waste, the sector and its contribution to our local economy, are rapidly changing. Recycling has environmental, social and financial benefits for our City. At PAE we are always taking action to affordably improve services, support new initiatives, and work with others to watch, learn, support and pilot advancements in resource recovery, its technology and management. While there is a lot that we can and will do, better management of waste is ultimately a shared responsibility. As residents, workers, businesses and visitors, here, your choices and actions make an important contribution to levels of waste generation and what can be avoided, reduced, reused or recycled.

### WHAT GOES AROUND...

#### *New recycling facility on the way*

A new state-of-the-art Material Recovery Facility (MRF) is to be built in Kilburn. This collaborative project with the City of Charles Sturt will enable us to take control of the processing and disposal of recyclable material collected from across the City of PAE. Both Councils undertook a detailed assessment of the proposed MRF option before making a joint decision.

Kerbside recycling is one of our most visible and valued services to our community. There are significant environmental and economic benefits through managing our own recycling in our local area. This is especially the case since the introduction of the Chinese National Sword Policy, which has had a direct effect on how recyclables are currently sorted, processed, and sold into the international commodities market. The new facility will be completed in early 2021, and will provide a continuous, affordable, stable and sustainable service for our residents.

The total estimated build cost of \$12.8 million will be shared equally between the two councils. Both Councils will also explore grant opportunities to offset the construction of the MRF, which is expected to not only create local jobs during the building phase, but also provide up to 20 ongoing jobs to operate the facility once it is completed.

### BUYING IT BACK

#### *Our commitment to a circular economy*

PAE is one of nine State councils that recently committed to buy more materials containing recycled content, such as plastics that can be turned into reusable products such as asphalt. It is expected that our target for the buyback of recycled plastic materials will eventually be equivalent to 50% of the weight of plastics collected in PAE.

This initiative will help us improve the sustainability of waste management practices, ensure the ongoing viability of our recycling system and, over time, reduce our overall waste management costs.



For more information about waste & recycling in the City of PAE: ☎ Waste Line 1800 777 844 🌐 [www.cityofpae.sa.gov.au/waste](http://www.cityofpae.sa.gov.au/waste)

## GO GREEN THIS CHRISTMAS

### *Top tips for recycling during the festive season*

The summer holidays are a wonderful time to create memories, enjoy time off work and share gifts with family and friends. This year, while planning your family get-together, it is important to think about what you can do to reduce waste. The environment and your finances will thank you.

With so much happening over the festive season, we often buy more than we need. This Christmas, why not get creative by recycling or making gifts, buying second-hand items or giving a gift of an experience - such as concert tickets or a massage voucher? Using newspaper or magazines to wrap small gifts is also a creative and fun way to reuse paper. Plus, paper wrapping, cards and cardboard boxes can be placed in your recycling bin or reused another time.

When planning your Christmas cook-up, writing a meal plan can help to ensure you only buy the food that you need. Work out how many people will be attending your Christmas breakfast,

lunch or dinner and look for meal ideas to suit that number of people. After everyone has finished, add the leftovers to reusable containers and store them in the fridge or freezer. When it comes to the main event, use ceramic plates and metal cutlery as well as linen or cotton napkins and tablecloths, rather than disposable items.



## CHRISTMAS WASTE COLLECTION

**This year Christmas and New Year's Day are on a Wednesday. If your wheelie bin collection usually occurs on Wednesday, Thursday or Friday, these collections will be completed one day later over these two weeks. If your bin collection day is a Monday or a Tuesday collection will occur as normal.**

## HOOK, LINE AND THINKER

### *Fishing for compliments*

During summer the number of people fishing on our waterways increases. We have recently installed "Hook, Line and Thinker" bins at our boat ramps at North Haven, Snowden Beach and Garden Island. These bins can be used for the safe disposal of fishing materials such as old line, netting, sinkers, hooks and lures. The bins help to capture fishing litter before it ends up in the Port River and coastal waters, where it causes damage to the fragile ecology of our aquatic environment.

We have been working on this initiative with the Adelaide and Mt Lofty Ranges NRM Board and Conservation Volunteers Australia, who will collect the deposits, record the type of waste collected and dispose of it correctly. Where possible, fishing debris will be recycled and turned into a range of new materials. Other items, such as bait and packaging, still need to be deposited in general or recycling bins.





The flexibility  
around my schooling  
commitments, means  
I can complete year  
12, and I'm earning  
enough to cover my  
living expenses, and  
be financially stable”  
- Olivia

## RISE TO THE TOP

*Providing employment  
opportunities for PAE Youth*

Our PAE Youth and Economic Development teams recently held their second partnership event with PAE businesses, government agencies and Talent RISE recruitment specialists to help find jobs for local youth.

The Local Jobs for Local People program is focused on breaking down barriers that often make that first step to employment a real challenge for our young people. It is a leading example of collaboration between local community, local business and state and local governments, and helps prepare young people to be job ready, connecting them to real job outcomes.

50 young people registered to attend the event and also took part in the pre-screening processes in the lead-up which included the creation of their own “business card” displaying their career aspirations, empowering them to

professionally talk to and exchange details with prospective employers, including local business Sailmaster Tavern.

Eight group training organisations also attended to offer information about their traineeships and apprenticeships that are available across a range of industries. For many of our PAE Youth this was their first ever opportunity to actually meet and discuss their employment aspirations with employers who had vacancies on offer. Glen Chilton, General Manager, Sailmaster Tavern said that he was impressed with the presentations by the job applicants as a result of the selection and pre-screening process undertaken by PAE Youth Engagement Officer, Emily.

“The standard of applicants was very high, and this time around we have selected 40 new staff for our new expanded operations through the Local Jobs for Local People program,” said Glen.

Olivia Szolnoki was chosen from last year's intake to work at the Sailmaster Tavern, through the program, and she said she loves her job there.

“The flexibility around my schooling commitments, means I can complete year 12, and I'm earning enough to cover my living expenses, and be financially stable,” said Olivia.

Another program participant, said he was proud of his own achievements in securing an interview at the event and was committed to his dream of becoming a motor mechanic. Amy Bryan, Youth Recruitment Consultant at Talent RISE said she was dedicated to addressing local youth unemployment.

“At present, youth unemployment rates in the Northern Suburbs of Adelaide sit at a staggering 18.4%. To me that's a heartbreaking figure, so I'm so excited to be able to work with PAE to help our local youth with real job opportunities.



▲ Youth Engagement Officer Emily with young people from across PAE

To learn more, contact the PAE Youth Team: [youthteam@cityofpae.sa.gov.au](mailto:youthteam@cityofpae.sa.gov.au) or 8405 6709





▲ Uncle Lewis O'Brien, Alex Houthuysen and Mayor Claire Boan at the ATSI Awards 2019

## ABORIGINAL AND TORRES STRAIT ISLANDER AWARDS 2019

Celebrating twenty years of recognition

**T**owards the end of 1998, members of the Aboriginal Advisory Board approached Council with an idea that would highlight and promote the great contribution and outstanding achievements of Aboriginal and Torres Strait Islander people within the City. The following year, the first PAE Aboriginal and Torres Strait Islander Awards were held at the Parks Community Centre. This annual awards night is now a highly anticipated event that is celebrated by both the Indigenous and Non-Indigenous community as we walk together as one, in the spirit of goodwill and reconciliation. The twentieth ATSI Awards night was held on 13 November, and as part of the celebration the Aboriginal Advisory Panel, along with Kura Yerlo Inc. and their Elder Group, acknowledged the outstanding contribution of Uncle Lewis O'Brien. Lewis (Uncle Lewis) is a proud and knowledgeable Kurna Elder, who provides cultural advice and guidance and has spent many years as an Aboriginal

Advisory Panel member. Uncle Lewis has been inspirational in the development of the Kurna naming and embedding of culture into landscapes and spaces across Adelaide, particularly in Port Adelaide. He is well known for his Welcome to Country and sharing his experience and wisdom at conferences and events, especially with grassroots community groups.

Since the 1960s Uncle Lewis has been advocating for Aboriginal people. In 1977 he began working with schools, promoting Kurna language and culture. He has maintained a long relationship with the University of South Australia as a visiting Elder, helping to revitalise Kurna language with other Kurna people.

Turning 90 in 2020, Uncle Lewis continues to be mentor, guide and sought after Kurna Elder and he is highly treasured and respected by the community. His willingness to share his knowledge and culture has been invaluable to the City of PAE.



{ PAE }  
People

Roz is making a difference to the lives of others in our local community through her creation of the Opportunity Games, which she runs alongside her planning committee.

2019 marks the fifth year of the event, which was created to enable residents from Supported Residential Facilities (SRFs) to take part in organised games and competitions in a safe and inclusive environment.

Roz remembers organising the first picnic and sports day at Phillips Park and Edgar Oldfield Hall in Semaphore for 26 residents from four local SRFs.

"The day was a resounding success. We were able to get a grant from the City of PAE, and we organised a picnic lunch and games, similar to the kind you may remember playing at primary school.



**It's a great way for our supported care residents to achieve something that is important to them, and help them enjoy positive quality of life."**

"We play tunnel ball, over-and-under ball, basketball, egg-and-spoon race and our own 'OG ball', which is a version of hockey invented especially for the games, that uses long handled plastic forks on a stick.

"Each year the Opportunity Games attracts more people, and competitors embrace the opportunity to throw themselves wholeheartedly into the games, with many coming back to play again, and wanting more turns for more chances to win medals.

Roz shares our view that people should be given an equal opportunity to access programs, services activities and facilities throughout PAE.

*If you know of any unsung heroes that should be acknowledged as PAE People, please contact:*

✉ [communications@cityofpae.sa.gov.au](mailto:communications@cityofpae.sa.gov.au)





## HAVE YOUR SAY IN ENFIELD

### *Supplementary Election in 2020*

Following the resignation of Councillor Iammarrone, there is a vacancy for a Ward Councillor in the Enfield Ward.

If you've ever thought about becoming a Councillor, there is still time to nominate as a candidate for the election. Becoming a member of Council is a great way to represent and help make a difference to your local community and help shape the whole city of PAE. Our Councillors represent the interests of the community and vote on what action will be taken with regard to the community issues that are discussed at Council meetings. We actively encourage nominations from people from diverse backgrounds to ensure that a wide range of views are being represented. Nominations open Thursday 9 January 2020 and close at 12 noon on Thursday 23 January. More information is available on our website. If you live in the Enfield Ward and are on the State (House of Assembly) electoral roll or have completed an enrolment form to join Council's supplementary roll, you will receive a voting form in the mail between Tuesday 4 and Monday 10 February 2020. You will also receive

information about the candidates standing for election in Enfield. Once you have completed your vote, make sure to place it in the reply paid envelope and send it off. Updates about the election process will be available at:

 [ecsa.sa.gov.au/elections/council-elections](https://ecsa.sa.gov.au/elections/council-elections)

*Authorised by Mark Withers, CEO*

## LOCAL WOMEN TAKE THE LEAD

### *New ways to wellbeing*

One of our popular health and wellbeing programs, Wise Move for Women, will be delivered again in 2020. Developed by PAE staff in conjunction with local residents, the program supports women to improve their health and wellbeing, and meet others in their local area. The programs cover a range of topics including self-image, nutrition and mindfulness. Sessions are delivered by staff as well as guest presenters – and sometimes the women themselves have a particular skill, experience or passion they'd like to share. Each program is tailored to the interests of the women participating. This evolving and dynamic program will be back at the Lefevre Community Stadium in Terms 1 and 3, and the Lights Community and Sports Centre in Terms 2 and 4. Possible sessions include

Decluttering, Self Esteem and Self Compassion, Body Kindness and Spring Clean Your Life.

Contact:

 [wellbeing@cityofpae.sa.gov.au](mailto:wellbeing@cityofpae.sa.gov.au)

## BUILD YOUR RESUME RIGHT

### *Help is on hand*

Your resume is often the first interaction you will have with a prospective employer. City of PAE library staff can provide assistance with writing your resume and give you tips for finding employment. We will help you make sure your relevant personal skills and experience are highlighted in your resume.

Local resident Asif recently attended a help session and said, "The library team has a genuine desire and vigilant approach to help clients land their dream jobs. They thoroughly reviewed my CV and cover letter and suggested strategies to get the recruiters' attention. Apart from CV assistance, they also gave me a couple of practical tips and advice to help me in building a strong professional network."

So join a drop in session on Fridays at the Parks Library from 10.30 to 11.30am or book a session at Port Adelaide Library from 10 to 11am on Wednesdays.





## NEWS DELIVERED DIRECT

*Get the latest on your device or phone*

There are thousands of magazines and newspapers to enjoy on your computer, tablet or phone and City of PAE Libraries have recently upgraded our digital magazine platform to PressReader. Available on all your favourite devices, PressReader gives you access to magazines and newspapers from around the world. They are all free with your library card and feature publications in dozens of languages. You can even translate them to a language of your choice! Check it out now at:

 [www.onecard.network/client/en\\_AU/portadelaideenfield/](http://www.onecard.network/client/en_AU/portadelaideenfield/)

## MAKE TIME FOR PLAY

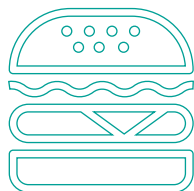
*Community playgroups benefit local families*

Playgroups are a great way for children to learn, develop social and physical skills and make friends. They teach problem solving, communication and social interaction, while having fun. We recently partnered with local Children's Centres to deliver a Playgroup in the Park to engage with local families. The event was held at St Patrick's Reserve, Alberton on 31 October and over 130 people attended.

The aim of the day was to introduce families to playgroup, provide them with information about playgroups in the region, as well as other local services within their community and for them to enjoy fun activities at a local park. If you are looking for a playgroup to join with your children under five, please contact:

 [info@playgroupsa.com.au](mailto:info@playgroupsa.com.au)

 1800 171 882



**There are more than 950 businesses serving food within the City of PAE including restaurants, takeaways, cafés, bakeries, childcare centres and sporting clubs. Our Environmental Health Officers help ensure that food for sale in our community is safe and suitable.**

## TO MARKET TO MARKET

*Get your fresh produce at one of PAE's markets*

There are a number of produce markets around PAE that offer locally grown fresh fruit and vegetables at an affordable cost.

Around the coast, you can shop at the **People's Market** in Port Adelaide every Friday and Saturday and visit the **Torrens Island Market** every Sunday.

The State's biggest outdoor market is the **Gepps Cross Markets**, open every Sunday from 7am, at the site of our last remaining drive-in, which attracts hundreds of stall holders each week.

The **Farm Direct Market** at Windsor Gardens brings a great array of local food and produce to the rear of the Windsor Gardens Hotel on North East Road every Sunday morning.

The **Lights Fresh Community Markets** is located in the Stepping Stone Childcare Centre carpark, on Hampstead Road, and offers a variety of fresh food choices. Open every Sunday morning, it's run by the Greenacres Community Garden, so all money raised stays local.

With all these options, grab your green bags and find some bargains!



## 'DROME IMPROVEMENT

*Revitalising a much loved reserve*

On Saturday 9 November we officially opened the new and improved Hanson Reserve and Velodrome. This project included building a brand new professional grade cycling velodrome, a grassed multi-use area in the centre of the track, floodlighting, a playground, picnic area, a loop path, landscaping and a new car park.

It was built by the City of PAE for a total cost of \$3.29 million, including grant funding of \$780k from SA DPTI Planning and Development Fund, \$250k from SA Office of Recreation Sport and Racing, and \$250k from Sport Australia for a fitness loop path.

For the opening, we welcomed cyclists from across metro Adelaide, Whyalla, Mount Gambier and as far away as Rockhampton, with over 200 riders registered to compete in events and try out the new track. Thanks to Cycling SA, the Australian Institute of Sport, Kilkenny Cycling Club, and Port Adelaide Cycling Club for pulling out all the stops and making our return to Hanson Velodrome a huge success!

## ANTI-RACISM CAMPAIGN

*Sharing lived experiences*

Our work with the Junction Community Centre, an independent community hub in Ottoway, has led to the production of a short film called *Racism - it's not just Black and White*. The film documents how unconscious bias and direct racism have affected people from our community, but also showcases the strength and resilience of local people. We are so proud of

the diversity of our community. We live in one of the most culturally diverse areas in the state, with almost a quarter of our residents coming from non-English speaking backgrounds. To accompany the film, we have developed an anti-racism education package that we are offering to schools, organisations and community groups to help build understanding and awareness while fostering trust between participants. Two facilitators can visit your organisation to lead a one-hour session and facilitate discussion. Educational resources and a copy of the film are also provided.

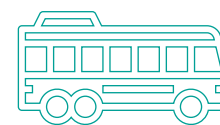
For more information please contact Rodney at the City of PAE on:

 8405 6600

## TOOLS OF THE TRADE

*Men's shed comes to Enfield*

The new Regency Community Men's shed will be open for business from February. The shed is located within the Enfield Community Centre at 540 Regency Road Enfield, and is a place where everyone is welcome to come along and practise craft and trade skills, or learn new ones. Membership is open to both men and women. Participants will be able to work on community as well as individual projects. The Men's shed is part of the nationwide Australian Men's Shed Association, is operated by a steering committee and has been funded by the Department of Premier and Cabinet and the City of PAE. If you are looking for opportunities to build your skills, share stories and meet others with similar interests, there will be an open day on site on Thursday 16 January from 11am to 1pm. An official launch will also be



In response to changes to Adelaide Metro services this Summer we will be trialling a community bus circuit to service North Haven, Osborne, Taperoo, Largs North, Largs Bay, Peterhead, Birkenhead, Exeter, Semaphore, Glanville and Port Adelaide. The service will be known as Number 4, The Harbourline and will operate Wednesday and Friday from 8.30am to 12pm. For more information, call 8405 6600

held on site on Saturday 8 February at 10am.

For more information, contact Jeff on:

 8405 6874



## CRUISE CONTROL

*38 Cruise ships will visit this year*

It's that time again - cruise ship season is nearly upon us! The first ship of the season, the Sea Princess, visited Adelaide on 25 October, and the season ends in April 2020. To encourage visitors to stay local, PAE is working on a number of tourism initiatives, including our new Visit Port Adelaide App. Checking the schedule can help you plan for cruise ship visitors to the coast. You can see a full list of the 2019-2020 cruise ship schedule and all the latest news and photos on the Cruise Ships in Adelaide Facebook page or visit the Flinders Ports website to see the latest arrivals and departures:

 <https://portmis.flindersports.com.au>

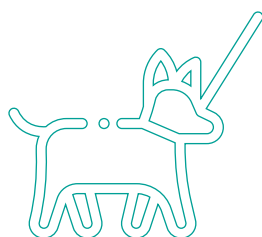


## SHARING STORIES

*Join one of our book clubs*

We've all been there – you've read a great book and can't wait to tell others or discuss it with someone who appreciates it as much as you. Joining or starting a book club is a great way to do this! If you're interested in joining a book club, we have groups that meet monthly at our libraries. If you have your own book club, we also have packs of ten books available for loan. For more information please contact Library Book Club Co-ordinators Rachel and Sarah on:

 **8405 6580**



**To help ensure everyone's safety and enjoyment this Summer please note these conditions for dogs on beaches in PAE:**

- **Between 10am and 8pm dogs must be on a chain, cord or leash at all times (not exceeding 2m in length)**
- **Between 8pm and 10am dogs must be under effective control by voice command and in close proximity to their owners at all times**

## MAKING OUR STREETS SAFER

*Managing local area traffic*

Local Area Traffic Management Plans (LATM) are one of the ways in which we are working to make local streets safer by better managing traffic. Since 2015 we have been working on delivering these improvements by consulting with nearby residents and developing draft schemes such as roundabouts, road humps, road narrowing or changes to footpaths and signage, relevant to the specific area. We then work alongside the community to further develop the traffic management scheme before we begin construction. We have completed LATM's in Kilburn, North Haven, Rosewater, Greenacres and Northfield, and are currently working in Enfield and Clearview. We will soon be undertaking LATM work in Devon Park, Dudley Park and Croydon Park areas.

To learn more about this work:

 [www.cityofpae.sa.gov.au](http://www.cityofpae.sa.gov.au)

## PAE PLACES GRANTS

*Making spaces into great places*

Individuals, groups or businesses can apply for one of our PAE Places Grants and then work in partnership with the council and others to improve places and locations. Hold an event to bring people together, create new art or beautify an area. We are open to all ideas so contact us for a chat so we can work together and provide support before your application is submitted. We are accepting and approving applications from now until 30 April 2020.

 [www.cityofpae.sa.gov.au/paeplaces](http://www.cityofpae.sa.gov.au/paeplaces)



## FESTIVE OPENING HOURS

*The new year is on the way*

The Festive Season is fast approaching and we wish all of our residents a happy and safe Christmas and New Year. The Civic Centre will operate normal business hours during the holiday period but will be closed on weekends and public holidays. Semaphore, Greenacres and Parks Library will be open but check our website or call for modified hours.

To report any emergencies during this period, please contact the relevant emergency authority. To make a non-urgent request for Council service, simply visit our website any time of the day or night. The benefit of logging a request online is that you are able to track the progress of your request.

**Normal operating hours will resume on Thursday 2 January 2020.**

## { PAE Past }

### 90 YEARS OF FUN

Semaphore's iconic carousel was built in Adelaide during 1927-1928. It was primarily built by Len Northey, a local man who worked at the Town Hall at Henley Beach as a silent film operator. Much of the carousel was made locally but the horses themselves were made by Bob Bartlett, in Melbourne, and the twisted brass poles came from England.

The carousel spent the first ten years of its working life at Henley Beach as part of the seaside amusements there. In 1936, the carousel did a stint at Jubilee Oval for the Centenary of South Australia Expo. After this Expo Len Northey was considering returning the ride to Henley Beach, however the Henley Council wanted to increase the rent by one shilling a year. Unwilling to pay this increase, the carousel moved to Semaphore Foreshore in 1938. At the time it was built, it was one of the first electric powered rides of its type. Today, the carousel is one of the last

remaining seaside amusements in our state.

It is also believed to be the largest operating carousel in the country, initially holding 40 rather than the usual 36 horses. In 2015 four horses were removed to allow wheelchair access to the carousel and now wheelchair users, people with significant disability and their supporters ride free.

Operated by the Rotary Club of Henley Beach, the carousel inspires joy and excitement and it continues to be enjoyed by adults and children alike during the Summer season.

## SUMMER EVENTS

We're bringing you a great range of exciting events - it's on in PAE! Further information about these events is available online, and we regularly update each event listing:

 [www.cityofpae.sa.gov.au/whatson](http://www.cityofpae.sa.gov.au/whatson)



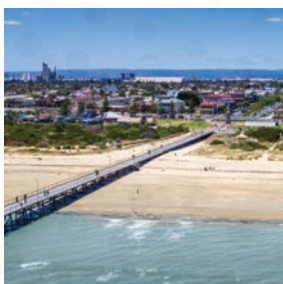
### Tues 31 Dec New Year's Eve

Head to Semaphore Foreshore for our annual New Year's Eve fireworks display, roving entertainment and a carnival atmosphere. Sit on the beach and watch the fireworks display with the kids at 9.30pm, or see the New Year in and watch them at midnight!



### Fri 17 Jan, Sat 8 Feb, Fri 21 Feb Outdoor Cinema Program

The outdoor cinema returns to Klemzig Reserve (17 Jan and 21 Feb) and Stockade Park (8 Feb) this summer. Come along to our free outdoor movie screenings against the scenic backdrop of these beautiful local reserves. The movies are free events and offer something for all the family. Bring your bean bags and rugs, grab a bite to eat from the food trucks and enjoy an entertaining evening from 6pm, with live entertainment before each movie screens after sunset.



### Sun 26 Jan Survival Day

A free event on Semaphore Foreshore with traditional dance performances, children's activities and market stalls. This event is presented by Tandanya in partnership with PAE and celebrates the resilience, vibrancy and diversity of Aboriginal and Torres Strait islander community and culture. It is a tangible show of the City of PAE's commitment to reconciliation.



### Sun 26 Jan Australia Day

Celebrations on Semaphore Foreshore with fireworks from 9.30pm. The National Kiteboarding Freestyle Titles will also be happening at Semaphore over this long weekend.

## OTHER EVENTS

From Northfield to North Haven, Gepps Cross to Glanville and Enfield to Ethelton, there's plenty of unique and local events in PAE. For a full list of all events, times and details visit:

 [www.cityofpae.sa.gov.au/whatson](http://www.cityofpae.sa.gov.au/whatson)

### Fri 6 - Sun 8 Dec POSH Arts and Design Fair

Experience an arts fair that will transform Hart's Mill, Port Adelaide. Australian artists, designers and makers will exhibit their latest collections and beautifully handmade products. Program includes panel discussions, workshops, live art, a bar, food trucks and live music.



### Sat 7 Dec - Fri 31 Jan Semaphore Summer Carnival

Amusement rides, games and activities on the Semaphore Foreshore over the summer school holidays. Closed Christmas Day.

### Fri 13, 20 Dec and 3, 10, 24 Jan Semaphore Twilight Markets

A family-orientated market along Semaphore Foreshore reserve with plenty of stalls and live music. Stalls include handmade arts and crafts, vintage fashion, interesting and unique curios, world cuisine and coffee.

### Sun 15 Dec Carols Alive

This community event is organised by CityReach Baptist Church for the families of Northgate, Oakden, Lightsview and the wider community. The program includes amusements, rides, a petting farm, food, entertainment, community carol singing, nativity play and fireworks.

**Civic Centre**  
163 St Vincent St,  
Port Adelaide

t: 8405 6600  
w: [www.cityofpae.sa.gov.au](http://www.cityofpae.sa.gov.au)  
e: [service@cityofpae.sa.gov.au](mailto:service@cityofpae.sa.gov.au)

**Town Hall**  
34 Nile St, Port Adelaide

**Visitor Information Centre**  
66 Commercial Rd, Port Adelaide  
t: 8405 6560

**Enfield Library Council Office**  
1 Kensington Cres, Enfield  
t: 8405 6530

**Greenacres Library Council Office**  
2 Fosters Rd, Greenacres  
t: 8405 6540

**Parks Library**  
46 Trafford St, Angle Park  
t: 8405 6550

**Port Adelaide Library**  
2 Church St, Port Adelaide  
t: 8405 6580



**Sun 15 Dec**

### Seaside Carols at Semaphore

This free event is a night of entertainment offered by local businesses, local artists and supporting community groups. Enjoy amusement rides, fireworks, Santa, carols, food trucks and markets.

**Sun 15 Dec**

### Carols by the Marina

A free family event to celebrate Christmas - commemorating 25 years of this prestigious event. On offer are carols, entertainment, children's activities and a visit from Santa.



**Sat 18 - Sun 19 Jan**

### Delphi Bank Semaphore Greek Festival

Experience Greek culture, music, dancing and food in a family-friendly event on Semaphore Foreshore. Live music and traditional Greek dancing by local dance groups on both days on main stage.



**Fri 7 Feb**

### Laneway Festival

A live music experience like no other, the 2020 Laneway Festival brings summer's best line-up of local and international acts to Hart's Mill, Port Adelaide.

**Sat 22 Feb**

### Dolphin Dreaming Festival

The Dolphin Dreaming Festival is a reconciliation event held on Semaphore Foreshore. It is a celebration of our ocean, rivers and the life of the dolphins. This family festival has activities for people of all ages and live music throughout the day.



## SUMMER SCHOOL HOLIDAYS

*Keep the kids entertained this summer*

### Library Program

Our five libraries bring a full program of activities for families this summer. Kids can create with Lego, make a bird feeder, join in Code Camp or build a hovercraft. Program details are available online and bookings are essential for most sessions.

### Activities at Lefevre

If you're looking for something fun pre-Christmas, the Community Stadium will provide art and craft activities, roller skating and sports on Tuesday 17, Wednesday 18 and Thursday 19 December. In the new year, there will be roller skating on Wednesday 8 January and a basketball clinic on Thursday 23 January.

### January Skate League

Bring your skateboards, scooters and bikes and join in competitions and events for all levels at Osborne Skate Park on Saturday 18 January.

### Family Fun Days

Pop down to Kilburn Community Centre on Wednesday 15 and 22 January for free activities for 5 to 12 year olds. There's roller skating (skates provided but bring socks), face painting and giant games. Parents and carers are required to participate and support their children, and to help set up and pack up. The 'Experience Café' will be open with food and drinks to buy and the computer room will be open too, with free Wi-Fi.

### Broadway Bootcamp

A two-week program for theatre loving kids aged 5 to 18 will be held in January at the Parks Theatre. Here your kids can build confidence, make new friends and learn what it is like to work as part of a fantastic team, all while having a great time on the stage. No experience or audition is required.

✉ [theatre@ymca.org.au](mailto:theatre@ymca.org.au)

☎ 8406 2951

**We're getting ready to welcome the New Year... and a new decade!**  
**If your New Year's resolution is to increase your skill set, find a job, pick up a new hobby, meet new people or get fit and healthy, there are many programs and activities offered by our libraries and Communities Centres. We'll even be trialling some brand new groups and activities in early 2020. Information about what's available at our libraries at Enfield, Greenacres, Parks, Port Adelaide and Semaphore, and our Community Centres and Stadiums at Enfield, Kilburn, Lefevre and the Lights is available on our website.**

### Semaphore Library

14 Semaphore Rd, Semaphore  
t: 8405 6540

### Enfield Community Centre

540 Regency Rd, Enfield  
t: 8405 6556

### Kilburn Community Centre

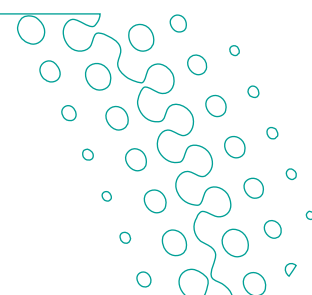
59 Gladstone Ave, Kilburn  
t: 8405 6730

### Lefevre Community Stadium

541 Victoria Rd, Osborne  
t: 8405 6908

### The Lights Community & Sports Centre

Corner East Parkway and  
Hampstead Rd, Lightview  
t: 8405 6670





# Strolling on Largs Bay Jetty

Best Selfie Spot #12

Discover a great waterfront city with world-class maritime, railway and aviation museums, a state heritage area, dolphins, kayak tours, or hire a bike and explore the beaches at Semaphore and Largs Bay.

Visit **PORT  
ADELAIDE  
& COAST**



CITY OF  
Port Adelaide Enfield