

## KBAN: *Working Together*

Kilburn and Blair Athol Network

### About 'KBAN: *Working Together*'

**Objectives:** opportunity for local services and groups to keep each other informed, meeting quarterly (or as needed). To network and work together as appropriate. For service providers based in Kilburn and Blair Athol.

#### ***Aim of meetings to discuss:***

- ⇒ Safety and Social Issues,
- ⇒ Community Projects - eg the Housing Developments and Prospect Rd Upgrade, and
- ⇒ Community Collaboration and Cohesion - creative opportunities.

**Target:** services and agencies working within Kilburn and Blair Athol or have a direct impact on the residents.

**Contact:** [christine.loveday@cityofpae.sa.gov.au](mailto:christine.loveday@cityofpae.sa.gov.au). Christine is the Community Development Officer for Kilburn and Blair Athol based at the Kilburn Community Centre.

*We have taken care to provide this booklet with as much up-to-date information as possible. Please let us know if we need to change, alter or even add something.*

*May you enjoy living and visiting Kilburn and Blair Athol, South Australia 5084.*

Your guide to...

## KBAN: *Working Together*

Kilburn and Blair Athol Network

# I live in Kilburn and Blair Athol,

♦ *who can I ask?*

♦ *where can I go for ...?*

This booklet has been written to help inform and guide people living in Kilburn and Blair Athol.

This is not all, there is more! This is an introduction, enjoy exploring the area and see what it has to offer.



### Kilburn and Blair Athol is on Kaurna land.

We acknowledge the Kaurna people as the custodians of the lands and waters of the Adelaide region, on which are situated. We pay respect to elders both past and present.

We acknowledge and respect the Kaurna people's cultural, spiritual, physical and emotional connection with their land, waters and community.

To learn more please go to: <https://www.cityofpae.sa.gov.au/community/aboriginal-and-torres-strait-islanders/explore-first-nations-culture>.



## INDEX

Page 3: *Local Services*

Page 4: *Children's Services and Volunteering*

Page 5: *Food Support*

Page 6: *English Classes*

Page 6: *Hiring a Hall*

Page 7: *Support: Legal, Loans, Employment*

Page 8: *Advice for People in Domestic Family Violence*

Page 10: *About Kilburn and Blair Athol*

Page 11: *Kilburn Neighbourhood Watch*

Page 12: *Map of Services and Places*

Page 14: *Sport, Local Parks and Green Spaces*

Page 16: *About KBAN: Working Together*





## SPORT, LOCAL PARKS AND GREEN SPACES ★

### One Culture Support Services:

One Culture Support Services engages young people of all cultures and abilities through inclusive NDIS: sport programs, events, individual and school leavers employment supports, and community connections.

Corner of Lily/Lionel Ave, Blair Athol.

[www.oneculturesupportservices.org](http://www.oneculturesupportservices.org),

Contact: E; [info@oneculturegroup.org](mailto:info@oneculturegroup.org) T; 7080 3894

Their sports program includes ...

- ⇒ **One Culture Football.** For young people from new arrival, migrant and first nations backgrounds. Free, twice a week during school terms.  
Contact: T; 0435 255 228 E; [info@oneculturefootball.org](mailto:info@oneculturefootball.org)
- ⇒ **Blair Athol Racquet Sports Hub.** Racquet sports with pickleball, tennis and table tennis.  
Contact: [www.barsh.org](http://www.barsh.org), T; 0402 438 126 E; [info@barsh.org](mailto:info@barsh.org)

**Kilburn Football & Cricket Club.** Corner of Lily/Lionel Ave, Blair Athol  
Secretary: [daninic04@yahoo.com.au](mailto:daninic04@yahoo.com.au) Juniors: [parkschad@gmail.com](mailto:parkschad@gmail.com)

**Peace & Welcome Community Garden.** 47 Le Hunte St, Kilburn

**Peter McKay Reserve.** Playground, BBQ, picnic, area. basketball board, garden and public lighting. Gladstone Ave/LeHunte Street, Kilburn

**Jack Watkins Reserve and Dog Park.** 414 Churchill Rd, Kilburn. Gates close 6pm-6am. Winter times may differ.

**Dover Street Reserve.** Playground, nature play, sports courts, picnic areas and a large mural. 13 Anson St, Blair Athol

**Mapleton Reserve.** Basketball, BBQ, shelter, picnic area, playground. Leader and Talinga Avenues, Kilburn

**Blair Athol Reserve.** Lionel Ave., Blair Athol. BBQ, playground, shelter, toilets, sport facilities.

**Dingley Dell Reserve.** Athol Ave, Blair Athol. BBQ, playground, shelter, toilets, sport facilities.

**Rushworth Reserve.** Rushworth St. Blair Athol. Playground, sport facilities.

**Dover St Reserve.** Blair Athol.

**Jaffrey St Rose Gardens.** Blair Athol.


## Kilburn Community Centre (KCC)

59 Gladstone Avenue, Kilburn.

T: 8405 6730 E: [christine.loveday@cityofpae.sa.gov.au](mailto:christine.loveday@cityofpae.sa.gov.au)

KCC is a community place for learning, recreation, arts, crafts, hobbies, fellowship, outreach, support services and wellbeing. We also run special events - like School Holiday Fun Days. Other groups use our facilities too. An 'activity and event' booklet can be found on the City of Port Adelaide website.

We also have a volunteer available to help asylum seekers and refugee arrivals to fill out forms.  
Contact Denise. T: 0429 222 687.

 You can follow us on Facebook for up-to-date information on new and current activities



## Lutheran Care

309 Prospect Road Blair Athol, T 8269 9300.

Emergency Relief, Financial Counselling, Counselling, program activities.



## Vinnies Refugee and Asylum Seeker Service

43 Le Hunte Street, Kilburn SA 5084. T: 83403 053

Open 10-2 Tues, Wed, Thurs.

Free assistance for asylum seekers and refugees on Temporary Protection Visas (TPV) and Safe Haven Enterprise Visas (SHEV). Services include: material assistance (food, clothing, and payment of essential service bills); housing and immigration information; support for asylum seekers released from detention; advocacy; financial counselling and referrals to other support agencies; English language classes; vocational education funding and; pop-up health clinics.



## KBAN: Working Together

Kilburn and Blair Athol Network

### Blair Athol North B-6 School and Children's Centre

Marmion Avenue, Blair Athol

T: 8168 0700 or <https://banb7.sa.edu.au/childrens-centre/>

Offers preschool, occasional care, playgroups, family and community programs - supported by a range of education, health and community professionals - to support you, your family, and young children to achieve the best possible health and learning outcomes.



### St Brigid's Primary School: Community Hub

50 Le Hunte Street, Kilburn.

During school terms 9am-2:30pm, Monday-Friday.

Contact: Bonnie T: 0480 277 409 or [communityhub@stb.catholic.edu.au](mailto:communityhub@stb.catholic.edu.au)



Offers a range of programs for migrant and refugee parents and pre-school children in partnership with other local services. Services include; English classes; parenting workshops; playgroups; wellbeing programs; family support; women's fitness classes and more. The community hub is connected to the primary school, but open to anyone in the community.

### Playgroup @ St Paul

44 Audrey Avenue, Blair Athol

T: 0412 089 601

Tuesdays during school terms. 9-10:30am. \$2 per family.

All children up to school age are welcome to come along with a parent/caregiver/grandparent.



## BECOME A VOLUNTEER

Volunteering is a great way to connect with your local community to make friends, learn new skills, share your interests and become job ready. If you are interested in volunteering you could contact a local service or one of these ...

City of PAE. T: 8405 6871 [www.cityofpae.sa.gov.au](http://www.cityofpae.sa.gov.au)

Northern Volunteering. T: 8250 1582 [reception.nvsa@gmail.com](mailto:reception.nvsa@gmail.com)

Volunteering SA & NT. T: 8221 7177 <https://vsant.org.au/>

## KBAN: Working Together

Kilburn and Blair Athol Network

CITY OF PORT ADELAIDE (PAE)		SUPPORT SERVICES	
1	<b>Kilburn Community Centre.</b> 59 Gladstone Ave., Kilburn. A place for the community to meet, share and explore interests.	6	<b>Lutheran Care.</b> 309-311 Prospect Rd, Blair Athol
2	<b>Enfield Library.</b> 1 Kensington Crescent, Enfield. Library services - access to Council services.	13	<b>Vinnies Refugee &amp; Asylum Seeker Services.</b> 47 LeHunte St., Kilburn
SHOPPING		8	<b>Church of Christ.</b> 379 Prospect Rd, Blair Athol. Drop-in programs, pastoral care, friendship groups.
3	<b>Churchill Centre.</b> 400 Churchill Rd, Kilburn North	11	<b>C.a.F.E Enfield Children's Centre.</b> 17a Wilkins Street, Enfield. Programs include: care, preschool, family support and events.
4	<b>Regency Plaza Shopping Centre.</b> 269 Main North Rd, Sefton Park	1	<b>Neighborhood Watch SA..</b> Meets on the 2nd Monday of even numbered months, 7pm. 59 Gladstone Ave., Kilburn.
5	<b>Community Food SA.</b> Shop 5, 580 Main North Road Gepps Cross. A not-for-profit supermarket.	SCHOOLS AND KINDERGARTENS	
6	<b>Lutheran Community Care Op shop.</b> 307 Prospect Rd, Blair Athol	20	<b>Prospect Kindergarten.</b> 352 Regency Rd, Prospect
7	<b>Savers Recycle Super Store.</b> 252 Churchill Road, Kilburn	21	<b>St Bridget's Primary School.</b> 45 Way Street, Kilburn
8	<b>Church of Christ Op shop.</b> 379 Prospect Rd, Blair Athol	21	<b>St Bridget's Community Hub.</b> 50 LeHunte St., Kilburn
9	<b>Kilburn Post Office.</b> Passport Photos, Western Union-Money Transfers, Photocopies, Fax, Metro ticket Recharge, Gift Articles etc.	22	<b>Blair Athol North Primary School and Children's Centre</b> 5 Marmion Ave.
HEALTH SERVICES		23	<b>Roma Mitchell Secondary College.</b> Briens Road, Gepps Cross SA (opposite Lang Street)
10	<b>Prospect Road Day Night Clinic.</b> 347 Prospect Rd, Blair Athol	PET CARE	
11	<b>Immunisation Clinic.</b> 17a Wilkins St., Enfield. Child & Youth Health. Enter off Pateela St.	17	<b>Veterinary.</b> 318 Prospect Rd, Kilburn
12	<b>Uniting Communities-Health Access.</b> 332 Regency Rd, Prospect. Services: Families, Youth, Aged, Aboriginal, Disability, Mental health, Domestic violence, Alcohol, Drugs, LGBTIQ+, Financial & legal, Homelessness, Emergency.	18	<b>Dogs SA.</b> David Roche Park, 33 Cromwell Rd, Kilburn.
		19	<b>Pets Everywhere.</b> 432 Prospect Rd, Kilburn
PLACES OF INTEREST		PLACES OF INTEREST	
		24	<b>Bottle &amp; Can Recycling Centre.</b> 277 Churchill Rd, Prospect.
		25	<b>Miniature Steam Train Park.</b> 370 Regency Rd., Prospect. Train rides open to the public. Monthly 4th Sun 1.30-4.30pm. Closed in December.
		26	<b>'Cross' indoor play-centre.</b> 4/252 Churchill Rd, Kilburn.
		27	<b>Train Station</b>

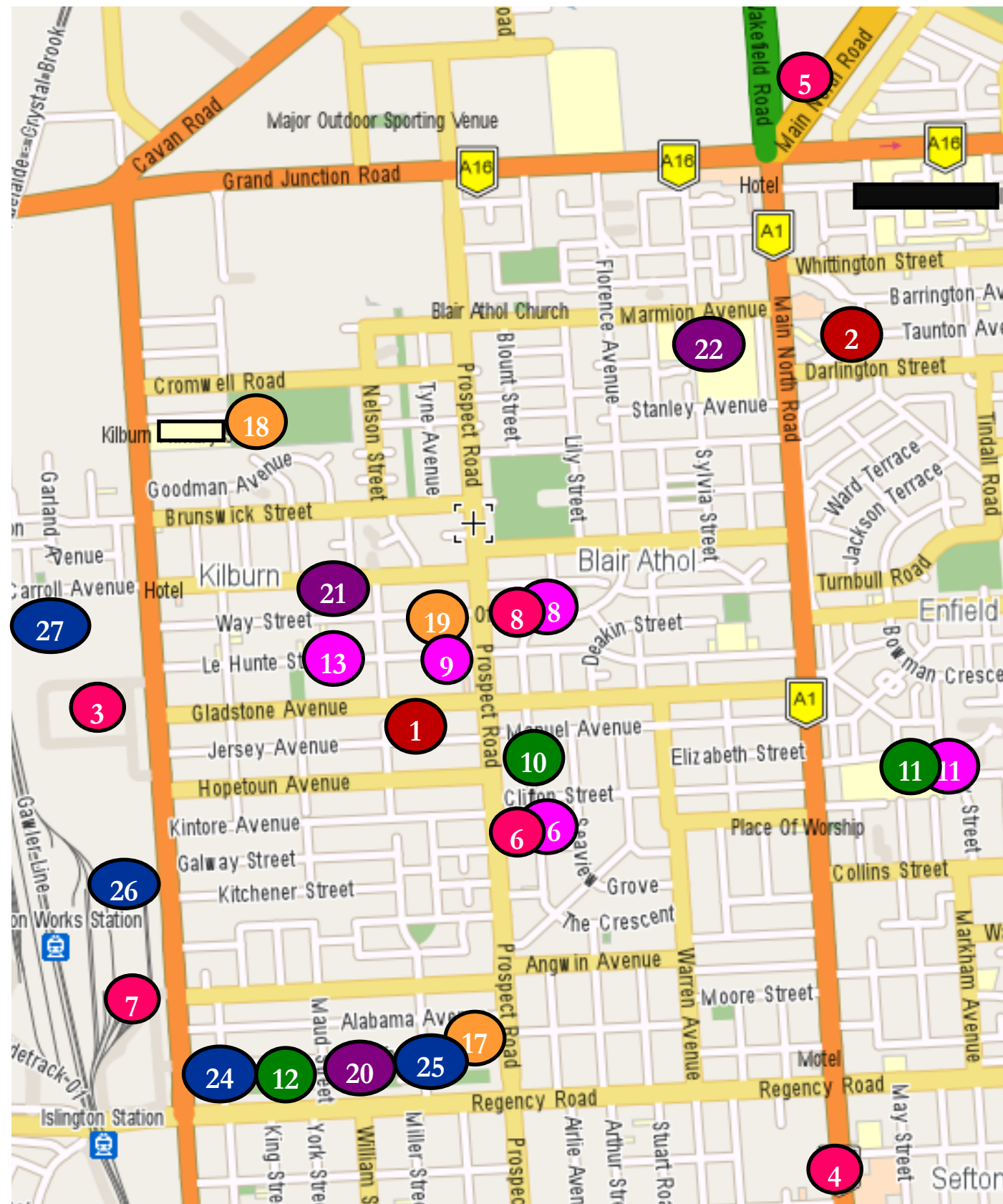


# KBAN: Working Together

Kilburn and Blair Athol Network

## MAP OF KILBURN AND BLAIR ATHOL SERVICES AND PLACES

23




## FOOD SUPPORT

### Faithworks

5 Clifton Street. Blair Athol  
Open weekdays from 10am

The Food Assist Centre is a welfare ministry that provides free food, cheap food and meals through their community supermarket and programs.

 You can see them on Facebook.



### Fred's Van

Held at the Kilburn Community Centre  
59 Gladstone Avenue.  
T: 8112 8720.

Run by St Vincent de Paul Society, volunteers provide a free meal to the community. No need to book.  
Thursdays 7pm.



### Church of Christ

Corner of 379 Prospect Road and  
Florence Avenue. Blair Athol. T:  
8548 9265

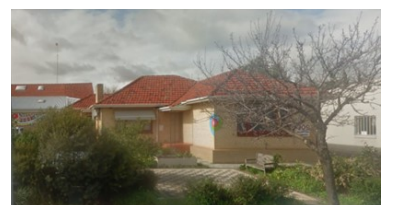
Provides food hampers to people in need. They also have an op shop on site.



### Lutheran Care

309 Prospect Road, Blair Athol, T 8269 9300

Lutheran Care provides access to food and essential items for local residents needing support. Same day appointments can be made by calling at 9am.



### ENGLISH CLASSES

#### Enfield Community Centre

540 Regency Road, Enfield SA 5085. T: 8405 6556

- ⇒ Friendly and welcoming groups to help build confidence and improve English for everyday communication.
- ⇒ Mondays 10am-12pm. Beginners class for those with a little English.
- ⇒ Fridays 10am-12pm. Advanced classes.

#### St Brigid's Community Hub

50 LeHunte Street Kilburn

Contact Bonnie. T: 0480 277 409 E: [bcreek@stb.catholic.edu.au](mailto:bcreek@stb.catholic.edu.au)

- ⇒ Thursdays 10-12pm during school terms.
- ⇒ Anyone is welcome.
- ⇒ Child-minding available.
- ⇒ English for the Citizenship Test: Tuesdays 1-2:30pm

#### Vinnies Refugee and Asylum Seeker Services

Classes held at the Kilburn Community Centre

59 Gladstone Avenue, Kilburn. T: 8340 3053

- ⇒ For people who arrived in Australia as refugees or asylum seekers – people with past or present refugee experiences.
- ⇒ Wednesdays 10-12pm during school terms.
- ⇒ Thursdays 10-12pm during school terms.
- ⇒ Bookings essential.

#### Austral-Asian Community Church

Classes held at the Kilburn Community Centre

59 Gladstone Avenue, Kilburn. T: 0403 865 013

- ⇒ English for the Australian Citizenship Test.
- ⇒ Thursdays 10:30am

### HALL HIRE

The City of Port Adelaide Enfield have halls for hire across the council area. For information go to their website or call customer service on 8405 6600. Community Centres are for regular and ongoing programs open to the community. They are not available for event or one-off hire.

### What's in a name?

#### Blair Athol:

Celtic for a plain cleared of trees, and takes its name from the home of the Magarey family.

#### Kilburn:

Originally known as Chicago or Little Chicago in the 1930s but this title was never officially recognised in the Land Titles Office. Kilburn is named after a suburb of London.

### POINTS OF INTEREST

**Weaving sculptures.** Prospect Rd Kilburn & Blair Athol. Colours and threads represent the multicultural community of the area.

**Tiles with local messages.** The footpath in front of shops on Prospect Road Kilburn. Local people were asked for comments.

**Art explosion at the Kilburn Community Centre.** Check out the art inside and outside. Street art, wall murals, mosaics, quilts, paintings, sculptures, its all there. To see a booklet about the art go to the KCC page on the City of Port Adelaide Enfield website.

**Painted Stobie Poles.** Artists Doris Unger, Frey Micklethwait, Ivan and Caroline Rehorek created way-finding artworks to highlight local parks: Barton Street, Jack Watkins, Greenacres reserves and Stockade Botanical Park.

### KILBURN NEIGHBOURHOOD WATCH

- ♦ People living in Kilburn are invited to attend meetings to discuss safety issues, meet other local residents and meet with police representatives.
- ♦ Contact Area Coordinator Cr Carol Martin on T: 0417 828 195
- ♦ Meets at the Kilburn Community Centre every two months



### Take a historical walk down Kintore Avenue, Kilburn

Kay is a long term resident of Kilburn and a volunteer at the Kilburn Community Centre. She has an amazing and interesting memory of the area – having grown up here. Here are some of her memories of Kintore Avenue (with a few comments thrown in by others with connections too).

*Take a walk down the street and see houses built from many different decades. A number of houses were made of corrugated iron earning the area a nick name by some as 'Tin City'. The street was peppered with corner shops and roses. Buses used to go down the street servicing 5 bus stops. If you start at Kay's house # 44 (at Christmas time it is alive with Christmas lights) walk towards Churchill Road and look out for:*

An original corrugated iron house that has been beautifully maintained. An old corner shop that used to be Barnes' Chemist Shop. When the shop moved to the end of the road on the corner of Prospect Road, the Thompsons turned it in to a Dry Cleaning Store. Across the road and down a little, was another Corner Shop. The first window was Harris's General Store. Next to it was Button's Hair Dressers and then the Greengrocers - who lived in the side house. The Norfolk Pine trees in the area may indicate the first houses to be built in the streets of Kilburn but Kay is not certain about this. Check out the roses. A bit further was Higgin's Grocery Store. The entrance was on the corner of Brooklyn Tce. Down the terrace inside the shop was the post office run by Mrs Tume. Further on again you will find the old Haberdashery shop which later became Thurmer's motorbike shop. Ah, the roses. More corrugated iron houses. The houses at the end of the Kintore Ave, although facing Kintore Ave are actually on Churchill Road. The flats on the southern corner used to be a petrol station/garage. At the back of the garage that was a corrugated iron house that was used as a hall for the Methodist Sunday School that Kay attended while their church was being built in Clifton Street, Blair Athol.

*Towards Prospect Rd (from Kay's house)*

A number of homes that started out as a corrugated iron houses. A house built in 1956 with Mount Gambier Stone. A house that used to be a 'sand and metal' selling business. Ah, roses. A large corner block used to be a horse stable. There even used to be a Jewellery store and the sign and shop windows are still intact. People would come from afar to buy and have specialty jewellery made "J. Thurnwald PTY LTD Manufacturing Jewellers and Expert Watchmakers"



### SUPPORT

#### Free Legal Advice Clinic



Outreach office at the Kilburn Community Centre.  
Contact the head office for appointments. T: 8202 5960

- ⇒ Provided by Lawyers from the Uniting Communities Law Centre
- ⇒ The first Tuesday of each month
- ⇒ Free telephone interpreters
- ⇒ Consumer Credit, Centrelink, Disability Advocacy (NDIS access & appeals) Elder Abuse, Youth & Family Law & Child Support as well as 'generalist' services which provides civil & criminal legal advice and representation

#### No Interest Loans (NILs)



For essentials you need now. No Fees. No interest. Ever.  
Just Pay back what you borrow ...

- Household items (eg fridge or washing machine), car repairs, furniture, medical and dental, housing and education.
- Essential vehicles—including mobility scooters.

Referrals to local services, financial advice/counselling.

Contact 'Good money', T: 1300 770 550 or check out [goodmoney.com.au](http://goodmoney.com.au).

#### Red Cross: Employment Hub



Outreach office at the Kilburn Community Centre.  
Contact Hamidi. T: 0437 587 610

- Wednesdays
- Free assistance with cover letters, resumes, interview practice and employment mentoring.
- For people of refugee, asylum seeker backgrounds and newly arrived migrants.

#### Women's Legal Service SA



A free legal service for women. Information, referrals and limited assistance. They offer outreach at various locations and assistance by telephone where necessary. For urgent immigration assistance ask to speak to the Temporary Visa Holders Program team who can assist with specific immigration matters where the client is experiencing violence. Contact T: 8231 8929, [admin@wlssa.org.au](mailto:admin@wlssa.org.au), [www.WLSSA.org.au](http://www.WLSSA.org.au)

## ADVICE FOR PEOPLE IN FAMILY DOMESTIC VIOLENCE SITUATIONS

In Australia domestic and family violence and sexual assault are crimes. They are illegal and victims have rights. The National Family & Domestic Violence Services – South Australia (SA) and the 'National Plan to Reduce Violence against Women and their Children 2010-2022' aims to stop this. There is an information and action pack available which has been translated into 46 languages. More information on the National Plan can be found on the National Plan website: <https://plan4womenssafety.dss.gov.au/>



### Domestic and family violence and your visa

Domestic and family violence is a crime in Australia and is not acceptable under any circumstance. We do not encourage visa holders to remain in an abusive relationship for a visa outcome under any circumstance. Visa holders will not have their visa cancelled if their relationship breaks down because of domestic and family violence. Only the Minister or a delegated officer (The Department) has the power to refuse or cancel a person's visa. A perpetrator of domestic and family violence cannot cancel a person's visa. A perpetrator of domestic and family violence may have their visa refused or cancelled. You can check your visa status online through Visa Entitlement Verification Online. This will show you what visa you hold, when it expires and any conditions attached to it.

*For more information, see:*  
[immi.homeaffairs.gov.au/visas/domestic-family-violence-and-your-visa](https://immi.homeaffairs.gov.au/visas/domestic-family-violence-and-your-visa)

### 1800 RESPECT. A helpline for anyone wanting advice or to talk.

When you phone 1800 RESPECT, you will talk to a trained counsellor who will listen and support you in what feels right for you and your situation. They will work to help identify what you can do and find the right services or support for you. 1800 RESPECT is available 24 hours a day, seven days a week.

T: 1800 737 732.

## Red Cross: Family and Domestic Violence Financial Assistance Program



**Is the program able to support me?** The program can support people who are: not Australian citizens or Permanent Residents, and experiencing or at risk of family and domestic violence, and experiencing financial hardship.

**What sort of support can I get?** Support offered could include: financial assistance, referrals to other organisations, casework support (up to 3 months).

**To help us make a payment, you will be asked to provide:** Visa status such as your passport number or ImmiCard number. If you are uncertain or do not currently hold a visa, you are still able to apply, and Red Cross will call you to discuss your situation. Bank documents such as a bank statement. If you do not have a bank account in your name that is safe for you to access, you are still able to apply.

**Will my personal information be safe?** Red Cross does not share your personal or visa information with the government. The contact you make with Red Cross is confidential. We keep the information you provide with your application safe at all times. Please do not send any documents with your personal information via email.

**I need help to apply.** If you need an interpreter to help you, contact the TIS on 131 450, state your preferred language and ask to be connected to Red Cross, 1800 733 276. If you need help to make an application and do not have anyone that can help you. Contact Red Cross on 1800 733 276, or email [nat\\_fdv\\_pilot@redcross.org.au](mailto:nat_fdv_pilot@redcross.org.au). For more information go to [www.redcross.org.au/familyviolencerelief](https://www.redcross.org.au/familyviolencerelief)

## MEN'S REFERRAL SERVICE. T: 1300 766 491

Who can the Men's Referral Service support?

Men who have or are still behaving abusively; Family members who are impacted by a man's use of abusive behaviours; Friends, family or colleagues of people who may be using or experiencing family violence—and wish to understand how to support their friends, family, or colleagues.

When you call you can remain anonymous; We will listen to you and treat you with respect; We will do our best to help you; We will provide you with referrals to local services that will help you take the next steps.