

PAE today

Where Everyone Belongs

Join the **fun** at The Lights

Page 4

Be a Tourist in your

Own Town

Page 6



Join our Winter
Adventure Hunt
and **WIN!**

YITPI
YARTAPUULTIKU

THE SOUL OF
PORT ADELAIDE

Update on
Page 8

The City of PAE acknowledges and pays respect to the traditional custodians of the land on which we stand, the Kaurna people of the Adelaide Plains and pays respect to Elders past, present and emerging. We recognise and respect their cultural heritage, beliefs and relationships with the land. We acknowledge that they are of continuing importance to the Kaurna people living today.



Mayor Claire Boan

It's that time of year when we lay out our strategic direction and major initiatives for the next 12 months in our Annual Business Plan. It has been developed through the feedback we received from you, the PAE community. I invite you to visit our website to take a look at the plan, which will be formally indorsed by Council at the end of June. You'll also find lots of other consultations on our newly revamped consultation hub, participate.cityofpae.sa.gov.au, plus ongoing updates on how our Dogs on Beaches Working Group is progressing.

As a Council, we are committed to upgrading local reserves and playgrounds. We are currently discussing several playgrounds around the City with our community. Recently, we opened the new Croydon Reserve, which

includes soccer pitches and a grandstand. We have also just installed an incredible seven-metre-tall playground sculpture just down the road at the new Polonia Reserve. This was designed and built by a local business alongside Council staff. You can learn more about both of these projects in this edition of PAE Today.

Even though the summer season has passed, events of all sizes continue throughout the City. One of my favourites is SALA, which showcases South Australia's Living Artists through exhibitions, shows and other events throughout PAE and greater Adelaide. Check out the back page of this edition to see what's coming up over the next few months, and make sure to follow the City of PAE on social media for the latest news and events.

As winter approaches, I encourage you to continue to check in on your friends and neighbours and see how they're doing. I'm a firm believer in the power of positive community connections. Our Council-run community programs and support services echo this, providing a sense of belonging, purpose and fulfilment. If you would like to know more, please give us a call for a chat.

Thank you for your continued support and involvement in shaping our community's future.

C Boan



WIN A \$50 VOUCHER!

Join our adventure hunt

Give yourself the chance to win a \$50 voucher to spend in your local area by joining our adventure hunt. A wintry snowflake is hidden throughout this edition of PAE Today. How many snowflakes can you find? To enter, simply scan the QR code, let us know how many you spotted and provide us with your contact details. The lucky winner will be drawn from the correct entries. Don't miss your chance to win!

For more information, scan the QR code or call [8405 6600](tel:84056600).

Submissions close 5pm Friday 7 July 2023. Winner drawn Monday 10 July 2023.



Get to know your Elected Members

Northfield Ward

Councillor
**Mark
Basham**



Where were you born?
Adelaide, but I spent much of my childhood in Melbourne.

Which suburb do you live in?
Currently, I live in Northfield. But I've lived in PAE for over 30 years — in six different suburbs.

What local matters are you passionate about?
Everything in our local community is important to me, but I am particularly engaged with planning, providing better infrastructure and green spaces, keeping our community safe, addressing traffic issues and recycling.

What is your favourite dad joke?
Knock knock.
Who's there?
Doctor.
Doctor Who?
Yes, him and the Daleks.

Councillor
**Lazaras
Panayiotou**



Where were you born?
I was born here in SA in Campbelltown.

Which suburb do you live in?
I live in Oakden, with my partner Ann as well as my parents. But Ann and I have plans to move to Lightview, ideally by the end of 2023.

What's the best piece of advice you have been given?
I'd say the best advice I've been given is to allow yourself to debrief after any significant milestone, good or bad.

What are your favourite things to do in your ward?
Living right off the Roy Amer Reserve is great for my mental health. I usually catch the O-Bahn into the city for work, so walking through the park before and afterwards really allows me to enjoy being in nature while also having the conveniences that come with living in a suburb.

Councillor
**Matt
Osborn**



Where were you born?
I was born in Modbury Hospital. Thank you for not asking me when I was born!

Which suburb do you live in?
I live in Oakden with my wife Angela and our son Edward. We're delighted that a baby will be joining us in June.

Which local groups are you involved with?
I am currently the Chair of the North East Community House, an ex-officio member of the Northgate Oakden Residents Association, and I am both a player and member of the Greenacres Football Club.

What is your favourite dad joke?
A man walks into a pet store and asks for a dozen bees. The clerk carefully counts 13 bees out onto the counter.
'That's one too many!' says the customer.
The clerk replies 'It's a free-bee!'

Elected Member Contact Details

At the City of PAE we have a Mayor and 17 Elected Members. They are your local community representatives and you can contact them if you have any concerns, ideas or issues you would like to discuss. Give us a call on [8405 6600](tel:84056600) to ask about your local Elected Members, or find their contact details at cityofpae.sa.gov.au

PAE Today is an official publication of the City of PAE and is produced four times a year. It is delivered in PAE to most residential properties via letterbox distributors and to businesses by Australia Post. Copies of each edition are also available from our Libraries and community centres, and online at www.cityofpae.sa.gov.au/connect/media-hub/pae-today. Please contact us if you require assistance to access a copy. Suggestions for articles can be submitted to communications@cityofpae.sa.gov.au. **Disclaimer** While every effort is made to report community information fairly and accurately, the City of PAE accepts no responsibility for any errors or omissions which may occur. The views of the contributors are not necessarily shared by the City of PAE. **Cover Photo** Players from Woodville West and Sturt face off in the Novita SANFL Wheelchair Football League

Would you like to
receive regular
PAE news updates?
Scan the QR code to
get started.



THE LIGHTS COMMUNITY AND SPORTS CENTRE

AN INCLUSIVE COMMUNITY

The Lights Community and Sports Centre is a vibrant place where people can connect, learn and participate in activities that improve their physical and mental wellbeing. We focus on creating a safe, welcoming and positive environment for people of all ages, including people living with disability. At The Lights, anyone can get moving and be involved in a variety of fun and engaging activities.

ACTIVE WELLBEING CLASSES

Prioritise your wellbeing — diverse activities for people of all ages

No matter what your age, if physical fitness is your main concern, there are many classes to choose from, including yoga, Pilates Flow and Zumba, as well as our Strength for Life programs and the Walking Netball group. Active wellbeing is about more than physical fitness, though. At our Books and Banter sessions, keen readers can meet to have a friendly chat about the books they are reading or to give each other their latest reading recommendations. Meanwhile, community members can join our Delightful Conversations group at the Delightful Café to chat with others and share their ideas, thoughts and feelings. We also offer Living Well @ the Lights, a series of workshops aimed at helping people build their wellbeing by creating opportunities to connect, learn, be active, take notice, give back, eat well and sleep well.



SHINE BRIGHT

Fun and inclusive activities

Through our Shine Bright @ The Lights group, we are taking inclusivity to the next level. This group offers enhanced health, fitness and wellbeing opportunities for people with disability. The Lights also supports other activities for people with disability, such as inclusive futsal, basketball, wheelchair footy and the exhilarating sport of powerchair football. With such a wide range of programs and activities, there's truly something for all — so get ready to join the fun!



INDIVIDUALISED SUPPORT

Strategies to improve your physical health and wellbeing

If you are looking for a more tailored form of assistance to achieve optimum health and wellbeing, you may prefer to explore the options below.

Connect @ The Lights

Our Connect @ The Lights program can provide you with six or more free one-on-one consultations. These consultations will help you to establish strategies to support and improve your physical health and wellbeing so that you stay well and feel connected in your community. To book a consultation, see our contact details below.

Pushing Performance

Our personal trainers from Pushing Performance are passionate about supporting and motivating clients to change their lives, overcome barriers and achieve greatness in whatever way they choose.



ACTIVE KIDS PROGRAM

Fostering healthy habits for kids

We offer a range of fun and engaging activities to help children stay fit, healthy and happy. Our Active Story Time program encourages children to develop their reading skills and imagination, while our active playgroups provide them with opportunities for physical activity and social interaction.

Sports programs such as badminton and basketball not only improve your children's physical fitness, but also teach teamwork, discipline and good sports conduct. All our Active Kids Programs offer a safe and supportive environment for children to learn new skills, make friends and explore their interests. By participating, kids can also develop a love for physical activity that can last a lifetime — enabling them to enjoy the numerous lifelong benefits that come with an active lifestyle.



YOUTH GROUP

Where your voice matters

For young people aged between 12–17, our Youth Group offers the opportunity to meet new friends, forge unforgettable memories and have a say in what goes down at The Lights. That's right — you have a voice, and we want to hear it! Youth Group at The Lights involves:

- Monthly catch ups
- Awesome activities
- Music and snacks
- A place to hang out
- Being a part of creating an awesome young community
- Making a difference
- Having your say on what you want to see at The Lights



BEFORE YOU GO...

Delightful snacks on offer

After your fitness class, coaching session or group activity, why not refresh with a coffee and snacks at the Delightful Café?

Whatever your need and whatever your passion, we'd love to see you at The Lights. Come along and find out more about the services we offer.



**Come along and see
everything the centre
has to offer!**

The Lights Community and Sports Centre

244-270 East Parkway, Lightsvue (corner Hampstead Road and East Parkway)

☎ 8405 6670 🌐 thelights.com.au 📧 thelights@cityofpae.sa.gov.au

THINGS TO DO THIS WINTER

The rainy season may be upon us, but there are still plenty of options for getting out and about in PAE. Be a tourist in your own City and discover our unique natural environment, fascinating historic attractions, creative places and welcoming community centres and Libraries.



SALA

We are excited to announce that the South Australian Living Artists (SALA) Festival is back this August, showcasing the exceptional talent of living artists from our community. The festival is now a highly anticipated annual event, drawing visitors from far and wide to discover and celebrate the creative works of our local artists. We encourage everyone to show their support by visiting exhibitions, participating in tours and engaging in workshops. There are many events, art forms and styles to explore throughout PAE, including traditional and contemporary art, painting and sculpture — and everything in between. We hope to see you there.

For more information, visit the official SALA Festival website at salafestival.com or check out our Arts and Culture website:

cityofpae.sa.gov.au/explore/arts-and-culture/sala



VISIT PORT ADELAIDE APP

If you prefer to go your own way, download our Visit Port Adelaide app, where you will find several different self-guided walks on specific themes and topics. Options include Walk the Port, Art Deco and Modernist Port Adelaide, Wonderwalls, Heritage Plaques and a Ghosts of the Port ghost hunting tour with augmented reality. You can also use the app to help you find other local attractions, as well as places to eat and drink in the area. It's free and available for download in the Apple or Play Stores. Just search:

Visit Port Adelaide



GUIDED PORT WALKS

The Port Adelaide State Heritage Area is one of only 17 State Heritage Areas in South Australia, so why not get out and about on a guided walk around historic Port Adelaide? During the walk, our passionate local volunteers will take you back to the mid-1800s to learn what life was like for the early settlers — and how it came to be that Port Adelaide was dubbed 'Port Misery'. Gold coin donation on the day. To book online, visit eventbrite.com.au and search:

Guided Port Walks



ON YOUR BIKE!

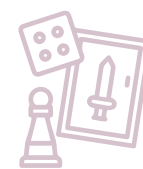
Another way to explore the Port and Coast is by bike. For an easy ride, pedal along the Waterfront Loop Path — or tackle something more challenging and ride the Coast Park path, a 70km sectioned pedestrian and bicycle path along the Adelaide coastline. The Coast Park starts at North Haven and goes right through to Sellicks Beach. Benches, toilets and picnic areas are dotted along the trail, allowing you to rest and enjoy the stunning sea views along the way. Ride your own bike or arrange free bike hire through our Visitor Information Centre. You need to be 18+ to hire a bike, but children can also hire a bike if an adult accompanies them. Please bring photo ID and be ready to provide a mobile phone number.

BEER, BANTER AND BOOKS

If you love whiling away your winter evenings reading a good book, now might be the time to join a book club. Our Libraries facilitate a Books and Banter book club every first Tuesday of the month as well as a Beer and Book Club every first Thursday of the month. Book lovers, beer enthusiasts and friendly faces meet in a relaxed and casual atmosphere to chat about books, life and more. Book clubs are free to join and open to all members of the community. Contact your local Library to find out more.

FIRSTIVAL

If you have never visited one of our Libraries, make it your mission to pay your first visit during Firstival in July. Through Firstival, South Australia's public libraries are encouraging everyone to explore all that libraries have to offer. Check out the collection or join in with one of our regular groups or classes. Children and young families can discover Anime Club or Dungeons and Dragons, or get hands-on with some science experiments with Gen Green. Meanwhile, why not join us for TechFest, a tech-based event at the Parks Library where there will be opportunities to try your hand at coding, virtual reality (VR), augmented reality (AR), eSports/gaming and interactive projection, as well as guest speakers throughout the day. TechFest is on Saturday 1 July from 10am–4pm.



Game Lovers Over 50

Introducing the brand-new Games Club for individuals over 50 in PAE! For more information call [8405 6804](tel:84056804)

COME AND SEE US AT THE VISITOR INFORMATION CENTRE

At our Visitor Information Centre (66 Commercial Road, Port Adelaide), our friendly staff and volunteers can tell you what there is to see and do in Port Adelaide and its surrounds. They can also provide you with maps and information about local attractions. Located in a heritage-listed building dating back to 1860, the centre is worth a visit in its own right. It originally housed the customs, courts, police station and cells. The original gaol cells are still open for visitors to explore. There is also a permanent exhibition in the centre, dedicated to the fascinating world of the area's wild dolphins and their natural environment, which includes the Port River. Another gallery space in the centre features a changing exhibition by local artists each month. The centre is open every day of the year except Christmas Day. For exhibition updates and to learn more about what's happening, find the Port Adelaide Visitor Information Centre on Facebook.

Programs and Activities Guide 2023



PROGRAMS AND ACTIVITIES GUIDE 2023

Get ready to explore a world of fun and excitement with our Programs and Activities Guide 2023

The guide has everything you need to know about regular activities happening in your local community, including Libraries, community centres, community halls and stadiums. With a diverse range of activities, from book clubs and movie nights to craft workshops and fitness classes, there is something for everyone to enjoy. What's even better is that most of these activities are free. Simply check out the guide and discover what exciting activities are happening near you.

cityofpae.sa.gov.au/explore/libraries/programs-and-events

THE LATEST ON YITPI YARTAPUULTIKU

The Soul of Port Adelaide



Yitpi Yartapuultiku is the official name of our much-anticipated Aboriginal Cultural Centre, which will be built beside the Port River in Port Adelaide. With a name that means 'Soul of Port Adelaide' in the language of the Kurna people, it will be an authentic and unique community space for Aboriginal and non-Aboriginal peoples to learn, experience and be immersed in Aboriginal culture and to connect with each other, land and nature.

Our approach to this project allowed for cultural exchange within the design process, offering an example of a working method that is collaborative and respectful. Yitpi Yartapuultiku has been recognised as an outstanding example of authentic and collaborative planning and design with Aboriginal and Torres Strait Islander peoples, winning the Planning with Country award for South Australia in the 2022 Planning Institute Australia Awards.



With construction scheduled to begin during 2023–24, this exciting new Centre will deliver:

- Immersive Aboriginal cultural experiences that connect community, culture and Country
- Indoor and outdoor activity spaces for arts, performances, conferences and events
- Accessible public amenities, including a Changing Places facility, welcoming multipurpose community spaces and meeting rooms
- A stunning landscape that offers cultural spaces, views to the Port River, opportunities for nature play and a picnic area with lawns
- Improvements in the ecological health of the shoreline and in the water quality of the river
- Increases in the number of people visiting the PAE region

ParticipatePAE

participate.cityofpae.sa.gov.au

Dogs on Beaches Community Working Group

Our Dogs on Beaches Community Working Group have been busy working with our independent facilitator for the last few months to help us determine dog rules for PAE's beaches and foreshore reserves. So far, the group have been focusing on understanding our current rules and community needs so that they can put forward various options for the future rules for dogs on beaches. The Working Group will shortly finalise their proposal, after which we will open the project up for community consultation. This will be your chance to provide your feedback and let us know what you think of the proposed options.

To keep up to date with the project and find out when you can participate and provide your feedback, visit the Pups in Public Places project page:

participate.cityofpae.sa.gov.au/pups-in-public-places

Get on Board!

Our volunteer-driven buses provide free transport for all residents, making it easy for anyone to access local shopping centres, Libraries and community places. Late in 2021, we asked you for your feedback and suggestions regarding the bus program. As a result, we added two new door-to-door services and two new 'Hail and Ride' services. These changes helped us to create more options and flexibility for passengers. It has now been a year since we implemented these changes, and we want to check back in with passengers to see how well the service is working. Scan this QR code to see where the services operate, provide feedback and tell us how you would like us to help you get around our City.



BIG ISSUE

Connecting the community

The Big Issue, a social enterprise that aims to create employment opportunities for people in vulnerable situations, has received grant funding from the City of PAE to help new vendors expand into Port Adelaide. This move will not only provide an income for people in the area but will also help to build their confidence and self-sufficiency.

Wayne, one of the new vendors in Port Adelaide, expressed his excitement about this opportunity, saying, 'I love the customers, meeting new

people, and being out and about. It takes time to build up, but I'm enjoying the new spot. There's a good café on the corner, and the staff are friendly.'

You can find Wayne selling the Big Issue on the corner of Commercial Road and St Vincent Street, Port Adelaide.

For over 25 years, the Big Issue has been successful in providing similar opportunities for people across Australia from a range of backgrounds, such as those experiencing mental illness, homelessness, long-term unemployment, intellectual and physical disabilities, and drug and alcohol dependencies.

Together, we aim to support people to build their skills and improve their lives. It's a positive step towards creating a more inclusive and supportive community for everyone. To find out more about City of PAE community grants, please give us a call on 8405 6600



CLIMATE CHANGE ACTION SERIES

Make your home more environmentally friendly

We are holding the final two sessions of our popular Climate Change Action Series at the Parks Library in June.

These eight sessions, which began in February and run through till the end of June, aim to support you to make your home more environmentally friendly by getting advice from experts in a range of different fields. Participants have the chance to ask questions and learn about all things eco-friendly — from electric vehicles, solar photovoltaic and energy efficiency through to water sensitive urban design in your home and backyard.

Come and learn about the benefits, misconceptions and costs of running an electric vehicle on 7 June or find out more about how to make your garden more water sensitive at the final session of the series on 28 June. All sessions are on Wednesdays 5.30–6.30pm at The Parks Library. Book your free spot now at

paeclimatechangeactionseries.eventbrite.com.au



June long weekend bin collection

Collections will occur as normal on Monday 12 June 2023



MY FEELINGS BAG

'Ngaityu Muiyu Tantu' means 'My Feelings Bag' in Kurna

In May a new children's picture book in Kurna and English was launched and given out to local Aboriginal and Torres Strait Islander families as part of a book bag. Ngaityu Muiyu Tantu, or My Feelings Bag, aims to support parents to read and talk about emotions, and help their preschool-age children recognise feelings in themselves and others. The bag included a finger puppet, clap sticks, parenting information and a picture

book written by Aboriginal authors. Families can also learn the Kurna words for some common feelings. To hear an explanation of the artwork created by the local artist, simply scan the QR code above and watch the video.

This book was produced by Kalaya Children's Centre Staff and Management Committee, in collaboration with City of PAE Libraries and City of Onkaparinga Libraries. Funding was available through the Department for Education's Local Government Early Childhood Community Innovation grants, administered by the Local Government Association of South Australia.

UPGRADING OUR RESERVES

We are committed to ensuring that everyone in our community has access to pleasant, green open spaces and modern and accessible sporting and recreational facilities. As part of this commitment, we are excited to tell you about our recent reserve upgrades in the suburbs of Regency Park and Croydon Park.



Polonia Reserve

Work is well underway on our brand new Polonia Reserve, where we are working with local business Iguana Creative to create a soccer ball playground sculpture, which at 7m tall and 12m wide will be a sight to behold. With custom-designed and built play element features, the sculpture includes three levels, two slides, a climbing structure, a lookout platform, tessellated climbing steps, fire poles, an interactive ticket booth and exterior illumination. Polonia Reserve was originally home to the Polonia Soccer Club. From 1950, it became home to Croydon Football Club (Croydon FC), which has now moved up the road to the newly constructed Regency Reserve. Now, with its strong connection to Poland, the new soccer ball sculpture serves as a nod to this heritage. It is a fitting addition to the new Polonia Reserve which is sure to be a hit with people of all ages.

Regency Reserve

If you've driven down South Road recently, you've probably seen a big red grandstand along the freeway — part of Croydon FC's new home. This exciting new project features a two-storey building with a function room, canteen, kiosk, referees room, medical room and state-of-the-art change rooms for players. The reserve also boasts not one but two synthetic soccer pitches with floodlighting, a third natural turf pitch and a brand new electronic scoreboard. In addition to the sporting facility upgrades, we have upgraded the pitch to use it as a detention basin, which increases the capacity of our stormwater system. The upgrade also includes landscaping, a plaza and a car park. The \$7.5 million project began in November 2020 and was completed in February 2023. We can't wait to see all the incredible sporting moments that will happen here. The reserve is open for public use when Croydon FC are not using it, so grab your gear and head down to Regency Reserve to check it out for yourself.

GRANTS FOR TREE MAINTENANCE

Support to look after significant and regulated trees on your property

If you are a resident or business owner in PAE with regulated or significant trees growing on your property, we can provide you with a small grant to assist with your tree maintenance. Bigger trees provide significant benefits to our environment, but it can be an expensive task to safely maintain them on your property. We're offering up to \$1,000 towards the maintenance costs, which can include pruning or pest treatments. Not sure whether your trees are eligible? Regulated trees have a trunk circumference of more than 2m and significant trees have a circumference of more than 3m. Additional eligibility criteria and exclusions apply, visit: cityofpae.smartygrants.com.au This is a 12-month trial period, so don't miss out on this opportunity to help maintain the beautiful trees in our community!



URBAN MOVEMENT

Empowering young musicians

Supported by grants from PAE and other streams, Urban Movement provides opportunities for growth, development and career pathways in music and entertainment through school, NDIS and community programs. Two talented young women from PAE are making a name for themselves in the local music and youth communities after getting support and guidance through Robert Taylor and the rest of the team at Urban Movements. Elaria Medlin, known as Larzbar, completed the program during her time at Ocean View College and has since become a successful DJ, peer-mentor and facilitator. Tayla Christensen, also an Ocean View College alum, achieved her Certificate IV in Youth through the program. She is passionate about delivering youth programs at The Parks Library through PAE Youth.

To learn more about Urban Movement, visit urbanmovemententertainments.com or contact our Youth Team on [8405 6600](tel:84056600)

GEN GREEN

Hands-on learning for young minds

This monthly Climate and Environment session at Port Adelaide Library provides opportunities for children and young people to learn about the impacts and changes occurring in our local environment. Each session includes hands-on experiments or demonstrations, as well as the occasional excursion or offsite activity. On Friday 24 June, participants will learn about glaciers, icebergs and planetary albedo. July's topic is the coastal impact of sea level rise. Gen Green is suitable for children 10–16 years old, and session lengths may vary depending on type of activity. For event information, visit cityofpae.evanced.info/signup

LEARNING FOR PEOPLE OVER 50

U3A offers learning and connection

The University of the Third Age (U3A) is an international volunteer organisation providing educational, creative and leisure opportunities for people over 50 who are no longer in full-time employment. Membership can provide opportunities for people to take part in many activities, including games, table tennis, craft, cinema club and walks around PAE. Speakers also regularly attend to give talks about a wide variety of subjects, including local history, health and science.

Activities for the U3A Inner North branch take place at Enfield Community Centre, 540 Regency Road, Enfield, while activities for U3A Port Adelaide take place at the Sacred Heart Church Hall, 253 Military Road, Semaphore. For more information and a program for each branch, visit u3ainnernorth.org.au and u3aportadelaide.org.au or find them on Facebook.

YOUR LOCAL ENVIRONMENT

Join the discussion

Come along to the Port Environment Forum, where you can hear and connect with people interested in a variety of local environment topics. Meetings are at the Port Adelaide Town Hall on the third Thursday of each month. For agenda topics and to sign up, visit

eventbrite.com.au and search:

Port Adelaide Environment Forum

FREE ONLINE SESSIONS

Cut your energy bills and make your home more comfortable

We are offering a year-long series of free online seminars aimed at helping people make their homes more energy efficient and climate resilient — and save money. These sessions are perfect for people who are keen to take practical steps to improve the sustainability, comfort and running costs of their own home. The workshops are free and cover a range of topics, with more being added regularly. They are offered through AdaptWest, the Western Adelaide region climate adaptation plan formed through a partnership between the Cities of PAE, West Torrens and Charles Sturt. For more information and to book your free spot, visit adaptwest.com.au/sustainable-homes-expert-webinars-2023



HANDMADE MARKETS

Breathing new life into our laneways

Port Adelaide's laneways have been given a new lease of life, thanks to the success of our new quarterly Handmade Markets. Having attracted over 5,000 visitors, the first two markets are fast establishing the area as a hub for arts and culture.

The markets showcase local creators, live music and art workshops, all of which take place in a vibrant and energetic atmosphere. Visitors, both locals and tourists, have been expressing their delight with the quality of the products on offer and their excitement at having the opportunity to meet and talk with the makers.

If you're looking for a unique shopping experience and the chance to support local artists, and if you're keen to discover the hidden treasures of Port Adelaide's laneways, be sure to visit the next Handmade Market, on Saturday 24 June from 10am – 2pm.



Happy to Chat Benches

Keep an eye out for the Happy to Chat benches around PAE. These benches are part of a global movement to tackle isolation by getting people talking to ease their loneliness. Each bench will be clearly marked with a sign that says, 'Sit here if you are happy for someone to stop and say hello' — so take a seat if you are ready for a friendly chat. Look out for our volunteer chatters as well, who will attend the benches at certain times for even more opportunities to get chatting!

Out & About

Wonderwalls Port Adelaide, brought to you by Big Picture Series, Pirate Life and the City of PAE, saw artists, including Sofles (pictured here), create stunning murals around the City while visitors enjoyed family-friendly activities during the day and live music, performances and a pop-up bar in the evening.



Returning bigger and better than ever to Semaphore Beach, the three-day **Adelaide International Kite Festival** showcased kites of all shapes, sizes and colours, alongside amusements, rides and workshops — not to mention all the kites for sale!



With 84 exhibitors, several workshops and an amazing race with prizes, the **Western Adelaide Jobs Expo**, which was hosted by the City of PAE, City of Charles Sturt and Workforce Australia Local Jobs — Adelaide North, and sponsored by Mas National, drew nearly 2,000 attendees.

Presented by the Indian Australian Art and Cultural Association, and sponsored by a City of PAE Events Grant, **Holi on the Beach** brought people together on the Semaphore foreshore to dance, throw coloured dyes and celebrate their diversity. The free event featured live performances, music, DJs, kids' activities and much more.



Offering live music, arts, crafts, fashion and food the **Handmade Markets** at Iparrityi Laneway, Port Adelaide, showcased local artisanal creations and celebrated the region's rich artistic culture.

CELEBRATING PAE

Over the last few months, locals and visitors have had the chance to celebrate PAE in several ways. We hope to bring you more successful events like this in the future, so keep an eye out for what's happening next in PAE.



Meeting Christian White
Australian crime author Christian White spoke at out Klemzig Community Hall about his work as an author, screenwriter

and producer. Christian has written three novels, *The Nowhere Child*, *The Wife and the Widow* and *Wild Place*. He also co-created the television series *Clickbait* with Tony Ayres (*The Slap*), which went straight to Number One on Netflix in 41 countries, including Australia, the US and the UK. Christian writes compelling and entertaining thrillers, and the audience loved the chance to hear more about his craft and his love for plot twists and red herrings. His books are available to borrow from your local PAE Library and are a guaranteed great read!



Lit for Life: Inspiring literacy through theatre and music
Between April and June, Lit for Life brought books to life through a series of performances and events encouraging families to reconnect with their local Libraries and celebrate literacy. Families enjoyed shows by Patch Theatre, Windmill Theatre and the Adelaide Symphony Orchestra, all at different locations throughout PAE. All events were free for anyone with a Library card. These events were funded by The Libraries Board of South Australia and the Government of South Australia and City of PAE Libraries.

History Month

The annual SA History Festival took place this year from 1–31 May — and as always PAE was proud to participate. Our City is filled with landscapes and places that are of importance to the local Kaurana community, and events in PAE this year included exhibitions and guided walks that celebrated the City's rich history and heritage. Learning about history is a significant step towards continuing to build our story, and we look forward to offering more events at next year's festival.



What's On In Winter

Adelaide Model Railway Exhibition

Sat 10 – Mon 12 June | 9.30am – 4pm
Enter a miniature world of model railways and see the exquisite detail on display at the Adelaide Model Railway Show. Greyhound Racing SA, Cardigan Street, Angle Park.

Community Planting Day

Sun 18 June | 10am – 2pm

Join us for a fun-filled day of community planting at Major Peter Badcoe Reserve in Clearview. Bring your family and friends to help plant trees and shrubs and enjoy free activities such as face painting, live music and free plant giveaways. Or visit the stalls for an opportunity to learn more about the local environment from Green Adelaide and the City of PAE. For more information, and to find out more about this chance to make a difference and have fun, please contact us via email:

✉ environment@cityofpae.sa.gov.au

Refugee Week

Sun 18 June – Sat 24 June

An opportunity to experience and celebrate the rich diversity of refugee communities in our City. The theme for Refugee Week this year is Finding Freedom.

Visit our website for information about the special events that will help to promote togetherness and celebrate the courage, resilience, strength, culture and contributions of people of refugee background.

Handmade Markets

Sat 24 June | 10am – 2pm

Discover a range of artisan and vintage goodies, from arts and homewares to fashion and food. Pop in to browse the stalls or stay to enjoy the live music and creative workshops, sample the tasty treats and explore everything that the vibrant laneways of Port Adelaide have to offer. Iparityi Laneway, Port Adelaide (behind Mixed Creative).

Markets at the Mill

Sun 25 June

A new monthly market at Hart's Mill, with stalls, live music and food trucks. Free entry and lots of fun for the family. For more information visit Markets at the Mill Facebook page.

NAIDOC Week

Sun 2 July – Sun 9 July

The National NAIDOC Week theme for 2023 is For Our Elders. Across every generation, Elders have played, and continue to play, an important role and hold a prominent place in our communities and families. Visit our website for local events during NAIDOC Week.

SALA Festival

Tues 1 – Thurs 31 August

This popular annual festival showcases the work of living artists from all areas of our diverse community. Support our artists by visiting an exhibition, going on a tour or participating in a workshop. To see what's available in PAE, visit

📱 salafestival.com or

📱 cityofpae.sa.gov.au/arts-and-culture/sala

Polonia Reserve

Official Opening Celebration

Sat 5 August | 11am – 2pm

Experience a vibrant community event with the local Polish community, featuring a shared lunch, traditional performances, kids activities and a Croydon FC come-and-try session. Enjoy the opportunity to see the the amazing new playground while celebrating community diversity and having fun!

Friday Night Comedy at the Port

Celebrate the end of the week with Comedy at the Port on Friday evenings at Port Loch and Quay (aka the Port Adelaide Visitor Information Centre). Enjoy an hour and a half of comedy gold featuring a different line-up each week with local, national and international stars. For more information and tickets 📱 comedyink.live



SCHOOL HOLIDAY PROGRAMS

If you're looking for something to keep the kids entertained these holidays, then we have you covered! As always, there are plenty of fun, educational and free or low-cost activities offered around PAE during these weeks.

PAE Libraries

Our Libraries will continue to offer free, educational and entertaining activities throughout the school holidays. Details will be announced two weeks before the school holidays on 📱 cityofpae.evanced.info/signup or pick up one of our brochures at your local branch.

Kilburn Community Centre

These holidays, children aged 3–12 can enjoy a fun and exciting schedule to keep them entertained. For more information, please call the centre on 📞 8405 6730

The Lights Community and Sports Stadium

There are plenty of options to choose from at The Lights, with sports to come and try, games to play and lots of fun to be had! Session details available at 📱 thelights.com.au

Lefevre Community Stadium

Keep your kids engaged and connected at Lefevre, with a packed and diverse range of fun activities that will keep them busy throughout the break. For more information, please call the stadium on 📞 8405 6908



Stay informed and engaged with our initiatives by joining the conversation about topics that are important to you. With Participate PAE, our community engagement platform, you can stay up to date and never miss the opportunity to share your feedback and ideas on what's happening in the City of PAE. Discover more about our initiatives and their next steps at 📱 participate.cityofpae.sa.gov.au



Project Play
Upgrade of Playgrounds



Get on Board
Community Bus Review



Pups in Public Places
Dogs on Beaches

Winter Projects at a glance

Local Area Traffic Management	Open Space
Hillcrest	Mapleton Reserve, playground redevelopment
Klemzig	Northgate Reserve, playground redevelopment
Windsor Gardens	Roy Amer Reserve, playground redevelopment
Road and Footpaths	Semaphore Foreshore (South), playground redevelopment
Corralyn Tce, Enfield	St Albans Reserve, half-court basketball court and netball ring
Wattle St, Largs Bay	Timeball Tower Reserve, heritage wall repainting
Jubilee St, Port Adelaide	Walkley Heights, playground redevelopment and new BBQ, Shelter, Picnic Setting
Lipson St, Port Adelaide	
Stormwater Drainage	
Charnock St, Largs North	
Quebec St, Port Adelaide	
Wilson St, Queenstown	
Geraldine St, Valley View	
Cormack Rd, Wingfield	

There are currently 314 capital works projects underway in the City of PAE. To learn more about each project, visit our interactive capital works map 📱 cityofpae.sa.gov.au/development/current-projects

Notes from PAE Council Meetings

March 2023

- Resolved to investigate the way we distribute community grants to ensure they are distributed fairly
- Approved a new Significant and Regulated Tree Assistance Scheme for residents
- Resolved to undertake work to 'green' Victoria Street, Queenstown to cool it down
- Discussed options for Council-provided storage for community groups

April 2023

- Resolved to rename Palmer Avenue Reserve to Bridget Doody Reserve after a community deputation
- Approved a 12-month trial of a companion animal project
- Approved the Draft Annual Business Plan for community consultation
- Received a deputation from the Port Adelaide Artists Forum and will continue assistance
- Received a report into verge mowing and maintenance, with further workshops to be held

May 2023

- Approved concept and scope plans for Largs Reserve, Duncan Fraser Reserve and Klemzig Reserve
- Renewed five-year licence for Greenacres Community Garden
- Investigated parking management and arrangements for people with no off-street parking
- Extended lease agreement for Semaphore Steam Train
- Allocated \$60,000 for Heritage Grants Program, providing improvements at 30 properties

Civic Centre

163 St Vincent St
Port Adelaide

t: 8405 6600
w: www.cityofpae.sa.gov.au
e: service@cityofpae.sa.gov.au

Town Hall

34 Nile St, Port Adelaide

Visitor Information Centre
66 Commercial Rd, Port Adelaide
t: 8405 6560

Enfield Library Council Office

1 Kensington Cres, Enfield
t: 8405 6530

Greenacres Library Council Office
2 Fosters Rd, Greenacres
t: 8405 6540

Port Adelaide Library

2 Church St, Port Adelaide
t: 8405 6580

Semaphore Library 14
Semaphore Rd, Semaphore
t: 8405 6570

Parks Library

46 Trafford St, Angle Park
t: 8405 6550

Kilburn Community Centre
59 Gladstone Ave, Kilburn
t: 8405 6730

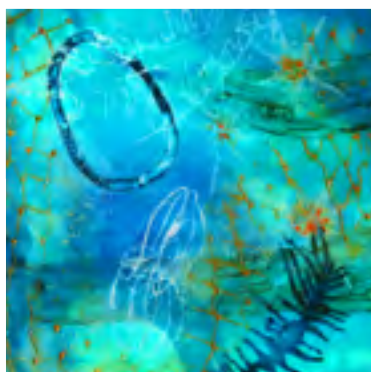
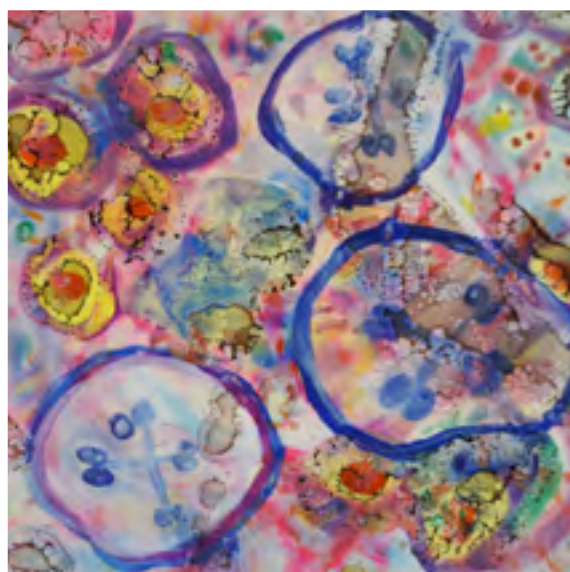
Enfield Community Centre

540 Regency Rd, Enfield
t: 8405 6556

Lefevre Community Stadium
541 Victoria Rd, Osborne
t: 8405 6908

The Lights Community and Sports Centre

Corner East Parkway and
Hampstead Rd, Lightview
t: 8405 6670




SALA

South Australian Living Artists Festival

Photography | Visual Arts | Painting | Ceramics | Textiles

There are plenty of ways to enjoy local art and culture around PAE.

Explore the many exhibitions across our City — there's sure to be something for everyone to enjoy.

To see the details of everything happening across the City of PAE, visit:  cityofpae.sa.gov.au/explore/arts-and-culture/sala