



## The Living Environment Report Card 2023 provides an update on key achievements.

The Living Environment Program (LEP) was established in 2021/22 as a three-year funded program that delivers on the City Plan 2030's environmental priorities and the foundation initiatives from the Living Environment Strategy 2022. The LEP allows for accelerated climate change and environmental action that moves beyond business as usual and responds to the Council's leadership and commitment on these issues.

### Highlights



**3,294**  
trees planted in  
streets and reserves



**100%**  
renewable electricity  
purchased for council  
operations



**121**  
bird species observed  
across 4 biodiversity  
sites (Jan 2022–  
June 2023)



**First**  
edition of Living  
Environment  
e-newsletter delivered

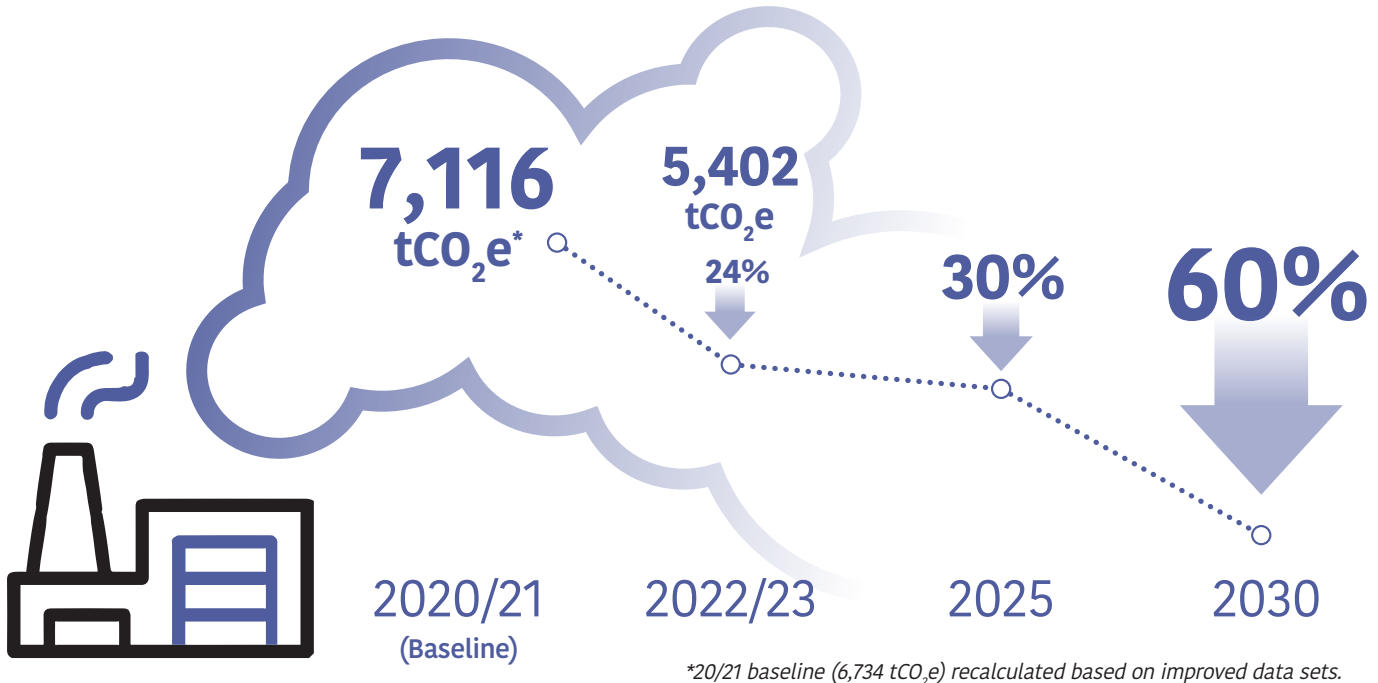


**24%**  
reduction in corporate  
greenhouse gas  
emissions compared  
to 2020/21 baseline



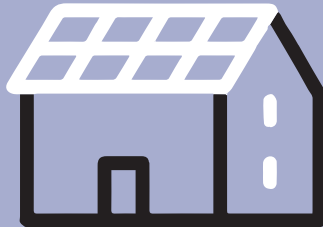
# Net Zero Emissions

Target to reduce corporate greenhouse gas emissions by at least 30% by 2025 and at least 60% by 2030 compared to the 2020/21 baseline (7,116 tCO<sub>2</sub>e\*)



**814kW**

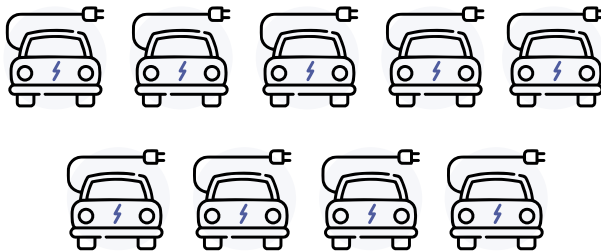
of rooftop solar on  
42 council operated or  
leased buildings (incl.  
88kW added in 2022/23)



**85kW**

of battery storage installed  
across 5 council sites

**9**

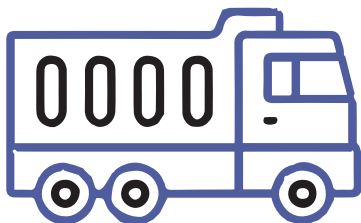


**EV Passenger vehicles** replacing petrol fleet vehicles



**6 EV charge stations** installed

3 at Civic Centre, 1 at Kilburn Depot and  
2 in the State Government multi-storey carpark  
on Robe St. (Supporting 10 charge points)



**1,178t**

of emissions generated by  
Council's kerbside collection  
vehicles was offset by  
Cleanaway

# Greening Our City

Target to increase tree canopy cover by

**35%**  
by 2050

(Baseline of 10% canopy coverage)



**19,155**

**local native seedlings planted**  
to enhance biodiversity and improve habitats for wildlife

**Trees Planted** annual target of **2,500 street trees, 500 reserve trees** (plus 500 trees on private land\*)

2021/22

**3,523**

**2,731 street trees and 801 reserve trees**  
(plus **285** on private land\*)

2022/23

**3,294**

**2,702 street trees and 592 reserve trees**  
(plus **489** on private land\*)

\*Includes trees given away at community events and via Get Shady program



**1-metre trees given away to households**  
in suburbs with low canopy cover and high urban heat



**In August 2022 a rare Spotted Pardalote was observed by one of our citizen scientists at Folland Park.**

This is only the 4<sup>th</sup> known sighting of this species in PAE

# Waste & Recycling



**9,694t**

Recyclables



**16,127t**

Organics



**25,665t**

General Waste



**57,439** households accessing the kerbside collection service



**27,406** hard waste collections booked



**3,031** tonnes of hard waste materials collected



**3,800** tonnes of garden waste dropped off

## Recycled Roads

**6,510**

tonnes of recycled asphalt saved  
**298 tonnes** of greenhouse gas emissions



**875,000** plastic bags, **430** tonnes of recycled glass, and **25,600** printer cartridges diverted from landfill in 2022/23 through the use of Downer's Reconophalt in our road resealing program



13 school & community waste education sessions with **KESAB**



242 people attended **9 Port Environment Forum sessions** supported by council



6 in-person Climate Change Action sessions and **3 AdaptWest RENEW webinars**



424 residents involved in **Grow It Local** activities (partnership with Green Adelaide)



6 Environmental Grants supporting local community groups valued at **\$27,148**



11 Green Business Incentive Scheme grants valued at **\$57,362**



60 bird surveys undertaken in council reserves by our volunteers