

CITY OF
Port Adelaide Enfield

P.A.Etoday

Big Picture Series | Keeping You Safe | Draft Annual Business Plan | Local Shopper Grants



The City of PAE acknowledges and pays respect to the traditional custodians of the land on which we stand, the Kurna people of the Adelaide Plains and pays respect to Elders past, present and emerging. We recognise and respect their cultural heritage, beliefs and relationships with the land. We acknowledge that they are of continuing importance to the Kurna people living today



Mayor Claire Boan

Welcome to the Winter edition of PAE Today. The cooler weather is on the way, but there are still plenty of opportunities to get out and about across PAE. History Month is happening during May, with a program full of talks, exhibitions and workshops being delivered at our libraries and other local venues. These fascinating activities help us to showcase our heritage and tell the story of our City.

There are a significant number of heritage sites in PAE, with the Port Adelaide State Heritage Area being particularly important to SA's maritime history. We have a long-standing commitment to the protection and promotion of our built heritage and provide qualified heritage advisory services, heritage plaques on prominent buildings and grant funding for property owners to assist in conservation works. We're currently asking for feedback on our Draft Built Heritage Strategy via our engagement platform at www.haveyoursay.cityofpae.sa.gov.au

PAE is also filled with landscapes and places that are of importance to the local Kurna community, and plans for our Aboriginal

Cultural Centre are progressing. The design of the centre will be completed during 2022–23 and is one of the priorities outlined in our draft Annual Business Plan.

The 2022–23 Draft Annual Business Plan presents the key initiatives we intend to deliver to support a thriving, well-connected and healthy community and environment. The plan also outlines how we will maintain our existing \$1.7 billion of infrastructure and deliver services that are both sustainable and in line with your needs and expectations.

You're invited to give your feedback on our plan for next financial year, because everyone who lives, works, learns or plays in PAE has a role in shaping our City now and into the future. To have your say, complete the survey at haveyoursay.cityofpae.sa.gov.au/annual-business-plan or give us a call. I look forward to your ideas and thoughts about what we can achieve together.

There is a vibrant arts culture around PAE and we were recently thrilled to receive the John Chataway Innovation Award for our Big Picture Series augmented reality experience as part of

the Adelaide Fringe. I was also pleased to be part of the judging panel to review the entries for our Living Landscapes Nature Writing competition, and I congratulate the winners. Their inspirational stories about the diverse natural environment reminded me of the beauty of our coastlines, dunes, rivers and mangroves. The winners were announced at our inaugural Living Landscapes Writers' Festival, held at Hart's Mill in April, which featured free talks, performances and family activities.

The South Australian Living Artists Festival (SALA) is on again this August, with plenty of exhibitions to enjoy, and the Umbrella Music Festival in July will mean even more opportunities to experience live music. We're also delivering a second round of Tiny Gems and will be installing small-scale artworks to discover.

From Kilburn to Klemzig, Largs Bay to Lightsview and Ottoway to Outer Harbor, there's plenty to see and do in PAE. Winter is a great time to enjoy all our wonderful city has to offer.

Winter PAE Projects *at a glance*



Dingley Dell Reserve playground replacement and 3 on 3 basketball court

E S P Rogers Reserve upgrade

E P Nazer Baseball fence upgrade

E P Nazer Reserve irrigation upgrade

River Torrens Linear Path lighting upgrade

Wirra Drive irrigation upgrade

Waterford Reserve Tennis Court resurface

Harry Wierda Reserve upgrade

E A Carlson Reserve redevelopment

Northgate Reserve Boardwalk replacement

Mangrove Cove Boardwalk replacement

Dover Street Reserve redevelopment

Sheffield Reserve redevelopment completion

Margaret Street Reserve minor upgrade

This is just a snapshot of the PAE Projects we're working on, to see a full list visit our website cityofpae.sa.gov.au/projects

PAE Today is an official publication of the City of PAE and is produced four times a year. It is delivered in PAE to most residential properties via letterbox distributors and to businesses by Australia Post. Copies of each edition are also available from our Libraries and Community Centres, and online at www.paetoday.com.au. Please contact us if you require assistance to access a copy. Suggestions for articles can be submitted to communications@cityofpae.sa.gov.au. **Disclaimer** While every effort is made to report community information fairly and accurately, the City of PAE accepts no responsibility for any errors or omissions which may occur. Programs and events are subject to change to comply with COVID-19 restrictions. Latest information is available at www.sahealth.sa.gov.au. The views of the contributors are not necessarily shared by the City of PAE. **Cover Photo** Local residents watching the Big Picture Series animations swirl around the iconic Port Lighthouse.

Ward in focus

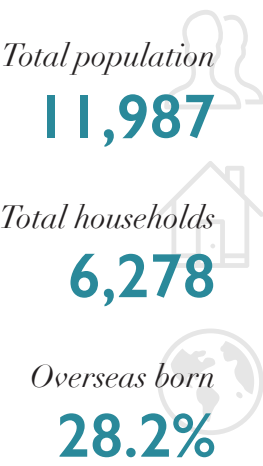
Port Adelaide

The Port Adelaide ward includes the suburbs of Gillman, Rosewater, Port Adelaide, Alberton, Queenstown, New Port, Glanville, Ethelton and Semaphore South. From 1879–85, the suburb of Ethelton was known as Ethelston. William Waddam, who owned the land, applied the name Ethelton to the area bounded by Maud, Harvey and Carlisle Streets. Ethelton was named after Ethel May Phillips, one of the six daughters of a Port Adelaide doctor in the 1800s.



Alberton Cemetery is located in Pioneer Park at the end of Parker Street, Alberton. On 17 November 1847 the Governor of South Australia granted the site to St Paul's Church of England for burials. This was the first suitable and available dry ground for a cemetery near the Port, as salt swamp surrounded the land on two sides. An article written by Mr A T Saunders appearing in the Register describes the old cemetery as 'a

wilderness of prickly pear'. When workmen were removing the prickly pear, they stumbled upon a spot which the men of the district had for years been using as a gambling den. The first burial was in October 1846, for Thomas Cleveland, aged 40. The cemetery was closed to new burial plots in January 1874, with the last official burial conducted in 1922. The land was transferred to the City of Port Adelaide in 1938 and it became a park in 1994.



Cr Joost den Hartog

I have always loved port cities. The work ethics, shared values and sense of community seem to be stronger in ports. I moved here from Amsterdam over 15 years ago, and I have never left. What goes for port cities around the world goes for Port Adelaide — times two! In fact, the sense of community in the Port was my inspiration to become a Ward Councillor. Our family lives in Alberton in an old shop, and we feel so lucky to live in this warm and caring neighbourhood. Taking care of our environment and each other are my priorities on Council.



Cr Steve Vines

The Port Ward is rich in character, history and diversity. It encompasses the ongoing wisdom of Kaurna elders as well as the heritage precinct's character buildings, museums and harbour. There are established suburbs and there are also new housing developments underway. I live and work in the heritage precinct, right in the heart of the Port. My daily walk along the loop path around the inner harbour takes me past the beautiful Workers Memorial at the Black Diamond Corner, where I often pause to reflect on the service of those ordinary men and women who did extraordinary work in our community in the past. As my walk continues to the beach at Semaphore South, I consider how fortunate I am to be living in such a wonderful community.

Notes from PAE Council Meetings

February

- Final concept designs for Polonia Reserve
- Partnership with Alberton Primary School to build a nature playground in Queenstown
- Additional budget allocated to complete Birkenhead Naval Reserve
- Allocation of funds to upgrade Dingley Dell Reserve in Blair Athol including signage in recognition of Mr Brian Doherty

March

- Allocated funding of \$31 million for an Aboriginal Cultural Centre and broader development of Western Region Reserve
- Allocated \$20,000 for the Get Shady project to give away free trees to residents in suburbs with low tree canopy – see page 9 for more details
- Community bus review endorsed
- By-laws review and consultation endorsed
- Funding allocated for feasibility study into Port River swimming pool

April

- Proceeding with upgrade of inclusive changing rooms at T K Shutter Reserve for \$5.1 million
- Agreed to deliver a new Port River sports festival each year for the next three years
- Reviewed the Local Area Traffic Management program which will continue
- Funded a once-off payment of \$11,000 to support the Semaphore Surf-Lifesaving Club's purchase of an all-terrain vehicle to patrol our beaches

SEEING THE BIG PICTURE



FRINGE ART EXPERIENCE WINS PRESTIGIOUS AWARD

Did you catch our outstanding augmented reality (AR) art experience during the Adelaide Fringe? If not, don't despair! The BIG Picture series has been so popular that we have decided to extend the season right through until February 2023. The BIG Picture Series is an immersive, self-guided tour of the Port — a chance to see the area and some of our favourite 'Wonderwalls' street artworks in an entirely different light. The family-friendly and COVID-safe experience features eight new AR artworks by a stellar line-up of talented local and international artists, including ETAM Cru, Dave Court, Vans The Omega, Charles & Janine Williams, Kurt Bosecke,

Sam Songailo, Elizabeth Close and Demsky J. The AR street-art experience was recently awarded the 2022 John Chataway Innovation Award by the Adelaide Fringe. This award recognises excellence in digital innovation and creative storytelling. John Chataway was an Adelaide-based director, producer, writer and the previous chair of the Adelaide Fringe board. Now is the time to experience the dynamic and evolving Port like you've never experienced it before — in your own time and in your own way! Simply download the app for free on an Apple or Android device and scan eight AR artworks throughout the Port.

AUGMENTED REALITY EXPERIENCE



BIG PICTURE SERIES AR PORT ADELAIDE

'We are pushing our technology, artists and team to the limits and it's proven to be a winning formula with the outcome of our Big Picture Series AR app experience. We're delighted that the AR works have been received so well and that our season will now be extended so that the public can continue to enjoy these technical artworks.'

– Event curator, **Joel Van Moore**
(Vans The Omega)

To learn more about the Big Picture Series in the Port visit www.cityofpae.sa.gov.au/explore/arts-and-culture/the-big-picture-series



The Port is home to several galleries, museums and artist studio spaces, so make a day of your BIG Picture series walk and venture indoors for even more creative experiences.

Post Office Projects (POP) is a vibrant arts space located in the old Post Office Building. Their curated program offers regularly changing exhibitions, publications, special projects and artists' studios to profile and support the practices of early and mid-career artists. You can book in for an art class with renowned artist John Ford at the nearby **Port Community Arts Centre** or catch the current exhibition in the unique **Black Diamond Gallery** space. The **Visitor Information Centre** is also home to a gallery space with exhibitions to enjoy. **POSH Arts and Design Studio** is a collective of artists and designers based in Port Adelaide creating locally made and designed products.

The historic Coach House, built in 1848, is now home to the creative **Jackalope Studio Gallery** which is an artist studio, gallery, gift shop and framing studio. A short walk over the bridge you will find **Gallery Yampu**, complete with beautiful views across the water to the historic facades of Port. The Gallery hosts regularly changing exhibitions by emerging and established artists and is home to **Port Adelaide Artists Forum (PAAF)** a collective of creatives bringing

dynamic arts experiences to the Port.

Mixed Creative is a creative venue for live music, performance, artists' studios, exhibitions and a licensed café and bar. Open Friday to Sunday, the venue offers a regularly changing program with a focus on artists and musicians based in Port Adelaide.

Vitalstatistix (Vitals) is a nationally recognised multidisciplinary cultural organisation working across theatre, dance, performance art, sound and social practice. Located in the heritage-listed Waterside Workers Hall, Vitals offers year-round public programs of performance, residencies, events and special projects.

The **South Australian Maritime Museum** is located in the historic Port Adelaide precinct and preserves, explores and celebrates the human history of our ocean and rivers. Another fun place for young families as well as the serious researcher is the **National Railway Museum**. Located over two huge pavilions and an 1870s heritage-listed goods shed, the Museum has steam locomotives, diesel engines and loads of carriages to explore.

Meanwhile, the **South Australian Aviation Museum** features displays related to the history of civil and military aviation in South Australia.

To take a tour of these fantastic venues and cultural institutions, download the Visit Port Adelaide app on Apple or Android.

CONTACT YOUR COUNCILLORS

At the City of PAE we have a Mayor and 17 Councillors who are located around seven wards. They are your representatives, so if you have any concerns, ideas or issues you would like to discuss with them please contact an Elected Member in your Ward.

Mayor

Claire Boan • 8405 6773
claire.boan@cityofpae.sa.gov.au

Enfield Ward

Cr Barbara Clayton • 0411 816 800
barbara.clayton@cityofpae.sa.gov.au

Cr Olivia Colombo • 0448 258 279
olivia.colombo@cityofpae.sa.gov.au

Cr Carol Martin OAM JP • 0417 828 195
carol.martin@cityofpae.sa.gov.au

Klemzig Ward

Cr Tony Barca • 0418 891 321
tony.barca@cityofpae.sa.gov.au

Cr Paul Russell • 0407 500 881
paul.russell@cityofpae.sa.gov.au

Northfield Ward

Cr Mark Basham JP • 0418 809 364
mark.basham@cityofpae.sa.gov.au

Cr Hannah Evans JP • 0433 385 002
hannah.evans@cityofpae.sa.gov.au

Cr Matt Osborn • 0402 760 028
matt.osborn@cityofpae.sa.gov.au

Outer Harbor Ward

Cr Vanessa Tulloch • 0427 480 790
vanessa.tulloch@cityofpae.sa.gov.au

Cr Adrian Wotton • 0459 355 869
adrian.wotton@cityofpae.sa.gov.au

Parks Ward

Cr John Croci JP • 0481 091 022
john.croci@cityofpae.sa.gov.au

Cr Kim Dinh • 0410 729 255
kim.dinh@cityofpae.sa.gov.au

Cr Kat Mitchell • 0430 275 922
kat.mitchell@cityofpae.sa.gov.au

Port Adelaide Ward

Cr Joost den Hartog • 0416 845 204
joost.denhartog@cityofpae.sa.gov.au

Cr Steve Vines • 0413 975 064
steve.vines@cityofpae.sa.gov.au

Semaphore Ward

Cr David Wilkins • 0444 501 539
david.wilkins@cityofpae.sa.gov.au

Cr Helen Wright • 0439 485 737
helen.wright@cityofpae.sa.gov.au



Keeping You Safe

Public Health in PAE

Public health is at the front of everyone's mind during a pandemic, so now is a good time for us to tell you more about the wide range of work we do in this area to keep our community safe. Our Environmental Health team provides a wide range of services. To showcase these services, we're creating a series of videos to give you a glimpse into what happens behind the scenes. These videos will be uploaded to our website and social media pages over the coming weeks. Every day we are out on the streets inspecting and auditing food businesses, beauty premises, pools, spas and high-risk water systems to prevent the community from becoming sick. We license supported residential facilities to ensure that some of our more vulnerable residents are protected. We also approve wastewater applications for the areas of our community that are not on sewers and ensure they are well maintained.

On top of this proactive work, we also respond to community requests. These may include queries about local nuisance matters, squalor and pests. We even ensure that there isn't a risk to public health from residual chemicals in a building after SAPOL has identified a clandestine drug lab.

Our aim is to keep our community safe and protected from disease and health risks. We offer advice and support to both residents and businesses, and we work with businesses to ensure they comply with the requirements relevant to their industry. This can involve training or the provision of information and other supports. When there have been repeated breaches of the standards, we may fine the business, or take legal action as a last resort. This helps us to ensure the community are not exposed to preventable health risks.

Food Safety Standards

We work hard to prevent people from experiencing food poisoning in the City of PAE. To do so, we inspect food businesses right across PAE to ensure they are meeting Food Safety Standards. We generally carry out these inspections unannounced so that we can assess standards on any given day. We also respond to customer requests regarding concerns about food safety and carry out audits at facilities like aged care homes and childcare centres, to ensure that service providers are protecting our more vulnerable residents.

Have you seen the stars?

The Food Safety Rating Scheme helps customers make informed choices about where they eat by giving them information about how well food businesses comply with food safety standards. Eligible food businesses are provided with a star rating between three and five stars during their routine inspection. A high star rating score means a high standard of food safety. So, when you next visit a takeaway business or a restaurant in our City, look out for a certificate displaying how many stars have been achieved.

Local immunisation clinics

We run public immunisation clinics monthly throughout the year in a few different locations. Child and adolescent scheduled vaccines are available free to all Medicare Card holders through all our clinics. The yearly influenza vaccine is free for eligible groups under the National Immunisation Program, and it is available to other people for a small fee. You can find details about this service on our website.



Pests can cause problems

Without the appropriate prevention and control, pests such as European wasps, bees, mosquitoes and rodents can become a nuisance in our community. Here is how we can help:

- **European wasps and bees:** We provide a free service to residents to manage European wasps and bees. As bees play an important part in the pollination of plants, we will always try where possible to relocate a beehive rather than to destroy it.
- **Mosquitoes:** We have a control program to treat known breeding locations. Remember, though, that breeding sites can form in still water (fresh or salty), which may collect in poorly maintained gutters, pools, ponds, puddles and containers. This means that everyone has a role to play in preventing mosquito breeding sites from forming.
- **Rodents:** Rats are a common pest and ongoing control measures may be necessary – check out our website for some great ideas. If these measures aren't working and there is evidence of an infestation our team may be able to provide further assistance

Safety standards at your salon

Environmental Health Officers (EHOs) visit beauty salons, tattooists and other businesses that carry out skin penetration practices to ensure that high hygiene standards that prevent the spread of infection or disease are maintained. This is important to ensure adequate cleaning of equipment and tools such as nail files, foot spas or applicators so they don't cause infections. In addition, lack of sterilisation and aseptic techniques during skin penetration activities can have serious consequences, such as the spread of viral infections, so it is important that EHOs ensure that businesses are compliant. If you have concerns about the hygiene of a business, please contact us.

Public health at pools and spas

You probably know that you should not go swimming in a public pool if you have diarrhoea, but did you know that you need to stay out of the pool for another two weeks after becoming ill? Disinfection kills most but not all germs, so if you are or have recently been sick, you can spread your germs through the water. Our EHOs regularly visit public pools and

spas to ensure that the people using them are protected from water-borne illness. Our inspections will check to ensure that the business specifically deals with water quality management aspects such as circulation and filtration, automatic disinfection, pH analysis, water testing procedures, water replacement and chemical balance.

Contact us

Whether you are a resident or a business owner, for more information, support and advice, please phone ☎ **8405 6832** or email

✉ environmental.health@cityofpae.sa.gov.au



There are 1,056 food businesses in the City of PAE. During 2020–21 we carried out a total of 989 food business inspections.



Aboriginal Cultural Centre discussions at the March Council meeting

ABORIGINAL CULTURAL CENTRE

A place for connection

Planning for the Aboriginal Cultural Centre is continuing. We will build the centre in Yerta Bulti, the heart of Port Adelaide, in the Western Region Reserve which has direct access to the Port River. The centre will be a culturally safe place for First Nations peoples and the broader community to connect with each other, as well as with the land and nature. It will provide a multidimensional indoor–outdoor setting, connecting community, culture and country and offering an authentic place for people to immerse themselves in local culture.

The Aboriginal Cultural Centre project is more than just a new public building. It will be the largest investment in public open space ever undertaken in Port Adelaide. The project will significantly improve and enhance public amenity for community and visitors alike for generations to come.

The project will deliver environmental benefits, including the restoration of pre-European vegetation, new habitat for native fauna, an energy-efficient building, additional greening of the site and a new natural shoreline that improves water quality.

The estimated construction cost to deliver the project is \$30.9 million. The work will create 66 jobs in the local building construction sector, with a resulting impact of \$56.6 million on the economy of the City of PAE.

This project is a pivotal investment in our community's wellbeing, in the vital process of healing for Aboriginal and Torres Strait Islander peoples and in walking together through our shared journey of Reconciliation. We invite our community to join us on this journey. Stay up to date with the project at

 haveyoursay.cityofpae.sa.gov.au

The Aboriginal Cultural Centre will feature:

- Extensive landscaped areas to provide enhanced amenity and access, increased tree canopy, immersive cultural experiences, cultural practice and learning
- Outdoor areas for gatherings, events, ceremony and cultural practice
- A multipurpose community building for events, ceremony, meetings and performances
- Inclusive and accessible public amenities, including a 'Changing Places' facility
- Rehabilitation of the shoreline to provide a natural and accessible beach connection to the water
- Site stabilisation works to manage erosion and future sea level rise
- Entry statements, interpretive signage and artworks
- Car parking and accessible footpaths throughout the site

COUNCIL ELECTIONS 2022

Your community needs you this November

Council elections will take place during October and November this year. All voting in council elections is by mail. If you have enrolled to vote, you will receive a voting package through the mail and you must return your vote in the reply-paid envelope provided in the package.

Unlike state and federal elections, it is not compulsory to vote in South Australian council elections. However, council elections are the biggest single voluntary civic participation activity in the state, with nearly 400,000 people voting in the previous elections in 2018. Voting gives you a say about who will represent your interests as a Councillor. It is the best way to have your say about what happens in your local community.

If you own a business or a property within the City of PAE, or if you are part of an organisation within the Council area, you may also be eligible to vote.

To check your entitlement to vote and to complete an enrolment form, contact us today.

There are several different forms to choose from, so we can help ensure that you have the right one. The electoral roll closes on 29 July, but the forms are available now, so don't miss this opportunity to have your say in this year's local government elections.

Become a Councillor

In August, nominations for a position on Council will open. As a Councillor, you will have the opportunity to influence local directions and create long-term, positive outcomes for your community. The role is both rewarding and challenging. It requires commitment, responsibility and accountability. Nominations close on Tuesday 6 September. You can read more about what the role entails on the Local Government Association website

 lga.sa.gov.au/council-elections

Authorised by Mark Withers, Chief Executive Officer

The Woodville Concert Choir are on the lookout for new members! This friendly choir have been meeting in the area for more than 40 years, and have a repertoire that includes soul, sacred, jazz and pop numbers. The group meets every Tuesday from 1.30–3pm at the Croydon Park Uniting Church, 310 Torrens Road, Croydon Park. Contact the Secretary on  0456 179 918 for more information.

GET SHADY PROJECT

Increasing our tree canopy

To increase our tree canopy across PAE, we are continuing with our commitment to plant at least 3,000 new trees in our streets and reserves, plus 500 new trees on private land each year. The suburbs of Enfield, Kilburn, Wingfield, Gepps Cross and Woodville Gardens have some of the lowest tree canopy coverage in PAE, so residents of these suburbs can now register for a free tree to plant at home. Canopy trees in your garden provide shade and much-needed cooling during our summer months. They can also help reduce your electricity bills and increase your property value. To register, visit our website and search:

Get Shady



ON THE STRAIGHT AND NARROW

Improved safety for everyone

For several years, we have been working on a major project to make narrow streets safer and more accessible for everyone. This will affect the 285 streets across PAE that are under 7.2m wide. We need to allow cars, cyclists, garbage trucks and, importantly, emergency service vehicles to be able to travel unimpeded along streets without parked vehicles blocking their access or hindering visibility. We also need to ensure that residents have proper access to their driveways and that all people can safely use our footpaths on foot, in a wheelchair, with a walking stick or with a pram.

As always, the outcome is a balancing act. We need to consider the wishes and needs of everyone in the community who is affected, including residents and road users. We also need to meet the legal obligations for road management.

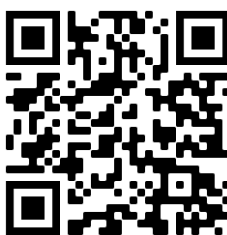
We understand that many streets have remained unchanged for some years. It takes time to adjust to changes, but we have been working to minimise the impact for residents where we can. To learn more about this project, please watch the Q&A video on our website and social media, or feel free to reach out to our transport team by calling 8405 6600

LIVING LIFE ON THE SEDGE

Bringing back lost butterflies

The yellowish sedge skipper butterfly was last seen in metropolitan Adelaide more than 30 years ago. This butterfly vanished when its much-loved food and home of thatching grass, *Gahnia filum*, disappeared due to urban and horticultural development.

We have been working with Green Adelaide to return this long-lost butterfly to the wetlands. For 10 years, we have been planting and tending to the grass that the larvae need to survive.



Recently, we released the first batch of butterfly larvae into the wetlands. Scan this QR code to see a video of the butterflies being released.

Butterflies are native pollinators. Our work to rewild Adelaide with butterflies is a vital step in their conservation, and it also forms part of Adelaide's push to become a National Park City. A National Park City is a movement to improve a city's liveability through a better connection between people and nature. The idea is to create a city where people live with nature, not against it. By claiming this title, Adelaide would draw local, national and international awareness and attract more investment to become an even more liveable city.



GREEN GRANTS

Helping businesses go green

Are you the owner of a small to medium-sized business wanting your business to contribute towards a sustainable future? If so, apply now for our new City of PAE Green Business Incentive Grant. You could receive grant money of up to \$5,000 to pay for renewable energy systems, new trees and plantings, water-efficient irrigation systems or other innovative proposals aligned with the guidelines that help make your business greener.

This is just one of the programs we are delivering to create a more sustainable PAE. To learn more or to lodge an application, visit our website and search:

Green Business



DRAFT ANNUAL BUSINESS PLAN 2022–23

Have your say

We are currently asking for feedback on our Draft Annual Business Plan for 2022–23. During the upcoming financial year, we want to:

- Complete design of the Aboriginal Cultural Centre
- Continue our adaptation to climate change through our Living Environment Strategy to green our City, lower our emissions, and protect our coast and landscape
- Upgrade change rooms at Greenacres, T K Shutter and Gepps Cross Reserves to modernise and make them more accessible
- Celebrate and enjoy the Port River with the inaugural three-day Port River Sports Festival featuring sports, performance, culture and food
- Complete master plans to redevelop Semaphore Foreshore and E P Nazer Reserve
- Deliver eight playground upgrades across the City, including Dover Street Reserve (Blair Athol) and Polonia Reserve (Croydon Park)
- Deliver \$65.5 million of infrastructure works to improve our streetscapes, community facilities, roads, drainage, parks and reserves

We want to hear your feedback on the draft plan and give you the chance to have your say about what we are proposing before we adopt the plan and budget. Community consultation about the Draft Annual Business Plan is open from now until 25 May 2022. To have your say:

- Visit haveyoursay.cityofpae.sa.gov.au
- Email consultation@cityofpae.sa.gov.au
- Phone our Customer Relations team on 8405 6600
- Write to us at PO Box 110, Port Adelaide, SA, 5015



Emerald Reserve Playground, Ottoway

WINTER IS COMING

Rainfall, storms and flooding

In winter we experience higher rainfall than at other times of the year and there may be the occasional risk of flooding in your area.

Useful phone numbers

- **Sandbags:** If the Bureau of Meteorology forecasts storms or flooding, we may be able to supply a limited number of sandbags to you ahead of time to protect your property. Please call us on 8405 6600 to check on sandbag availability in your area.
- **Emergency:** If your property is in immediate danger of flooding, please call the State Emergency Services (SES) on 132 500.
- **Mains/sewerage:** For burst water mains or sewerage problems, please call SA Water on 1300 729 283.

Because the Port Adelaide area is low-lying, we have several large pumping stations and holding basins to help discharge stormwater to the Port River during rainfall events. You can look up our current stormwater projects on our website on our Capital Works Construction map.

You can also access a Flood Awareness Map through WaterConnect. The link is available on our website. Our Community Emergency

Management Plan covers the risk posed by floods and other emergencies such as storms and earthquakes. Read the plan at

 cityofpae.sa.gov.au/community/services/comp

COME OUT AND PLAY

Inclusive playground to try

We have completely upgraded the Emerald Park Reserve playground on Rosewater Terrace, Ottoway, to make it more accessible and inclusive. The playground is designed to appeal to children aged from 3–10 years. Accessibility features in this playground include a wall-mounted Connect 4 game and the All-Abilities Spinner, which provides users with a thrilling spin. People who are standing or seated in a wheelchair can access both these pieces of equipment. There is a softfall rubber surface throughout the play space.

Our Inclusive Communities Plan sets out the ways we work to ensure that people with disabilities can participate in community life. We are keen to connect with residents and visitors to the City who have a disability so that we can hear perspectives on different projects as they arise. To join our contact list, please email:

 inclusive.communitites@cityofpae.sa.gov.au

YOUNG PAE SUPERSTARS

Parks Library Youth Action Team

On Sunday 15 May, we are holding an eSports event to celebrate Youth Week at the Parks Library. Following the success of our Mario Kart tournament in January, local youths have been eager for another eSports day, and our newly formed Parks Library Youth Action Team are here to help. We will set up Mario Party Superstars on our Nintendo Switches for everyone to have a go, and there will also be board games and drawing materials available — not to mention some snacks! So bring along your gaming passion for a fun day for our PAE youth.

This event is the latest in a continuous stream of eSports events held within in PAE. We hope to see more and more people getting involved with eSports through our local Libraries, so keep an eye out for this and other events on our social media pages or across all five of our Libraries.

GEN GREEN

Going beyond carbon neutral

Gen Green is a library initiative for young people (aged 10–16 years) who are interested in climate and environmental sciences and would like to attend monthly exploration and discussion



Young people playing sport on the Peninsula

sessions. Topics covered each month focus on the scientific understanding of our shifting climate and the impacts of human activity on our natural world.

Our science communication and STEM education specialist, David, runs these sessions, designing them to include hands-on experiments, activities and open discussions to help engage young minds. Over the course of the year, participants will visit other community locations, build their own environmental sensors, explore the coastal impacts of sea level rise, work out the difference between heat and temperature, build an enclosed environment in a bottle ... and much more. Participants will also learn about local initiatives and have the chance to meet community groups who are doing amazing work to help adapt, reduce or reverse the future impacts of the changing climate and preserve our natural environments.

Gen Green Sessions are held the last Saturday of each month from 10.30am at Port Adelaide Library. The upcoming event in April will focus on the science of Weather vs Climate. To book your spot, or for more information, visit

cityofpae.evanced.info/signup and search:

Gen Green



YOUTH NIGHTS CONTINUING TO GROW

Opportunity on the peninsula

Our friendly team at the Lefevre Community Stadium are running monthly youth nights where students from local primary and high schools can come to the Lefevre Recreation Reserve to participate in a variety of sports and activities. From basketball, tennis, cricket, netball, footy and the skatepark, there's plenty for the kids to do. Plus all kids receive a free cold drink and snack to keep them going.

The free Youth Nights offer children and families in the area the opportunity to connect with each other outside of school and meet new people. It has been thrilling to see so many children and families come together to create a positive community atmosphere. For more information about the Youth Nights please call the Lefevre Community Stadium on [8405 6908](tel:84056908)

MAKING AN IMPACT

Libraries help you live your best life

Public libraries in South Australia welcome over 9.7 million visitors each year. More than half of all South Australians have used a public library at some stage in their lives.

Each month, members borrow around 40,000 items from City of PAE Libraries. These items include books, DVDs, magazines, toys and games from libraries across all of South Australia.

Perhaps you read for leisure and relaxation, or to help your children prepare for school, or for your own personal development. Whatever your reason, reading can be beneficial to your individual growth and sense of self-improvement. Libraries are also a great place for social connections. Every month, our five Libraries offer over 100 programs, which around 2,000 people attend. There are a range of learning programs, including early learning, digital skills and hands-on workshops as well as guest speaker talks and special interest groups. The social connection extends beyond the sessions themselves, as many participants spend time chatting afterwards, taking the opportunity to meet old and new friends alike.

Libraries are also a place where you can connect to the online world for free. Members use over 4,000 computer sessions a month on our public PCs, plus they can access WiFi and study spaces. So to improve your wellbeing and live your best life, visit your local library today.



PAE Economic Development Advisor Suman meets with a local business owner

BUY LOCAL

Supporting business in PAE

We know that the last couple of years have been challenging for many of our local businesses. To help business bounce back from the pandemic, we have recently launched a 'Buy Local' initiative. Eligible businesses can apply for funding to better market themselves via online channels, host activations, build a better connection with their customers or encourage shoppers to their local area.

The Local Shopper Grant program has two funding streams. Examples of projects under the Digital Shopper Stream could include:

- A café wanting to promote coffee bean products to a local audience online and reach new customers
- A small retail business struggling to get established and wanting to reach new customers via Shop Local SA to encourage local shoppers to find them
- A tourism business wanting to reach new audiences by offering their services on Shop Local SA

The In-person Shopper stream could suit:

- A café putting on art classes for local parents
- A small retail business hosting an in-store event to bring people in
- A function attracting new customers to a retail or physical business
- Live music events at the local pub/café
- A manufacturing businesses hosting an event to bring in local customers

For more information or to apply, visit our website and search:

Buy Local



HOLE IN ONE

Adapted golf is a hit

Golf can be challenging at the best of times, but people who are blind or vision-impaired often need a little more help to get around the course. Beyond Blindness has a team of volunteer caddies who attend our City of PAE Valley View golf course with blind players for a social round every Tuesday.

The volunteers accompany blind players to guide them to the correct spot, point them in the direction of the hole and provide information to help them take the perfect swing. They then go and hunt for the brightly coloured ball, ready for the next shot. Instead of using traditional white golf balls, players use fluorescent red balls, which some vision-impaired people can faintly see, along with the bright red flags in the holes.

Golf is just one of the many activities that Beyond Blindness organises to assist people with vision impairments to help them stay social and active. They are always in need of volunteers to drive and pick up members for activities such as golf, beach walks and craft. They would also love to have more volunteers to accompany members to these activities. Beyond Blindness is based in Gilles Plains and assists over 600 members to navigate life without vision. They run a training program to help schools, businesses and community organisations to upskill.

Contact info@beyondblindness.org.au for more information. Alternatively, to find out more about social activities in the City of PAE, please call us on [8405 6600](tel:84056600)



Wonder & Wisdom

Our Wonder and Wisdom intergenerational playgroup is back at Enfield Community Centre each Thursday. The program, which is a partnership with Playgroup SA, connects families with young children (0–5 years old) to older residents within the community. If you and your children would like to be part of this amazing opportunity, or if you are an older resident or a residential facility that would like to be involved, or if you would just like to know more about the program, please contact Diana on [8405 6709](tel:84056709).

WRITERS' FESTIVAL

Living landscapes that inspire

We held our inaugural Living Landscapes Writers' Festival on 9 and 10 April at Hart's Mill. The event brought together nationally and internationally renowned writers and thinkers on nature to share their stories and perspectives about the beautiful tapestry of coastlines, dunes, rivers, wetlands, mangroves, parks and reserves that makes up PAE.

On Saturday there were free author talks, kid's activities and performances, followed by an evening of live music and a powerful address given by Jennifer Mills. On Sunday, Ali Cobby Eckermann, Inga Simpson, Rachael Mead and Karen Wylde delivered sell-out writing masterclasses.

Congratulations to the winners of our Nature Writing Competition, whom we announced at the Festival. Junior joint winners were Leah Manders for 'Dark Lagoon Disaster' and Xavier Murdoch for 'Ball Lightning on Port Adelaide River'. The winner of the middle grade category was Esther Lawry with 'No Man is an Island', while Christopher Page won the Adult category for 'Sanctuary'.

LINKEDIN LEARNING

Head into our digital library

Did you know that your Library membership gives you free access to LinkedIn Learning? If you are curious about photography, design or starting a business, you can browse through the thousands of courses available at your fingertips. It's a great opportunity to kickstart a new hobby or interest.

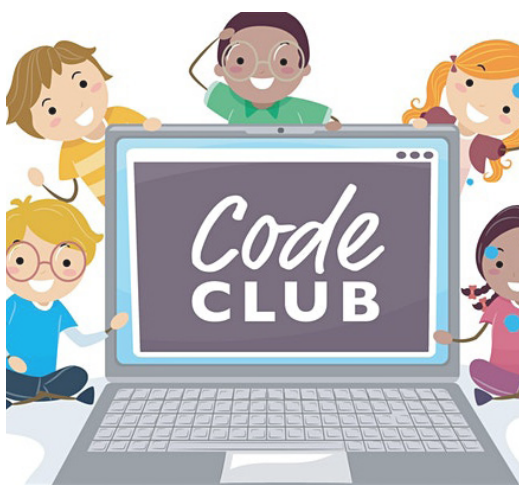
You can sign up online for a digital library membership in addition to your general membership. By signing up you will also get access to our full digital library offering, including eBooks, eAudiobooks, magazines, movie and TV streaming and the incredible Britannica Online. Sign up today:

 cityofpae.sa.gov.au/explore/libraries/digital-library

CONNECTING WITH THE WORLD VIRTUALLY

Using tech to stay in touch

When it comes to technology, the world is constantly evolving. However, COVID-19 really threw a spanner in the works, forcing many of us into the unknown realm of virtual work meetings (and wearing track pants all day). Although many services are now beginning to return to normal, it seems that virtual meetings are here to stay. Not everyone has the space or technology for this, though. The Libraries have installed new and specialist equipment in some meeting rooms that will enable you to join any Zoom meeting at the touch of a button — no device required! Whether you want to catch up with family, attend a virtual class/meeting or chat to your GP, these meeting rooms provide a quiet and private space for you to easily connect. The rooms are available at Greenacres and Enfield Libraries during Library opening hours, and at Parks Library between 7am and 10pm. Call your preferred site to book.




CODE CLUB

Teaching digital skills through game creation

Do you know a child who loves gaming? We wouldn't be surprised if you did! The Digital Australia (DA22) report, which the Bond University conducted in 2022 in collaboration with the Interactive Games & Entertainment Association, found that 78% of people under the age of 18 play video games. Games like Roblox and Fortnite have become staples in kids' lives, with many making constant requests for 'battle passes' and 'v-bucks'.

Code Club aims to take this excitement for games and turn it into a creative and educational experience. Through coding, exploration and collaboration, often within a set theme and with creative restriction, participants learn to have interactive experiences and create games.

At the end of each term the Library displays participants' creations for the whole community to engage with. (This is also a great opportunity for participants to show their friends and family what they have been working on!)

Code Club is for kids aged 8–15. Greenacres and Parks Libraries currently offer sessions, and a new session will be starting at Port Adelaide Library on Fridays 4–5pm from 6 May. Spaces are limited, so book your place via  cityofpae.evanced.info/signup


ROTARIANS AT WORK

Transforming communities

Rotary is an international voluntary service club that works across cultures to champion peace, fight poverty and connect continents and communities.


The Rotary Club of Regency Park may be small in number but they make a huge difference in PAE, to the extent that they won a Service club of the Year award in 2020–2021. During this time, they raised funds for local youth and homelessness support groups and managed donations of clothes. They also funded attendees at the National Youth Science Forum (NYSF), Rotary Youth Leadership Awards (RYLA) and The One and All Rotary Youth Challenge. They work closely with the thriving community garden at Ridley Grove, and have supplied hearing support devices into classrooms at Largs Bay School.

Rotarians also volunteer at the Semaphore Carousel to keep this vital historic carousel working and open to the public. Funds that are raised are used in projects both locally and internationally.

The club is always welcoming of members. Meetings are held every Tuesday night from 6–7.30pm at the Caledonian Hotel in North Adelaide. If you would like to know more, contact Secretary Jack  0418 605 475 or  info@RegencyParkRotary.org.au

STANDING BY IN SUPPORT

Free service offered following a suicide

StandBy is a community-based program delivered by Anglicare that is dedicated to supporting people who have been bereaved or impacted by suicide. Each suicide impacts many people, including family members, close friends, kinship groups, colleagues and whole communities. Because everyone grieves differently, some people may not require support services for many weeks, months or even years. StandBy provides free face-to-face and/or telephone support to anyone who is bereaved, whether by a recent or past suicide. The service is accessible 24 hours a day, seven days a week, across the Adelaide metropolitan region. To connect with your local StandBy co-ordinator  1300 727 247 You can self-refer or call on behalf of another person if you have their consent.



Keep an eye out for some new road murals we recently have commissioned in the Parks area. The artworks will be installed in highly used locations near the Parks Library, St Patrick's School and the Linsell Lodge Aged Care Facility and were designed with input from library customers, children and older people living in the area.



SA History Festival Sun 1 May – Tues 31 May

South Australia's History Festival is an annual statewide event exploring South Australia's history. Held throughout May each year, the History Festival explores the state's places and spaces, as well as the stories, collections and ideas that make us who we are.

The Local History Team has organised some great treats for all history buffs during May this year. To book into the following amazing events please call Port Adelaide Library ☎ 8405 6580

- Margaret Brodie will be joining us to lead a walking tour of the pre-colonial history of the Port River and her own Lartelare Family Story. Margaret will explore the changing landscape and her Aboriginal ancestors who have called the Port their home for generations
- The footy has traditionally been a place for beer, pies and the archetypal 'Aussie bloke'. More recently, we have seen stories about players coming out, LGBTQi+ supporters

and a women's league. As these themes become more commonplace, stories of inclusion and respect emerge. Drop into the Port Adelaide Visitor Information Centre to see a display examining the history and future of the game

- The wheels on the bus go 'round and round'! The heritage plaque guided bus tour is back and this year you can discover historical locations across the Enfield area. Come and join us as we take a step back in time! Singing encouraged
- Don't forget, the Local History Team can also help you with your family history if you don't know where to start. We are offering individual sessions to help you learn more and explore your family history

Right across PAE there will be plenty of options, ranging from talks to tours, walks to workshops, and exhibitions to special events:

📱 festival.history.sa.gov.au/about/

- Passionate locals will be giving guided Port Walks around historic Port Adelaide. Let them take you back to the mid-1800s to learn what life was like for the early settlers

and how it came to be that Port Adelaide was dubbed 'Port Misery'

- The Mayfair Bakery, which has been a key landmark in the Port for 152 years, will be holding an exhibition called 152 Years of History in the Baking. Celebrate the past and discover the evolution of baking in this captivating exhibition
- The Port Adelaide Historical Society will be holding an exhibition of never-before-displayed historic images of the Port Society members will be in attendance to provide context and colour to the social, built and maritime treasures
- Dr Barry Blundell will give talks on the history of policing in the Port Adelaide area. The retired Detective Senior Sargent will give insight into local crimes, significant events, fascinating historical images and a tour of the old lock-up
- The Art Deco & Modernism Society of Australia will be offering a self-guided Art Deco & Modernism Walk in Port Adelaide. Download the free Visit Port Adelaide app to enjoy the tour

Civic Centre

163 St Vincent St,
Port Adelaide

t: 8405 6600
w: www.cityofpae.sa.gov.au
e: service@cityofpae.sa.gov.au

Town Hall

34 Nile St, Port Adelaide

Visitor Information Centre

66 Commercial Rd, Port Adelaide
t: 8405 6560

Enfield Library Council Office

1 Kensington Cres, Enfield
t: 8405 6530

Greenacres Library Council Office

2 Fosters Rd, Greenacres
t: 8405 6540

Port Adelaide Library

2 Church St, Port Adelaide
t: 8405 6580

Semaphore Library

14 Semaphore Rd, Semaphore
t: 8405 6540



South Australian Youth Week

Fri 13 – Sun 22 May

This initiative celebrates and recognises the value of young South Australians to their communities. SA's Youth Week showcases young peoples' talents, contributions and achievements, promotes a positive image of young people and acknowledges their common interests and diverse backgrounds.

Harmony Celebration

Fri 20 May | 11am – 2pm

Join us for this free community event organised by Neami National, with displays, food and festivities. A celebration of community at a local level, to be held at Hart's Mill Flour Shed.

Western Adelaide Jobs Expo

Wed 25 May | 10am – 5pm

Connecting you with local employers and service providers to find out where the jobs are and how to get them. Gain valuable information about apprenticeships and traineeships and seek out some career guidance. There are also cover letter and resume workshops, guest presenters, refreshments, prizes and more! The Lights Community and Sports Centre, 244–270 East Parkway, Lightsview

Community Planting Day

Sun 26 June | 10am – 2pm

We need your help to increase biodiversity on the peninsula. Head down to Falie Reserve, corner of Mersey Rd North and

Archie Badenoch Cct, Osborne, opposite the entrance to Mutton Cove Conservation Reserve to participate in this year's planting day. There will be face painting, stalls and a bbq.

Umbrella Festival

Fri 1 Jul – Sun 31 Jul

South Australia's largest open access music festival is back in 2022! The PAE area will be brought to life with a diverse range of live music events in all the places you know and love...and perhaps a few that will take you by surprise!

Celebrate Prospect Road

Sat 9 Jul | 10.30am – 3pm

The first stage of streetscape works to enliven the Prospect Rd retail precinct in Kilburn and Blair Athol is now complete. Come along and enjoy the new node locations with shady trees, street furniture and public art or pop into the local businesses to sample their delicious and unique offerings. There will be music, giveaways and displays.

SALA Festival

Mon 1 – Wed 31 Aug

This annual festival showcases the work of living artists from all areas of our diverse community. Get your art fix during August by visiting one of the exhibitions occurring in PAE, or tune in to one of the online talks or workshops. For more information, visit

salafestival.com

Create your own Tiny Gems artwork at a free workshop with Ellen Schlobohm on Sat 28 May at the Port Library. Bookings essential: tiny-gems-2-ellen-schlobohm.eventbrite.com.au

SCHOOL HOLIDAYS

If you're looking for something to keep the kids entertained these holidays, then we have you covered! Every school holidays, there are plenty of fun, educational, and free or low-cost activities offered around PAE. Children and young people can get involved in programs across our libraries, community centres and other local spaces.

PAE Libraries

As always, there are free, educational and entertaining activities on offer at City of PAE Libraries, this time with the theme of Plastic Free July. Through comedy, magic and special effects, Professor Planet and his Revolutionary Recyclatron will help children become enthusiastic recyclers. Or join us for the SeaStar Rock show where kids can sing, dance and play games as they help navigate the oceans on an exciting eco adventure. There will also be regular digital and STEM sessions. Details will be announced two weeks before the school holidays in our brochures (which you can collect in-branch) or by visiting

cityofpae.evanced.info/signup

The Lights Community and Sports Stadium

There are plenty of options to choose from at the Lights, with sports to come and try, games to play and lots of fun to be had! Session details available at

thelights.com.au

Lefevre Community Stadium

Stay busy and connected at Lefevre, with roller skating sessions, a Kid's Zumba session and netball and tennis clinics. There are also board games and arts and crafts to enjoy. For more information, please call the stadium on

[8405 6908](tel:84056908)

Kilburn Community Centre

Head over to the community centre on both Wednesdays of the school holidays for games, roller skating, face painting and plenty of fun. Contact the centre on

[8405 6730](tel:84056730)

Parks Library

46 Trafford St, Angle Park
t: 8405 6550

Kilburn Community Centre

59 Gladstone Ave, Kilburn
t: 8405 6730

Enfield Community Centre

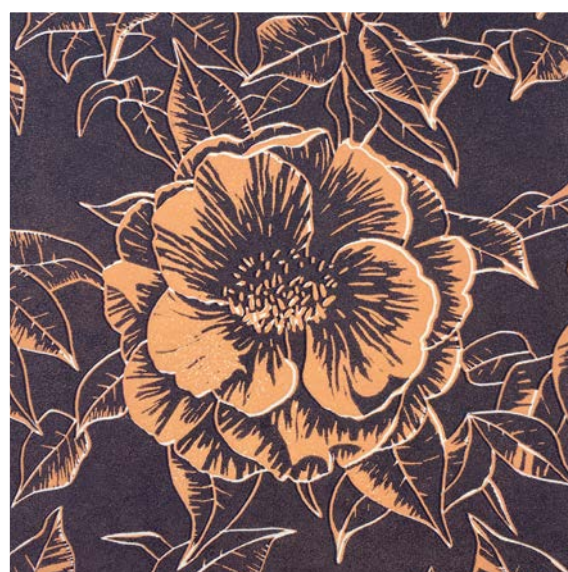
540 Regency Rd, Enfield
t: 8405 6556

Lefevre Community Stadium

541 Victoria Rd, Osborne
t: 8405 6908

The Lights Community and Sports Centre

Corner East Parkway and Hampstead Rd, Lightsview
t: 8405 6670




SALA

South Australian Living Artists Festival

Photography | Visual Arts | Painting | Ceramics | Textiles

There are plenty of ways to enjoy local art and culture around PAE.

With more than 20 SALA exhibitions across our City this year there's sure to be something for everyone to enjoy.

To see the details of everything happening across the City of PAE, visit:  cityofpae.sa.gov.au/explore/arts-and-culture/sala