

**NEW
FOUND
SOUND**

ACCESS GUIDE

NEW FOUND SOUND

ACCESS GUIDE

At the City of PAE, we believe everyone has the right to have access to our event program. This document outlines access information for New Found Sound in 2024.

This Access guide includes information about:

Where and When	3
What	3
Cost	3
Weather	3
Public Transport to the Event	4
City to Port Adelaide	4
Glenelg to Port Adelaide	4
Elizabeth to Port Adelaide	4
Accessible car parking	5
Accessible Venues and Details	7
Port River Cruises (Location 1)	7
The Banksia Tree (Location 2)	8
Confession (Location 3)	9
Iparrityi Laneway (Location 5)	11
Milledge’s Distillery (Location 6)	12
Pirate Life Brewery (Location 7)	13
Port Adelaide Lighthouse (Location 8)	14
Port Admiral Hotel (Location 9)	15
Accessible Toilets and Change Facilities	16
Other Public Accessible Toilets	16
Assistance Animals	16
Water	16
Food	16
Security Staff	16
Emergency Management Procedures	17
Staff Assistance	17
First Aid	17
Contact Information	17
Event Map	18

NEW FOUND SOUND

ACCESS GUIDE

Where and When

The event will start at 6pm and go through until 11.10pm on Saturday 17 February at the following venues: Archie Badenoch, The Banksia Tree, Confession, Fergie Mac's Lounge, Iparityi Laneway, Milledge's Distillation, Pirate Life Brewery, Port Admiral Hotel and Port Adelaide Lighthouse. Please check the map at the end of this guide for venue addresses and key program timings for each venue.

What

New Found Sound is a free live music event in Port Adelaide, showcasing over 25 of South Australia's best emerging local musicians. It will take place on one night across multiple venues in Port Adelaide.

At New Found Sound, you can follow and explore a free music discovery trail that runs between nine diverse spaces across the Port. There's truly something for everyone, with the line-up spanning genres including punk, soul, indie folk and psych rock. Program highlights include Placement, Coldwave, Sons of Zoku, Timberwolf, Nancy Bates, Naomi Keyte, Alana Jagt, Django Rowe Trio and many more.

Cost

This is a free community event to attend and tickets are not required.

Weather

New Found Sound is an all-weather event. The event will run rain or shine – unless weather conditions become extreme and pose a dangerous risk to safety. We recommend wearing appropriate clothing and footwear suited to the time of year and weather conditions on the day.

Road Closures

There are no road closures for this event.

NEW FOUND SOUND

ACCESS GUIDE

Public Transport to the Event

City to Port Adelaide

Adelaide Metro Bus Services - 118, 150, 235, 239, 254X, 252

- Disembark on Commercial Road and travel a few minutes along Commercial Road to the event
Train Services- City to Outer Harbor Line
- Disembark at Port Adelaide Railway Station, approximately 900 metres to the Lighthouse.
Please note that the Port Adelaide Station Ramp has a steep decline

Glenelg to Port Adelaide

Adelaide Metro Bus Services - 265, 300 and 118

- Disembark on Commercial Road and travel a few minutes along Commercial Road to the event
Train Services – Glenelg – Flinders – Seaford – City - Outer Harbor

City to Outer Harbor Line

- Disembark at Port Adelaide Railway Station, approximately 900 metres to the Lighthouse.
Please note that the Port Adelaide Station Ramp has a steep decline

Elizabeth to Port Adelaide

Adelaide Metro Bus Services - 560-361

- Disembark on Commercial Road and travel a few minutes along Commercial Road to the event
Train Services - Gawler to Adelaide then Adelaide to Port Adelaide
- Disembark at Port Adelaide Station, approximately 900 metres to the Lighthouse. Please note
the Port Adelaide Station Ramp has a ramp but it has a steep decline

Weekend routes may change, please check all information with Adelaide Metro before departing. To Plan your journey, please utilise Metro Adelaide Plan a Trip www.adelaidemetro.com.au/plan-a-trip/plan-my-journey

In the sidebar of Google maps you'll see 'Route options'. You can choose routes that are wheelchair accessible, have less walking or fewer transfers.

NEW FOUND SOUND

ACCESS GUIDE

Accessible car parking

We have identified the following accessible carparks that are available for use across the Port precinct.

Parking will be free of charge across the event date unless otherwise sign posted.



NEW FOUND SOUND

ACCESS GUIDE

Free Parking areas

https://www.cityofpae.sa.gov.au/_data/assets/pdf_file/0028/413488/Map_PortAdelaideFreeParking.pdf

We recommend using the Pavely app from the App Store or Google Play to support your journey to Port Adelaide and the New Found Sound event.

Pavely is a social planning app which makes it quick and easy for people with accessibility needs or those close to them to find new places to go or things to see and do.

Pavely is created by the community, for the community. The functionality has been shaped by people living with disability to ensure optimisation of usability and accessibility.

Pavely users agree that the app will be 'life-changing', the time saved planning outings enables greater spontaneity, and supports the ability to explore new places.

The app provides a directory of venues and facilities across the state and allows users to search based on accessibility ratings and inclusive features such as the venue's entrance, amenities, parking and options for assistance, vision, and sensory needs.



NEW FOUND SOUND

ACCESS GUIDE

Accessible Venues and Details

The following venues are included in New Found Sound – an image of the venue space itself is included and details about its level of accessibility is included as advised by Venue Management.

[Port River Cruises \(Location 1\)](#)

There will be music programming inside the Port River Cruises 32 seater vessel on McLaren Wharf. This music will be acoustic with low level amplification. No lighting effects will feature at the performance.

To access this venue you will need to enter the dock area by a reasonably steep ramp and board the vessel by climbing a set of steps. Please note this venue is not wheelchair accessible and there will be a cruise and a show in the Port River area for each performance. Each session is approx. 50 minutes return.



Please see our staff member in pink vest for further assistance in accessing this Venue if required.

NEW FOUND SOUND

ACCESS GUIDE

[The Banksia Tree \(Location 2\)](#)



The music programming inside The Banksia Tree will be lightly amplified featuring a soloist, duo and full band during the night. No lighting effects will feature at the performances. The café will have seating and tables available for patrons with a mix of café style chairs and booth seating.

To access the internal area of the venue, you will need to enter via a two-step area through these doors pictured above (note: the tree will be removed on event day). Please note the internal space of this venue is not wheelchair accessible.

Patrons are also able to be seated outdoors at the tables pictured. The hospitality of the venue is table service should you wish to order food and drinks.



NEW FOUND SOUND

ACCESS GUIDE

[Confession \(Location 3\)](#)

The music programming inside Confession will be amplified with expectations that levels of sound will be moderate. Lighting will feature in this performance but no strobing effects. The music featured will be by a local jazz group. This venue has a complete access guide which you can visit [here](#).

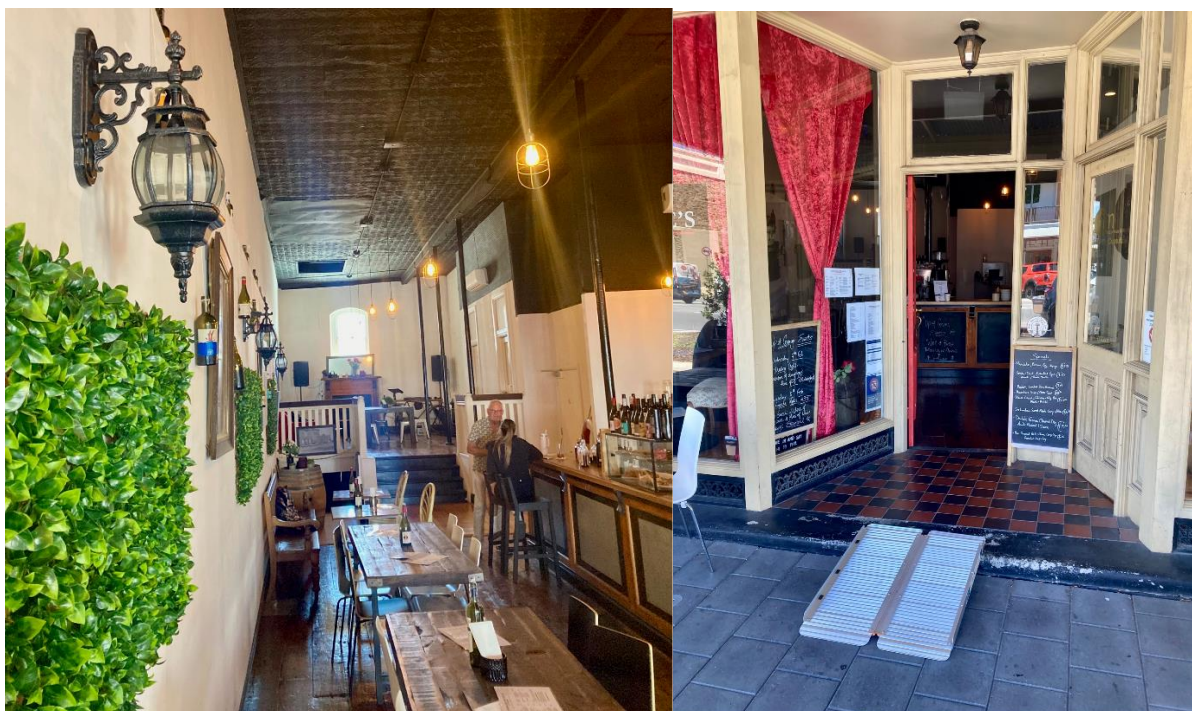


NEW FOUND SOUND

ACCESS GUIDE

Fergie Mac's Lounge (Location 4)

The music programming inside Fergie Mac's Lounge will be lightly amplified featuring a jazz trio and quartet as well as a DJ playing jazz vinyl. No lighting effects will feature at the performances. The bar will have seating and tables available for patrons (pictured).



To access the internal area of the venue, there is a slight step into the space. If there is a requirement for a ramp to enter the venue, please make venue management aware and the pictured ramp will be made available for entry and exit to the venue.

Please see our staff member in pink vest for further assistance in accessing this Venue if required.

NEW FOUND SOUND

ACCESS GUIDE

Iparrityi Laneway (Location 5)

The music programming will take place outside in Iparrityi Laneway which is wheelchair accessible throughout the whole site. A temporal stage will be built over the coloured mural on the ground. This stage will have post punk bands and is expected to be moderate to loud levels of sound with lighting effects (but no strobing effects).



There will be tall tables and chairs as well as low tables and chairs available throughout the site for patrons (pictured).



Please see our staff members in pink vests for further assistance in accessing this Venue if required.

NEW FOUND SOUND

ACCESS GUIDE

[Milledge's Distillery \(Location 6\)](#)

The music programming inside Milledge's Distillery will be moderately amplified featuring a duo and two larger alt-country bands. Minimal lighting effect will feature in this performance. There will be no strobing lights. The venue will have seating and tables available for patrons (pictured).



To access the internal area of the venue, there is a slight lip on the bottom of the bifold door but the venue is wheelchair accessible.



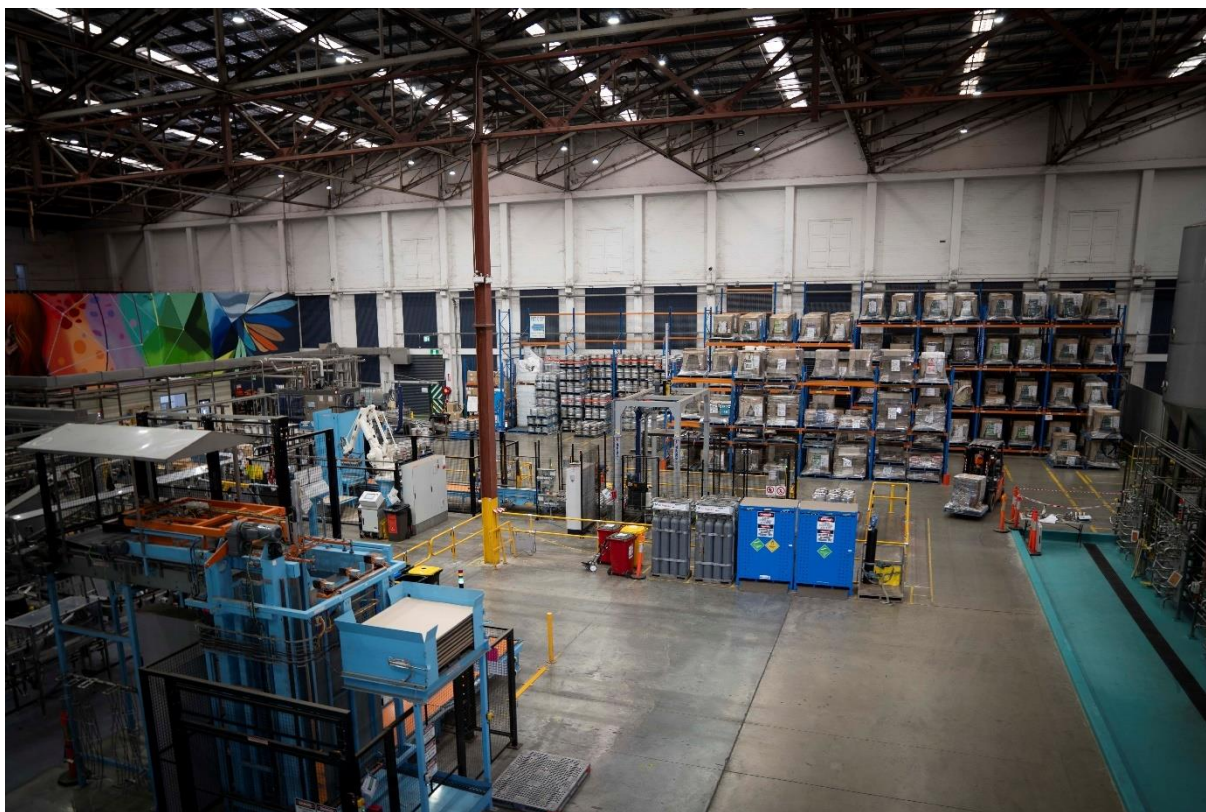
Please see our staff member in pink vest for further assistance in accessing this Venue if required.

NEW FOUND SOUND

ACCESS GUIDE

[Pirate Life Brewery \(Location 7\)](#)

The music programming will take place inside the brewing tank area of Pirate Life Brewery which is wheelchair accessible. A temporal stage will be built for the bands at one end of the space where the blue boxes are sitting (middle right of photo). This stage will have psychedelic bands and is expected to be moderate to loud levels of sound with lighting and visual effects (but no strobing effects).



Please see our staff member in pink vest for further assistance in accessing this Venue if required.

NEW FOUND SOUND

ACCESS GUIDE

[Port Adelaide Lighthouse \(Location 8\)](#)

There will be music programming inside the historical Port Adelaide Lighthouse at the bottom level only through the multiple rooms that are located at ground level. No access to the staircase is permitted. The music will be a soundscape with live elements from the performers with low level amplification. No lighting effects will feature at the performance.

To access this venue you will need to enter through the door pictured - please note that the rooms at ground level have narrow doorways which could be prohibitive for people requiring wheelchair access.

Please see our staff member in pink vest for further assistance in accessing this Venue if required.



NEW FOUND SOUND

ACCESS GUIDE

[Port Admiral Hotel \(Location 9\)](#)

The music programming at Port Admiral Hotel will be positioned in the beer garden (pictured) and will be moderately amplified featuring a duo, soloist and large six piece band. The genre of music is folk. There will be no lighting effects for this performance. The venue will have bench tables available for patrons (pictured).

To access the internal area of the venue for the bar, there is a ramp on the front entry points to the venue for wheelchair access.

Please see our staff member in pink vest for further assistance in accessing this Venue if required.



NEW FOUND SOUND

ACCESS GUIDE

Accessible Toilets and Change Facilities

There are accessible toilets at the following venues participating in New Found Sound:

- Confession (location 3 on the map)
- Iparrityi Laneway (location 5 on the map) – One Accessible toilet- not to standard, toilets located behind the Centre in the courtyard. Access- go around the back of the buildings- opposite town hall ramp entrance
- Miledge's Distillery (location 6 on the map)
- Pirate Life Brewery (location 7 on the map)
- Port Admiral Hotel (location 9 on the map)

Other Public Accessible Toilets

- Exeloo 9a Mundy Street, Port Adelaide 24 hours access
- Further Public toilet information can be found at toiletmap.gov.au/

Assistance Animals

Assistance animals are welcome and encouraged for anyone who needs them. All animals must be on a lead, with their owner at all times while on the festival site, and we ask that you clean up after your animal and dispose of waste in the appropriate bins located onsite.

Water

Free water will be made available at all Bar Areas located at participating New Found Sound venues, except Archie Badenoch and Port Adelaide Lighthouse as these unique spaces do not have such facilities available.

Food

There will be a variety of food offerings across participating venues in New Found Sound (except Archie Badenoch and Port Adelaide Lighthouse). However we do understand that pre-packed snacks are important for people, so such food is allowed into participating New Found Sound venues.

We understand that not all food operators on site will be fully accessible and encourage you to chat to the vendor, or one of the team on site who will work with you to ensure your needs are met.

Security Staff

SRS Security have been hired as security for the New Found Sound event located in Iparrityi Laneway, they can be found at the entrance and exits of the event as well as roaming throughout the venue. Please see them for any security concerns. In the event of any security

NEW FOUND SOUND

ACCESS GUIDE

concerns in any other participating New Found Sound venue, please seek Venue Management for assistance.

Emergency Management Procedures

The City of PAE takes safety very seriously and in the event of an emergency we ask that you follow the directions of event staff who will be in pink high-visibility vests or Venue Management.

Staff Assistance

Event Staff will be available to assist with questions or information during the event, they will be easily identified through wearing pink high-visibility vests.

The Event Information stand for New Found Sound can be found in Iparrityi Laneway (location 5 on the map) near the entrance to this event site. Staff will be on hand to assist with any concerns, questions, assistance or information needed and will be wearing a pink vest.

First Aid

Minor First Aid will be available in the rear courtyard located at Visitor Information Centre, 66 Commercial Rd. The courtyard is accessed from Iparrityi Laneway via Commercial Road. First Aid will be provided by St John's Ambulance. Or if you are located at any of the other participating New Found Sound venues, please seek venue management for First Aid assistance.

In the event of a medical emergency during the event, 000 will be called.

Contact Information

We encourage you to chat to one of the team in advance of your attendance by emailing us: events@cityofpae.sa.gov.au or calling us at the event on 0417 590 261. They're available for any pre-event or on-site assistance.

NEW FOUND SOUND

ACCESS GUIDE

Event Map

EXPERIENCE LIVE MUSIC ACROSS THE PORT

NEW FOUND SOUND

<p>1</p> <p>PORT RIVER CRUISES MCLAREN WHARF</p> <p>6^{PM} KELLY MENHENNETT 7^{PM} NANCY BATES 8^{PM} TIMBERWOLF</p>	<p>2</p> <p>THE BANKSIA TREE 147 ST VINCENT ST</p> <p>6^{PM} STEPHI 7^{PM} QUEBEC ECHO 8^{PM} WAKE IN FRIGHT</p>	<p>3</p> <p>CONFESSION 60 HARRYATT ST</p> <p>6^{PM} SANCTUM 10^{PM} SATURDAYS W/ JAZZ IT UP</p>
<p>4</p> <p>FERGIE MAC'S LOUNGE 229 ST VINCENT ST</p> <p>6^{PM} DJANGO ROWE TRIO 6^{40PM} DJ TROY J BEEN 9^{PM} DANIEL ISLER</p>	<p>5</p> <p>IPARRITYI LANEWAY</p> <p>6^{PM} BLUSH 7^{PM} STREET LEGAL 8^{PM} NIGHT RITES X THUNDER SPEAKS 9^{PM} PLACEMENT 10^{PM} COLDWAVE</p>	<p>6</p> <p>MILLEDGE'S DISTILLERY 8A TODD ST</p> <p>7^{PM} MARK CURTIS @ WILLIAM JACK 8^{PM} RYAN MARTIN JOHN 9^{PM} ALANA JAGT</p>
<p>7</p> <p>PIRATE LIFE BREWERY 18 BAKER ST</p> <p>8^{30PM} EFFIE 9^{30PM} LOS PALMS 10^{30PM} SONS OF ZÖKU</p>	<p>8</p> <p>PORT ADELAIDE Lighthouse BLACK DIAMOND SQUARE</p> <p>6-9^{PM} LOUD CLOUDS</p>	<p>9</p> <p>PORT ADMIRAL HOTEL 55 COMMERCIAL RD</p> <p>8^{PM} NAOMI KEYTE 9^{PM} TILLY TJALA THOMAS 10^{PM} STURT AVENUE</p>

17 FEB
9 VENUES | 26 ACTS
PORT ADELAIDE
FREE ENTRY

PRESENTED BY: PROGRAM PARTNERS: MEDIA PARTNER: