

PAE CONNECT

Connecting you to services in the
City of PAE and beyond



CITY OF
Port Adelaide Enfield

LOCAL SERVICES

Most of the services in this booklet are available to anyone experiencing housing insecurity or just doing it tough. Some of the services require a concession card and/or an intake interview. If you need a referral to help you access services, please get in touch with us.

The City of Port Adelaide Enfield (City of PAE) supports the wellbeing of every member of the community.

The Homelessness Connections Officer (HCO) can help you connect with services. The HCO can also advocate for your safety and wellbeing. For support, call the City of PAE and ask to speak to the Homelessness Connections Officer.

- City of PAE: **8405 6600** or free call **1800 629 888**
- Call Uniting SA for support to access housing: **8440 2110**
- After hours call Homeless Connect: **1800 003 308**
- If you are under 18 and experiencing homelessness or at risk of homelessness, the City of PAE Reconnect team can help. Call: **1800 448 999**
- For immediate threats to your safety call: **000**
- For 24/7 crisis counselling call Lifeline: **13 11 14**
- If you have experienced or are at risk of family and domestic violence and/or sexual assault call Respect: **1800 737 732** or Domestic Violence Crisis Line: **1800 800 098**

Please reach out if you need support



LEGEND



Free drinks



Free meal



Cheap groceries



Fruit and veg



Shower



GP/Nurse



Bread



Clothes



Blankets



Cleaning products



Laundry



Support services

SERVICES BY REGION

PORT ADELAIDE

Services in the area bounded by the Port Adelaide River, Lipson Street, and Grand Junction Road.

.....

1 Chat and Chew at Port Adelaide

58 Dale Street, Port Adelaide (Entry via back gate)

8440 2299

Alternate Wednesdays 2pm - 5pm

Drinks and a light meal.



2 CHATS Port Adelaide

Freemason's Hall

Cnr of Dale Street and Commercial Road, Port Adelaide

0419 807 896

Friday 9am - 10.30am

Free hot breakfast. Free milk, bread, vegetables. Clothes and more.



3 Lighthouse City Mission

40 Lipson Street, Port Adelaide

Tuesday and Thursday, 10am - 2pm

Wednesday, 3pm - 7pm

0487 727 012

Groceries, cleaning supplies, fruit and vegetables, clothes, drinks and meals available.



4 Orange Sky @ The Arches

77 Thomas Place, Port Adelaide

Thursday 5.30pm - 8pm, Saturday 2pm - 4.30pm

Orange Sky for laundry.



5 St Paul's Port Adelaide

1 Church Place, Port Adelaide

8447 7050

Tuesday to Saturday, 9.30am - 2pm

Op Shop. May have blankets and some groceries available.



6 Uniting SA

58 Dale Street, Port Adelaide

8440 2200

Monday to Friday 9am - 1.30pm

Free groceries and bread. Emergency relief voucher.



7 Uniting SA

64 Dale Street, Port Adelaide

8440 2110

Monday to Friday 9am - 5pm

Free clothes, groceries,
camping supplies.



LEFEVRE PENINSULA

Services in the area bounded by the Port Adelaide River, Bower Road and the sea.

.....

8 Fred's Van Semaphore

St Bede's Anglican, 200 Military Road, Semaphore

8112 8720

Sunday 6pm

Free hot meal. Free fruit and vegetables, and bread.



9 Pop Up Market

Lefevre Community Stadium

Cnr of Victoria Road and Marmora Terrace, Osborne

8405 6908

Wednesday 12pm - 2pm

Free takeaway meals. Groceries, fruit and vegetables, and bread.



10 St Bede's Anglican

200 Military Road, Semaphore

8449 5064

Tuesday 8.30am - 10am

Free hot breakfast, fruit and vegetables, bread, clothing.

Support services.



11 Lefevre Uniting Church

63 Gedville Road, Taperoo

8248 0066

Tuesday 11am - 1pm

Free frozen meals. Groceries, fruit and vegetables and bread.



12 The Port Church (Lefevre Baptist Church)

47 Carnarvon Terrace, Largs North

0410 588 907

Wednesday 5pm - 7pm during school terms

Free meal. Clothes, takeaways and groceries.



ADDITIONAL FOOD SERVICES OUTSIDE THE CITY OF PAE

Baptist Care Community Food Hub

216 Wright Street, Adelaide

8118 5200

Monday to Thursday 10am - 3pm

Low cost groceries, free bread, fruit and vegetables with any purchase.

Requires a concession card, student card or ImmiCard.



Fred's Van - Adelaide

Gawler Place, between Flinders Street and Wakefield Street

8112 8720

Saturday and Sunday 6pm, Monday – Friday 7pm

Free hot meal. Free fruit and vegetables, and bread.



Puddle Jumpers Western Food Hub

266A Port Road, Hindmarsh

7071 5270

7 days 10am - 2pm, 5pm - 9pm

Cheap groceries, free fruit and vegetables, and bread.

Shower truck Wednesday and Saturday, 10am - 2pm, after 8.30pm



EASTERN REGION

Services available in the area from Old Port Road to Sudholz Road

.....

13 Enfield Uniting Church

Cnr of Park Street and Main North Road, Sefton Park

7120 7837

Tuesday 10am - 12pm during school terms

Free meal, takeaway. Food hampers. Welcoming community.



14 Faithworks

5 Clifton Street, Blair Athol

8472 3347

Monday to Friday 10am - 4pm

Fruit and vegetables and bread. Groceries.

Some, but not all, items are free.



15 Fred's Van Kilburn

Kilburn Community Centre, 59 Gladstone Avenue, Kilburn

8112 8720

Thursday 7pm

Free meal. Fruit and vegetables, and bread.



16 Heart and Soul

30 Fourth Street, Wingfield

0411 962 337

Monday to Friday 10am - 2pm

Free fruit and vegetables, bread. Groceries.

Snacks and other items for small cost.



17 Junction Community Centre

2A May Terrace, Ottoway

8341 1334

Monday 12.30pm

Free meal. Groceries, fruit and vegetables, and bread.



18 North East Community Assistance Project

489 North East Road, Hillcrest

8266 2780

Monday to Friday 9.30am - 3.30pm

Free groceries. Occasionally bedding and furniture.



19 Random Acts of Coffee Pop-Up Coffee Van

Carpark Market

Junction Community Centre, 2A May Terrace, Ottoway

0431 778 548

Saturday 9am - 11am

Free coffee, free bread, kids' activities and good conversation.



20 St Paul's Lutheran

Cnr of Parker and Stuart Street, Ferryden Park

0402 439 334

Friday arrive by 11am

Food parcels. BYO bags that volunteers will fill with groceries.



21 Woodville Gardens Uniting Church

66 Ridley Grove, Woodville Gardens

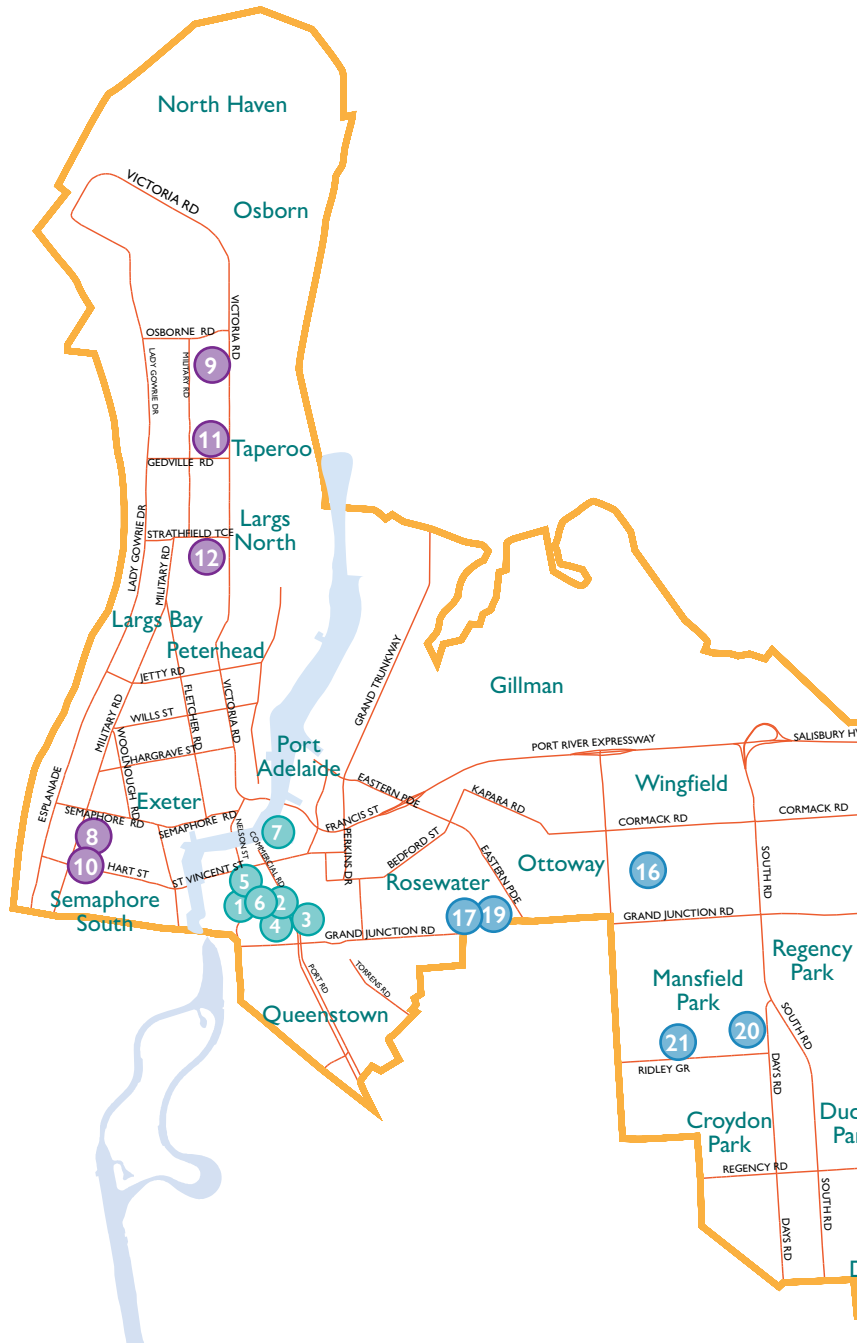
8345 4079

Tuesday and Thursday 9.30am - 12pm

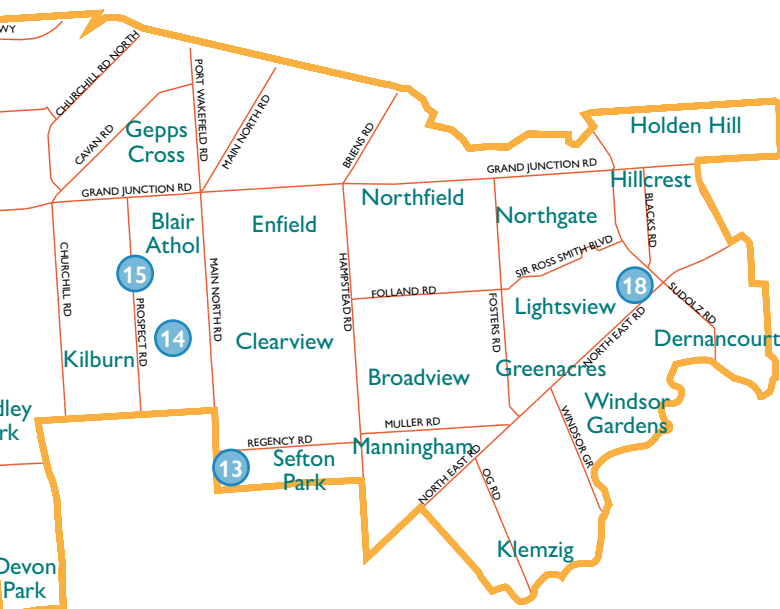
Free drinks and meal. Fruit and vegetables, and bread.



SERVICES MAP



- 1 Chat and Chew at Port Adelaide
- 2 CHATS Port Adelaide
- 3 Lighthouse City Mission
- 4 Orange Sky @The Arches
- 5 St Paul's Port Adelaide
- 6 Uniting SA
- 7 Uniting SA
- 8 Fred's Van Semaphore
- 9 Pop Up Market
- 10 St Bede's Anglican
- 11 Lefevre Uniting Church
- 12 The Port Church (Lefevre Baptist)
- 13 Enfield Uniting Church
- 14 Faithworks
- 15 Fred's Van Kilburn
- 16 Heart and Soul
- 17 Junction Community Centre
- 18 North East Community Assistance Project
- 19 Random Acts of Coffee Pop-Up Coffee Van
- 20 St Paul's Lutheran
- 21 Woodville Gardens Uniting Church



OTHER SERVICES

- Health Services
- Aboriginal Specific Services
- Other Services



HEALTH SERVICES

Adelaide Dental Hospital

Crn of North Terrace and George Street, Adelaide

1300 008 222

Emergency dental treatment. Requires referral from SA Dental clinics.

Baptist Care SA WestCare Centre

Millers Court, Adelaide

81 18 5200

GP, nurse, physiotherapy, visiting specialists.

Brian Burdekin Clinic

27 Selby Street, Adelaide

8231 4801

Bulk billed GP service.

Catherine House

8232 2282

Emergency accommodation, female only, counselling, domestic violence services.

Dental Clinic

Common Ground, 73 Light Square, Adelaide

8205 1600

Free dental service for people who are insecurely housed.

Feros Care

34 Commercial Road, Salisbury

1300 986 970

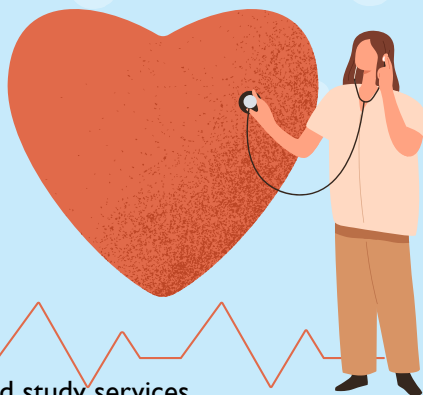
Local Area Coordinators, NDIS Partner in the community.

headspace

78–80 St Vincent Street, Port Adelaide

8215 6340

Mental health, alcohol and drug, and work and study services.



HEALTH SERVICES

Hutt Street Centre

258 Hutt Street, Adelaide

8418 2400

GP, nurse, specialist referrals.

Mental Health Triage (MHTS)

13 14 65

24 hours a day, 7 days a week

The main point of contact to state-funded mental health services. The MHTS can provide advice and information in a mental health emergency or crisis situation. It is staffed by mental health clinicians who will assess and refer to acute response teams where appropriate.

Metropolitan Youth Health

Westwood Health Centre, 1/40–44 Trafford Street, Angle Park

8243 5637

Care co-ordination, sexual health, ante-natal and post-natal care, drug and alcohol issues, programs for pregnant and parenting young women and their partners. Target group is vulnerable young people aged 12 – 25 years.

Relationships Australia

Ground Floor, 8 Butler Street, Port Adelaide

8340 2022

Children and parenting support, child sexual abuse counselling, family and domestic violence support, family dispute resolution, family mental health support, family relationship centres, family relationship counselling, gambling help service, personal counselling, and post-care support services.

Shine SA

57 Hyde Street, Adelaide

7099 5320

General Practice, sexual health physician, rapid HIV testing, sexual and reproductive health services.

HEALTH SERVICES

Shine SA

64C Woodville Road, Woodville

8300 5300

Sexual and reproductive health services, counselling.

Sobering Up Unit

62A Whitmore Square, Adelaide

8212 2855

24 hours a day, 7 days a week

Shelter in a safe, supportive environment for persons who are, due to their level of intoxication, assessed as being at risk of harm to themselves or others if not provided with a safe place to sober up. No referral required.

Trinity Medical Centre

Ground Floor, 28 College Street, Port Adelaide

8249 2000

Uniting Care Wesley Bowden

77 Gibson Street, Bowden

8245 7100

Escaping violence payment. Emergency assistance.

Urgent Mental Health Care Centre

215 Grenfell Street, Adelaide

8448 9100

Available 24/7 for people experiencing a mental health crisis.

Wellspace

1800 178 178

NDIS support co-ordination, psychosocial recovery coaching.



ABORIGINAL SPECIFIC SERVICES



Iwiri

1 Lipson Street, Port Adelaide

0458 955 963

Cultural activities (Art, Inma, choir) and support services to Anangu Pitjantjatjara Yankunytjatjara speakers.

Kurlana Tampawardli

45–47 Tapleys Hill Road, Hendon

8202 5610

Housing for people at risk of rough sleeping or overcrowding, safe return to country, links to other support. Clean needle program. After hours syringe vending machine.

KWY

8377 7822

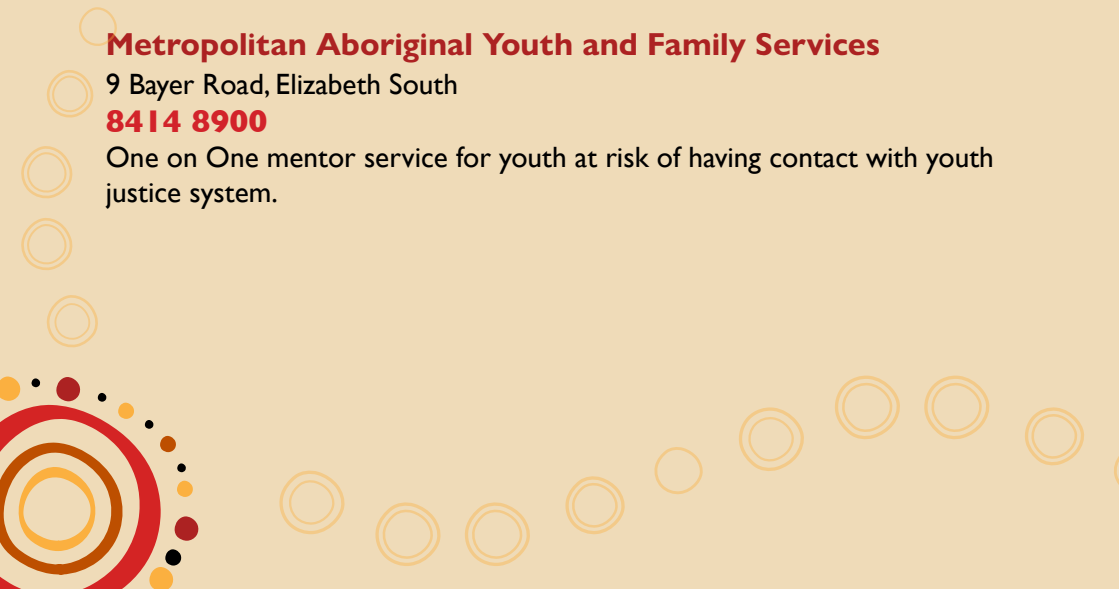
Services include: domestic and family violence, child protection, kinship care, disability, Aboriginal education outcomes, perpetrator intervention, and cultural training and consultancy.

Metropolitan Aboriginal Youth and Family Services

9 Bayer Road, Elizabeth South

8414 8900

One on One mentor service for youth at risk of having contact with youth justice system.



Nunkuwarrin Yunti

94 Grand Junction Road, Kilburn

8406 1600

Tackling tobacco. Other services available at various locations:

GP and health worker, dental, liver, podiatry, paediatrician, psychiatrist, psychologist, dietician, cardiologist, mental health recovery, and women's and children's family health.

Sonder

2/78–80 Dale Street, Port Adelaide

8209 0700

Health checks and support to navigate the healthcare system, home withdrawal program.

Tauondi Aboriginal College

1 Lipson Street, Port Adelaide

8240 0300

Education, training and employment services.

Tiraapendi Wodli Hub

36 Dale Street, Port Adelaide

0410 740 487

9.30am – 4.30pm

Various programs to strengthen the health, safety and lives of people in the Aboriginal community.

Wiru

8451 7557

NDIS services including social work, support co-ordination, counselling, psychology, occupational therapy, physiotherapy and art therapy.

Wonggangga Turtpandi

11 Church Street, Port Adelaide

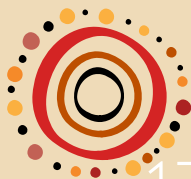
8240 9611

Monday to Friday 9am – 5pm

GP and specialist services. Transport available.

Culturally responsive homelessness case management.

Clean needle program.



OTHER SERVICES



Australia Post Offices

Port Adelaide Plaza

Shop 25, 200 Commercial Road, Port Adelaide

Talk to staff about using Post Office as postal address.

Enfield Plaza Shopping Centre

Shop 11, 445 Main North Road, Enfield

Talk to staff about using Post Office as postal address.

Churchill Centre

Shop 21, 380–408 Churchill Road, Kilburn

Talk to staff about using Post Office as postal address.

Baptist Care SA WestCare Centre

Millers Court, Adelaide

8188 5200

Monday to Friday 9am - 1pm Sunday 10.30am - 12pm

Showers, laundry, meals, support services, groceries, nurse/GP.



Findon Vet Centre

221 Grange Road, Findon

8347 3444

May help rough sleepers with pet care needs.



Hutt St Centre

258 Hutt Street Adelaide

8418 2500

Monday to Saturday 7.30am - 1pm

Showers, laundry, meals, support services, nurse/GP. Requires intake.



Paws and Pals

0490 818 879

Crisis care for pets.



Mobile Assistance Patrol (MAP Bus)

0411 474 368

7 days a week, 6pm - 2am

Transport for individuals who are vulnerable, under the influence of alcohol and other drugs, and at risk of harm or being involved in antisocial behaviour, minimising the contact with the justice system. Transport to home or to a safe place. Priority pick-up locations include Whitmore Square, North Terrace (OTR), West Terrace Park 23.

Salvation Army Community Services Kilkenny

1-7 Gray Street, Kilkenny

8130 6188

Food parcels, vouchers and financial counselling.



Salvation Army Ingle Farm

Crn of Bridge and Maxwell Roads,
Ingle Farm

8397 9333

Showers.





CITY OF
Port Adelaide Enfield