



CITY OF  
Port Adelaide Enfield

# P.A.E today

Christmas Tips | Food Relief | Opportunities for Seniors | Surprising Semaphore | Business Support







# Mayor Claire Boan

*The City of PAE acknowledges and pays respect to the traditional custodians of the land on which we stand, the Kaurna people of the Adelaide Plains and pays respect to Elders past, present and emerging. We recognise and respect their cultural heritage, beliefs and relationships with the land. We acknowledge that they are of continuing importance to the Kaurna people living today*

Welcome to our Summer edition of PAE Today. Here you will find the latest news and stories from our community and information about our programs and projects. You can also access PAE Today online at [paetoday.com.au](http://paetoday.com.au). We are in strange times, but we are adjusting well to social distancing, mask wearing, regular hand sanitising and limits on group gatherings as part of our daily lives. Now we can look forward to some warmer weather and restrictions easing as we head towards the end of 2020.

This year is also a milestone for me as it means I have been an Elected Member of the City of PAE for 10 years, with the past two years serving as Mayor.

I am honoured to represent PAE, and I am especially proud to be part of this wonderful community of people. As Mayor, I conduct Citizenship Ceremonies, as we formally welcome our newest Australians, and sit on a number of Boards to ensure that we have a voice and share information and collaborate with our colleagues from other Councils and levels of government.

My time as a Councillor in both the Parks and Port Adelaide Wards, and now as Mayor has given me the knowledge and intimate understanding of the diversity of the people who make PAE great. I am particularly proud of the work we are doing with our Kaurna and Aboriginal and Torres Strait Islander community, as we strengthen our continuing relationships between all people.

Living in PAE with a young family means we regularly participate in many local community activities, so I have first-hand experience of the facilities we have right here on our doorstep.

And, over the past few years, we have built and improved the Lights Community and Sports Centre, the Parks Library and Lefevre Community Stadium and many other notable places across our city, to provide much needed hubs for our community to connect.

PAE is a key region for logistics, defence, manufacturing and new start-up businesses, and I see a big future ahead as we continue to work with State and Federal Governments, industry and local businesses to grow our economy. By increasing our residential population, creating

new jobs, promoting private investment, supporting and organising appropriate major events and attracting more tourists, we will lead our recovery to emerge as a stronger and more sustainable City post COVID-19.

Over the past 10 years I have seen our organisation transform through great vision and leadership, and I thank my fellow Elected Members, CEO Mark Withers and the fabulous PAE staff for their support, innovation and contribution in making my past 10 years such a wonderful journey, and for everyone's extra efforts in this unprecedented year.

I also thank you for your support and I encourage you to keep talking to me and your local Ward Councillors so we can continue to work together to shape PAE's future as a liveable, sustainable and resilient City, with even stronger community and business connections. Enjoy the festive season, and keep following us at @CityofPAE on social media or read PAE Today online at [paetoday.com.au](http://paetoday.com.au)

## Summer Projects in the City of PAE *at a glance*

### Reserves

Blair Athol Reserve Toilets  
Charles ER reserve Bridge repairs  
Eric Sutton reserve floodlighting  
Goldingham St reserve playground removal  
George Crawford reserve fencing  
Haddington St reserve bridge repairs  
Large Bay reserve irrigation  
Laurie Knight Reserve upgrade  
Montpelier Square reserve upgrade  
Wandana reserve playground and shelter

### Traffic

Dudley Park Traffic management  
Hargrave/Woolnough Rd  
Semaphore roundabout

### Path Lighting

Largs Foreshore

### Road Reseal

Jean St, Broadview  
Lae Ave, Broadview  
August St, Hillcrest  
Balmoral St, Hillcrest  
Shropshire Ave, Hillcrest  
Stuart St, Hillcrest  
Yelland St, Hillcrest  
Lord Howe Ave, Northfield  
Mansfield Rd, Northfield  
Cheesman Ct, Queenstown  
Heathfield Dr, Queenstown  
Myhill Cr, Queenstown  
Pioneer Cct, Queenstown  
Prominent Pl, Queenstown  
Simpson Ave, Queenstown  
Westport Ave, Queenstown  
Ernest St, Taperoo

### Road Reseal (cont)

Windsor Gr, Windsor Gardens  
Wilkins Rd, Wingfield

### Road Reconstruction

Arthur Street, Northfield  
Barnes Ave, Northfield  
Justin Ave, Northfield  
Northfield Rd, Northfield  
Smith St, Port Adelaide

### Footpaths

Regency Rd, Regency Park  
William St, Semaphore South

### Drainage Projects

Birkenhead Naval Reserve  
Magazine Creek, Gillman  
Farringdon St & The Strand, Largs North

This is just a snapshot of the projects we're working on, to see a full list visit our website [cityofpae.sa.gov.au/projects](http://cityofpae.sa.gov.au/projects)

*Ward in focus*

# Klemzig

The Klemzig Ward includes the suburbs of Gilles Plains, Windsor Gardens and Klemzig. It is bordered by Grand Junction Road, North East Road and the River Torrens along with other non-arterial roads. The suburb Gilles Plains was named after the first Colonial Treasurer Osmond Gilles who owned a sheep station adjoining the Torrens River. Gilles Plains was predominantly a hay growing area of Adelaide through its early years. In 1874, it had the largest hay farm in South Australia owned by J.A.W. Sudholz.

*Total population***14,300***Total households***6,557***Overseas born***42.0%****Cr Tony Barca**

I have lived in Klemzig for over 40 years, and I am passionate about Council having open space for the community to enjoy. I believe these areas are important as they create harmony for a community, as it helps people get out and about and meet their neighbors. Its also very important that we have open areas for families as backyards are getting smaller. One particular space that is special to me is the Klemzig Reserve which I believe is the jewel in the crown of the City of PAE. It is very popular with the community, and it has become a hub for families and friends of all cultures to gather, particularly on weekends. It's rewarding to watch these people enjoying these great facilities, which include Klemzig community hall, and reserve with the sporting equipment, and the playground with its bright shade-cloths is a great attraction for children of all ages.

**Cr Paul Russell**

Klemzig ward has the Torrens River as it's southern-most boundary. The linear park developments and cycling and walking tracks make this an ideal place to live and raise a family. There's a wanderer's spirit in my family's heritage. So, to have lived in one spot in Klemzig for more than 30 years now is some sort of testament to the hold this place has through all that it offers. In that, our family are no orphans and even though our streets are changing through urban infill, there still remains in those that live in our area a strong sense of belonging to this place.



Klemzig Recreation Grounds includes Klemzig Oval, Klemzig Community Hall, a reserve and the Arthur Musolino Memorial Gardens. The site was upgraded during 2013- 2014.

The community hall now provides excellent access and commercial kitchen facilities suitable for a number of purposes including displays, exhibitions, fundraisers and presentations. The hall also provides direct

access to the oval and walking facilities around the reserve. The hall is surrounded by park facilities that include barbeques, seating and shelters, personal exercise equipment, walking paths, open community tennis courts and shaded playgrounds featuring natural play elements. There's also a native garden that gives a sense of the flora native to the area and an urban forest area for relaxation.

## *Notes from* PAE Council Meetings

**August**

- Resumed meetings in the Town Hall
- Heard deputations related to Australia Day and traffic devices
- Considered service impacts from NDIS changes
- Report on Beach Access mats which will return this summer
- Resolved to investigate more smoke-free areas following a petition from 9 year old resident Amber

**September**

- Received petition and heard deputation about planting Chinese Elm trees at Jetty Road, Largs Bay
- Voted to support bid to host the Ocean Globe Race in 2023
- Commenced consultation on land use near Portside Christian College
- Received report Aboriginal Lives Matter initiative
- Confirmed occupancy arrangements for new café at Kilburn Community Centre

**October**

- Voted to rename Taperoo Reserve after Aunty Josie Agius
- Deputation regarding our Community Land Management Plans from Port Adelaide Environment Protection Group
- Endorsement of Public Toilet plan
- Update about PAE it Forward initiative



# FOOD RELIEF IN PAE



While the COVID-19 pandemic has affected each of us in different ways, those living week to week or relying on casual work have been particularly affected. Local churches and food relief organisations have told us that they are seeing many more people needing food and basic essentials each week. Many of these people have never previously had to ask for help.

As part of our COVID-19 Recovery Strategy we've swung into action to make sure food

relief is available in a range of locations across our City. One of our newest locations is at Lefevre Community Stadium, where every Wednesday between 11am and 1pm you'll find a range of fresh fruit, vegetables, non-perishable foods and other essentials available at no cost. You'll also find some of our volunteer Food Crew on hand, cooking up a storm. Feel welcome to pop in and sample what's fresh that day. Thanks to Foodbank and Oz Harvest for their support in making this possible. Peterhead resident Kate (pictured) regularly

pops in to grab supplies which she uses to make meals for neighbours. Being able to support others in her community has helped Kate stay connected during COVID-19. We love being able to help people like Kate who are making a positive difference to others around them. If you're interested in joining our volunteer Food Crew, or our Flourish Team – who work together to build the health and wellbeing of the PAE community through a range of projects and activities, please contact Vanessa on

☎ 8405 6525



### Meals on Wheels

There are three Meals on Wheels services based in PAE and we provide them rent-free facilities to help them be able to deliver nutritious meals to residents.



Valued volunteers at the Food Centre

## GEPPS CROSS FOOD CENTRE

The Food Centre in Gepps Cross is a one stop shop for those trying to make their money go a little further. It includes a supermarket selling fresh produce, meat, dairy and a range of groceries at considerably reduced prices, Mel's Op Shop where you can pick up clothing and household items and Arnold's Café with cheap coffee, great snacks and good conversation.

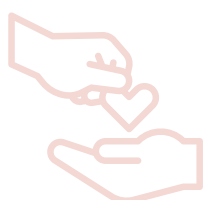
Their Easy Feast packs include a recipe card together with all the meat, vegetables, and other ingredients - right down to the

herbs and spices - to make a meal for 4 to 6 people for under \$11. So if you are feeling like a Beef Ragu, Chicken Stroganoff or Cottage Pie, pop in and grab everything you need to make one of more than 30 meals on the menu.

The Food Centre is run by volunteers, and has served the PAE community for over 30 years. They're often on the lookout for new volunteers, and would particularly love to hear from people with supermarket, logistics, or kitchen experience.

Open Monday to Friday, 8.30 till 5.00pm,  
5/580 Main North Road, Gepps Cross.

### Where else to go for help:



- **Masonic Lodge Hall (upstairs)**  
142-150 Commercial Road, Port Adelaide.  
Fridays 9.30am (free breakfast, clothing and food)
- **Junction Community Centre**  
2A May Terrace, Ottaway. Mondays 2pm (free food)
- **Nanna's Food Basket**  
67 Spring Street, Queenstown.  
Mondays 1-3pm (low cost and free food)
- **Heart and Soul Western Food Market**  
30 Fourth Street, Wingfield. Fridays 12pm (free food)

## CONTACT YOUR COUNCILLORS

At the City of PAE we have a Mayor and 17 Councillors that are located around seven wards. They are your representatives, so if you have any concerns, ideas or issues you would like to discuss with them please contact an Elected Member in your Ward.

### Mayor

**Claire Boan** • 8405 6773  
claire.boan@cityofpae.sa.gov.au

### Enfield Ward

**Cr Barbara Clayton** • 0411 816 800  
barbara.clayton@cityofpae.sa.gov.au  
**Cr Olivia Colombo** • 0448 258 279  
olivia.colombo@cityofpae.sa.gov.au  
**Cr Carol Martin OAM JP** • 0417 828 195  
carol.martin@cityofpae.sa.gov.au

### Klemzig Ward

**Cr Tony Barca** • 0418 891 321  
tony.barca@cityofpae.sa.gov.au  
**Cr Paul Russell** • 0407 500 881  
paul.russell@cityofpae.sa.gov.au

### Northfield Ward

**Cr Mark Basham JP** • 0418 809 364  
mark.basham@cityofpae.sa.gov.au  
**Cr Hannah Evans JP** • 0433 385 002  
hannah.evans@cityofpae.sa.gov.au  
**Cr Matt Osborn** • 0402 760 028  
matt.osborn@cityofpae.sa.gov.au

### Outer Harbor Ward

**Cr Peter Jamieson** • 0417 781 516  
peter.jamieson@cityofpae.sa.gov.au  
**Cr Vanessa Tulloch** • 0427 480 790  
vanessa.tulloch@cityofpae.sa.gov.au

### Parks Ward

**Cr John Croci JP** • 0481 091 022  
john.croci@cityofpae.sa.gov.au  
**Cr Kim Dinh** • 0410 729 255  
kim.dinh@cityofpae.sa.gov.au  
**Cr Kat Mitchell** • 0430 275 922  
kat.mitchell@cityofpae.sa.gov.au

### Port Adelaide Ward

**Cr Joost den Hartog** • 0416 845 204  
joost.denhartog@cityofpae.sa.gov.au  
**Cr Steve Vines** • 0413 975 064  
steve.vines@cityofpae.sa.gov.au

### Semaphore Ward

**Cr David Wilkins** • 0444 501 539  
david.wilkins@cityofpae.sa.gov.au  
**Cr Helen Wright** • 0439 485 737  
helen.wright@cityofpae.sa.gov.au




 The Tapliners dance group swishing in Enfield (Tap On Down ▶)

# A New Age for Older People

**T**he University of the Third Age (U3A) is an international organisation that provides education and support for people aged over 50 who are retired or working less than 20 hours a week. The 200 members of U3A Inner North are looking forward to an exciting year of learning at Enfield. New sessions for 2021 include Chinese language and culture, birds, badminton and gardening interests. Continuing courses include watercolours, mosaics, book groups, Mah-jong, armchair travel, French, out and about events and circle dancing. U3A Inner North President, Pauline Kemp

says "We are thrilled to now be able to offer our courses at the Enfield Community Centre. It is a venue with wonderful facilities, and we would like to thank the Council for their warm welcome. We hope to continue developing our programs and offer courses of interest to the local community for many years to come!"

U3A Inner North is managed and run by volunteers. Tutors and group leaders are volunteers who enjoy sharing their interests and skills and do not require special qualifications. New volunteers and course ideas are always welcome. Membership costs less than \$1 a week and Term One will commence Tuesday 2 February 2021.

To join or for more information, get in touch: ✉ [admin@u3ainnernorth.org.au](mailto:admin@u3ainnernorth.org.au) ☎ 0410 434 048



## TAP ON DOWN

### *Other opportunities at Enfield*

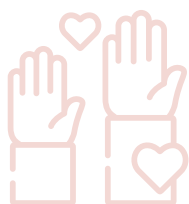
There's plenty to do at Enfield Community Centre. The Tapliners dance group rehearse Wednesdays, and practice performances in a number of dance styles. This friendly group always welcomes new members, so get tapping! The Regency Men's Shed is also co-located at Enfield, where both men and women can get involved in community projects, learn new skills and connect with others. Be sure to look out for the centre's Term 1 seniors program.

## TECH-SAVVY SENIORS

### *Cyber seniors staying connected*

During COVID-19, so many of us were relying on technology to be able to stay in touch. Our phones, laptops and tablets were important tools that enabled connection with friends and family interstate or overseas. We are working with the federal government to be able to provide support to seniors who want to increase their confidence using tech. Short courses and one on one workshops will be offered during 2021.

 8405 6705



### *Become a volunteer!*

We have lots of volunteer opportunities in our community programs that are perfect for retired professionals, like volunteering at Enfield Community Centre to help with the playgroup or Community Lunch. Or you can volunteer at the Greenacres Library toy collection next year. If you have an LR Class Licence, you can become a community bus driver and we're also looking for volunteers to join our new Food Crew.

 8405 6871

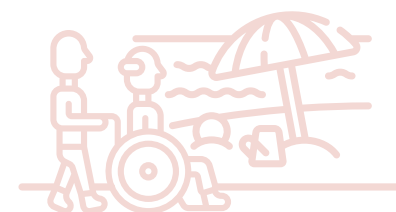


## HELP AT HOME SERVICES

### *Supporting our Community*

We're continuing to provide support for older people to help them stay living at home for longer. Our Community Services Program operates under the Commonwealth Home Support Program which aims to provide an entry-level home help service to eligible residents. We can help with social support, transport, household cleaning, home maintenance (like minor general repair and care of your house or yard, for example, changing light bulbs or replacing tap washers) or home modification (including the installation of safety aids such as alarms, ramps and support rails). To learn more visit our website and search:

Community Services



### *Beach access for all!*

Our beach mats make it easier for those using wheelchairs or walkers to cross the soft sand and reach the firmer sand at the water's edge. The beach access mats will be available at two sites in Semaphore over the summer months. Enjoy a dip in the sea or a walk along the shoreline!

## NEW CLUB ON THE BLOCK

### *Probus comes to North Haven*

A new Probus Club has come to PAE providing retirees opportunities to get active in their local community, and create meaningful connections with other people. North Haven Probus Club held their first meeting in October, and are now planning an exciting program of opportunities for 2021. To get involved pop into the North Haven Surf Lifesaving Club between 10am and 12pm each Thursday.



## MONSTER HOLIDAY PROGRAM

### *Library School Holidays*

Our Libraries are hosting a huge school holiday program this summer and the theme is 'Monster Madness!'. The aim is to expose children in the community to the exciting world of fantasy and allow them to explore all things whimsical. Through a variety of events and activities, children will be encouraged to use their imagination and flex their creative muscles. Creative play is important for developing critical thinking skills, and encourages experimentation and 'thinking outside the box'. There will be sessions both in the library and some to try at home, including a monster drawing workshop, a monster mash hip-hop dance class and a monster movie morning. For the full program, pop into your local City of PAE Library and pick up a copy of the *monster* three-week program from our friendly staff, or visit our website.

**Please note:** Due to limited room capacity for some sessions, a caregiver will be asked to drop off children. However, caregivers are encouraged to stay in the Library and explore. If you are bringing a preschool aged child to an applicable session please book for yourself and your child and stay in the session. Should COVID-19 restrictions increase, sessions at the Library may change to an online format. Take home packs will be provided and we can help you get online.

Book now: [cityofpae.evanced.info/signup](http://cityofpae.evanced.info/signup)

## MONSTER READING CHALLENGE

### *How many books can you read?*

We challenge you to further explore the exciting world of monsters by reading up to 30 books over the holiday period during our Monster Reading Challenge! If your family is currently participating in our 1001 Books Before School challenge (for children up to five years), you may be familiar with the Beanstack app which is used to track challenge progress. The Monster Reading Challenge will also be available on Beanstack, and there will be virtual badges to collect along the way. Kids who complete the challenge are invited to submit a book review or picture inspired by their reading adventures which will enter them in the draw to win a special monster prize.

 Stay up to date with our reading challenges: [cityofpae.beanstack.org](http://cityofpae.beanstack.org)

## UPDATING LIBRARY FACILITIES

### *Making our great libraries even greater*

As part of our ongoing commitment to provide high quality public amenities across PAE, we are making some improvements to the public toilets at Semaphore, Enfield and Port Adelaide Libraries. The improvements include facilities which are lighter, brighter and more energy efficient, and COVID Safe (fitted with sensor taps and soap dispensers). **As a result, some Libraries will need to close temporarily:**

Library	Closing	Opening
Enfield	Mon 16 Nov	Mon 21 Dec
Semaphore	Mon 16 Nov	Mon 14 Dec

Semaphore Library staff will continue to deliver regular programs from the Port Adelaide Library, and will host a Pop-up Library at the Semaphore RSL at 10 Semaphore Rd. Enfield Library will host a Pop-up Library at the back of the building.

A JP service will operate from Port Adelaide Library on Thursdays, 6.45-7.45pm. Please call us on 8405 6580 for confirmation before you visit. To check the services that will be on offer and to stay up to date with opening times and Library closures, please visit:

 [www.cityofpae.sa.gov.au/library](http://www.cityofpae.sa.gov.au/library)  
 Facebook @CityofPAELibraries







Greenacres Library

## NEW YEAR, NEW LOOK!

### *Greenacres Library gets a makeover*

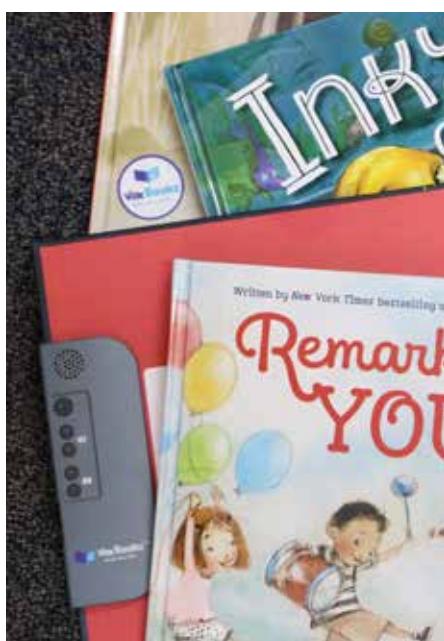
In 2021, Greenacres Library will temporarily close while it undergoes a makeover. The updates will include a new floor plan and shelving and a modernised look and feel. New community spaces will be developed which include comfortable places for people to collaborate, learn and create. The update will also mean more

spots for people to sit and work on their own devices, or to simply sit and enjoy reading a book. A second Toy Collection will also be available, allowing even more families across the city to access toys. We are on the lookout for volunteers who are keen to help maintain this new collection, or who can work with families to help them get the most benefit from these creative play and learning opportunities.



## Grab & Go update

Grab and Go titles are now available for a 14 day loan period, with a maximum of two items per card.



## IMMERSIVE READING

### *The benefits of Vox Books*

Have you heard of Vox Books? These special books have an inbuilt speaker, allowing readers to listen to the story as they read! This is called "immersion reading" and it is great for improving reading and literacy skills for everyone including people with dyslexia, those learning another language, or children learning to read. Vox Books help to boost engagement, comprehension and retention of the story. Grab a Vox Book today and try it out!

**Please note:** Two per card, 14 day loan.



## { PAE } People

**Rikki Cooke** | Treasure Boxes, CEO

Rikki Cooke is an amazing person. She's a social worker, a foster carer and a single mum. Rikki is also the CEO of Treasure Boxes Inc, a charity she founded in 2015, to bring comfort to the four emergency foster children in her care. Today, Treasure Boxes provide items such as cots, prams, clothes and toys, to families in need.

She has spent the better part of the last four years working full-time hours, unpaid, building an organisation that directly fills a gap in the social sector, while maintaining her day-job, caring for her sons and somehow finding the time to look after herself.

From humble beginnings, Treasure Boxes has grown to make a meaningful impact in the community in a short space of time. Rikki said it is truly a team effort, "The support from our volunteers and the community is incredible. It's about what we have all created together, every volunteer, every donator.

## Together we have created something special."

In 2019, the service provided practical assistance to more than 1,360 children. Rikki is modest about her achievements and of her approach to supporting the community she says "Aim high, stay humble." Rikki's contribution to improving life for children and families in the City of PAE has been recognised and for her efforts she was the recipient of our 2020 Australia Day Citizen of the Year Award.

To learn more about Treasure Boxes or to donate, visit [www.treasureboxes.org.au](http://www.treasureboxes.org.au)

If you know of any unsung heroes that should be acknowledged as PAE People, please contact

[communications@cityofpae.sa.gov.au](mailto:communications@cityofpae.sa.gov.au)

## ▼ The beach education patrol car and educators



## TEACHIN' OLD DOGS NEW TRICKS

### *Beach education a dog-gone must*

We are excited to be partnering with the City of Charles Sturt to deliver this year's beach education patrols along 20km of our shared coastline. These patrols play a key role in educating and reminding dog owners about safe and appropriate dog and owner behaviour on our beaches. Patrols will occur across the day, as well as after hours, to ensure we can effectively cover the busiest times and help make the beach a safe place for everyone to enjoy together this summer. **Please remember to keep your dog on a leash between 10am and 8pm during daylight savings time.**

Look out for our patrol car on the beach and feel free to stop by and say hi and ask any questions. Our Beach Education officer might have a giveaway for your furry friend too!

## GIFT OF LIFE

### *Blood service needs you*

As you are preparing a festive gift list, the Red Cross Blood Service are encouraging us to give the gift of life to someone this Christmas. If you make a donation of blood or plasma during December, you will receive a special card that

can be given to a loved one as a "gift of life" or hung as a keepsake on your tree.

 [www.donateblood.com.au](http://www.donateblood.com.au)

## GET THE BUZZ ON MOZZIES

### *Mosquito numbers set to increase*

In September, the Bureau of Meteorology announced the weather phenomenon La Nina had developed in the Pacific Ocean, which will result in a noticeable change in our local weather pattern until at least the end of the year. As a result of this change in the weather pattern, mosquito activity is expected to increase greatly compared to past years.

The chance of disease transmission in metropolitan areas is extremely low, however that doesn't detract from the fact that in large numbers mosquitoes can become a severe nuisance and extremely difficult to control once they mature from larvae to adults.

We are increasing treatment frequency and expanding the scope for Council controlled high risk mosquito breeding sites. We are also increasing monitoring in areas reported to have a high level of activity to help identify species and additional breeding locations.

Controlling mosquitoes is a team effort. We need

your assistance to eliminate potential breeding hotspots around your home or business, and utilise deterrents such as candles, coils and repellents.

If you believe you know of a breeding location that is outside of your control please report to us and one of our Environmental Health Officers will investigate.  **8405 6600**

To learn more visit our website and search:

Pests



## *Bin Collection Changes*

**This year, Christmas and New Year's Day are both on a Friday. That means, if your wheelie bin is usually collected on a Friday, these two collections will be completed one day later. If your bin collection day is any other day, collection will occur as normal.**





*The Festive season doesn't have to be a time of over-indulgence and waste. Here are some tips for thoughtful ways you can create less waste.*



- Give homemade gifts – who doesn't love a great homemade jam or chutney or a batch of beautiful biscuits.
- Get creative with gift wrapping - use newspaper, fabric or a scarf or tea-towel that can become part of a gift. If you are buying wrapping, make sure it's recyclable paper (no cellophane and no glitter).
- Instead of curling ribbon use twine, which can be reused in the garden to tie up tomatoes or other plants.
- Collect household batteries from Christmas toys or strands of lights and drop them off for recycling at the Civic Centre.
- Make a phone call, write an email or send a video message rather than sending a physical gift. Connecting in this way and sharing your time and thoughtfulness will be appreciated.
- Borrow or hire anything additional you need for hosting celebrations, including tablecloths, chairs, plates and cutlery. Friends and family might be happy to contribute in this way and it saves buying new items and then storing them all year long.
- Clean and organise your fridge before you do your festive food shopping and make sure you carefully store everything you buy so that it lasts well and doesn't end up going to waste.
- Arrange a Secret Santa to reduce the number of gifts. Selecting just one gift means you can put more time and thought into gifting something that will suit the recipient.
- Natural Christmas trees can be cut up to fit in your green bin.

The Festive season is fast approaching. The **Civic Centre** will operate normal business hours during the holiday period, but will be closed on public holidays and weekends. Our **five libraries and the Lights Community and Sports Centre** will close on Christmas Eve and reopen on Tuesday 29 December. For all other sites and services please check our website.

To make a request for a PAE service, visit our website any time of the day or night. You can track the progress of requests made via our website. Please contact the relevant authority to report any emergencies over this period. We wish all of our residents a safe Christmas and New Year, and are looking forward to a great start to 2021.

Over the Christmas break, our Community Buses will take a quick break too. We look forward to seeing you on board in 2021! **Please note: Our Community Buses will not be operating on Monday 14 December.**

Circuit	Last Service 2020	First Service 2021
1	Wed 23 Dec	Wed 6 Jan
2	Wed 23 Dec	Mon 4 Jan
3	Thu 17 Dec	Thu 7 Jan
4	Wed 23 Dec	Wed 6 Jan





Brian Jackman visiting PAE business owner Angelo Drakos

## KEEPING BUSINESSES BUSY

### COVID-19 Recovery

We're committed to doing all we can to help our community recover from the impacts of COVID-19. One of the most direct ways we've been able to support businesses to bounce back from the pandemic is to appoint a new Business Advisor. Brian Jackman is contributing to business recovery by providing free, face-to-face support for businesses in the PAE area. Brian is passionate about making a difference for small business, and helping people expand and grow their businesses. Brian puts business owners in touch with support, training, advice, resources and grants which can support them. He's provided advice on leasing terms, industry compliance and staffing matters. He's also well connected through local supply chains and contacts, and offers advice about buying goods and services.

One business that has benefitted from a meeting with Brian has been Captain Hook Seafood in the Greenacres Shopping Centre. Owner Angelo Drakos has had this shop for more than thirty years, and so has seen his fair share of economic ups and downs. Brian was able to equip Angelo with information about COVID-19 state and federal government support options, and tips for social distancing signage and markers.

We're all keen to see PAE business thrive. If you have a business in the PAE area, contact us and

ask for one of our advisors, who can provide you with confidential support on any topic related to your business.

 8405 6600

## TURNING WASTE INTO WORK

### Recycling creates opportunities for Minda

Recycling creates jobs and through Electronic Recycling Australia (ERA) in Ottoway, the City of PAE supports Minda to employ hundreds of supported workers living with a disability.

The City of PAE takes all of your electronic waste to ERA and they also have public drop off sites throughout PAE. As well as electronics, they accept expanded polystyrene, which cannot be recycled through your yellow bins at home. To save this material from landfill and ensure it is recycled there is a polystyrene drop off at ERA, 301 Grand Junction Road, Ottoway.

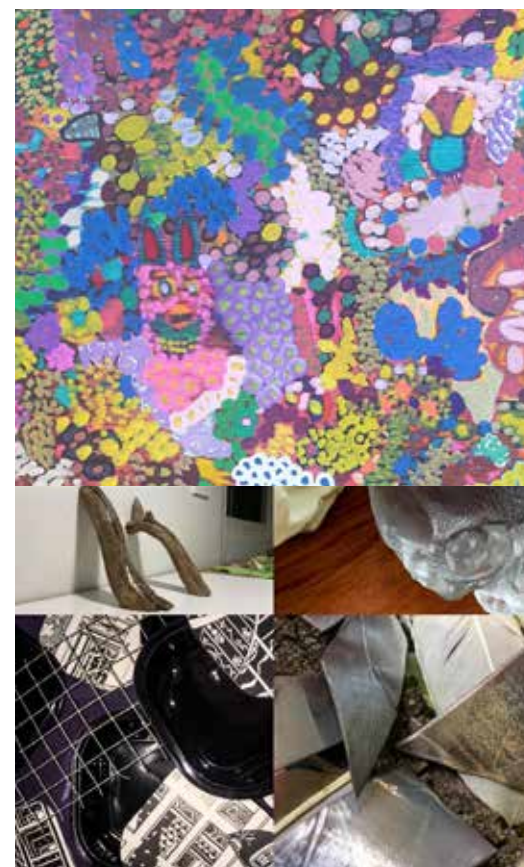
Polystyrene must be clean and free from any sticky tape, labels, food waste etc. There are different types of polystyrene. ERA accepts the hard polystyrene that breaks (ie not foam meat trays).

By recycling items such as electronics and polystyrene at ERA, you are not only helping to ensure that things are recycled in the correct way, but helping Minda to provide care, accommodation, support, activities and employment for people who need it.

## HOLD ME CLOSER, TINY GEMS

### Colour our City

This summer, be on the lookout for some creative, intriguing and whimsical artworks that have been popping up around PAE as part of our Tiny Gems project. We've commissioned nine artists to create these exciting small creations that bring new life, and possibly a new meaning to tiny spaces across PAE. During November and December we have unveiled plenty of new pieces of Tiny Gems art – keep an eye on our social media for hints about their locations.



▲ A few of the tiny gems scattered around PAE



### Immunisation Clinics

Immunisation helps stop the spread of illness to your family, neighbours, friends and the community.

Immunisation clinics will continue to be offered around PAE in 2021.

Dates and locations are available on our website.





Exeter residents enjoy their annual Christmas street party

## CELEBRATE GOOD TIMES

### Neighbours gather for the festive season

Things might be feeling a bit different this festive season, with many of Adelaide's favourite summer events and activities cancelled or postponed. Neighbourhood gatherings can help to bring local communities together and offer everyone a chance to meet the people who live around them. We want to encourage and support our community to host small local celebrations to mark the arrival of the festive season and summer. So we're providing

vouchers to help you purchase supplies for your celebration, and we can even help arrange road closures and insurance for neighbourhood gatherings on the street. A neighbourhood gathering is for up to 100 people and is held in a public space like a local park or garden, footpath or on the street with appropriate closures in place. Gatherings should be free and not include the sale of food.

Every year, a group of Exeter residents have a Christmas Eve get together to sing carols, exchange small gifts and take a moment of out

their busy end of year schedules to reconnect. Everyone on the street is invited, from the oldest resident, 90 year old musician Ray, to the newest residents who arrived during 2020. For the group, it's the chance to experience the true spirit of Christmas through the sharing of music, stories and good cheer. This is exactly the type of event we are seeking to support right across the City of PAE!

**For more information or to register your interest, visit our website and search:**

Neighbourhood Gatherings



Photograph: Beefacres Estate, c. 1900. Local History Collection.



## BEEFACRES ESTATE

{ PAE }  
{ Past }

The homestead Beefacres formed a large part of the area now known as Windsor Gardens. The property was first settled by Edward Mead Bagot in 1853, who named it 'Beefacres' because he drove his stock from New South Wales and fattened them up on the site to sell in Adelaide. Charles and John Hart, sons of the late Captain John Hart of Glanville purchased the property in 1876. During their ownership, the estate developed into a village known as the Beefacres Estate, which accommodated 40 people. In the 1890s, portions of the property

were sold to multiple buyers, and by 1960 it had been divided up into smaller lots for housing.

In 1849 the regally named section 'Windsor' was advertised as: "Raised above all neighbouring sections. Windsor commands an almost unbounded extent of mountainous, marine and woodland scenery. An inexhaustible quarry of excellent building stone exists near the river and purchasers will be supplied at the mere expense of cartage with building material worthy to constitute a South Australian Windsor Castle."



## PLAN FOR THE FUTURE

### Have your say on Planning and Design

The State Government's revised Planning and Design Code is now open for public consultation until 18 December 2020. Everyone has the opportunity to comment and familiarise themselves with the revised Code and experience how the new planning system will operate using the ePlanning platform. We have been working throughout the process and plan to submit a formal submission following the Council December meeting.

[www.plan.sa.gov.au](http://www.plan.sa.gov.au)





## DISCOVER SURPRISING SEMAPHORE

Since the late 1800s, South Aussies have been visiting Semaphore to breathe in the sea air and soak up the summer sun. Families would holiday in the numerous boarding houses, and people enjoyed regattas and concerts on the sand. During the Edwardian years, the attractions were huge carnivals, sideshows, tearooms and the Wondergraph Open Air Cinema.

Semaphore is still a fantastic seaside destination, where you can enjoy the carnival atmosphere, have lunch on the grass and take a dip in the sea. There are plenty of restaurants, pubs and cafes, offering a range of tasty treats for breakfast, lunch or dinner. You will also find a great selection of intriguing shops as you wander down Semaphore Road

Make sure you visit Semaphore these school holidays. If you're lucky, you might catch one of the 'surprising' visitors we've arranged.

**Sat 12 Dec - Tue 26 Jan**

### **Semaphore Summer Carnival**

Come and enjoy amusement rides, games and activities on the foreshore of Semaphore over the summer school holidays.

From 11am daily, closed Christmas Day.



**Sun 3 Jan and Sun 7 Feb**

### **Alfresco Semaphore**

Traders to bring their wares outdoors along Semaphore Road, plus there will be roving entertainers and musicians. So settle in for a long lunch or dinner and enjoy our favorite seaside strip.

#### **Civic Centre**

163 St Vincent St  
Port Adelaide

t: 8405 6600  
w: [www.cityofpae.sa.gov.au](http://www.cityofpae.sa.gov.au)  
e: [service@cityofpae.sa.gov.au](mailto:service@cityofpae.sa.gov.au)

#### **Town Hall**

34 Nile St, Port Adelaide

#### **Visitor Information Centre**

66 Commercial Rd, Port Adelaide  
t: 8405 6560

#### **Enfield Library Council Office**

1 Kensington Cres, Enfield  
t: 8405 6530

#### **Greenacres Library Council Office**

2 Fosters Rd, Greenacres  
t: 8405 6540

#### **Port Adelaide Library**

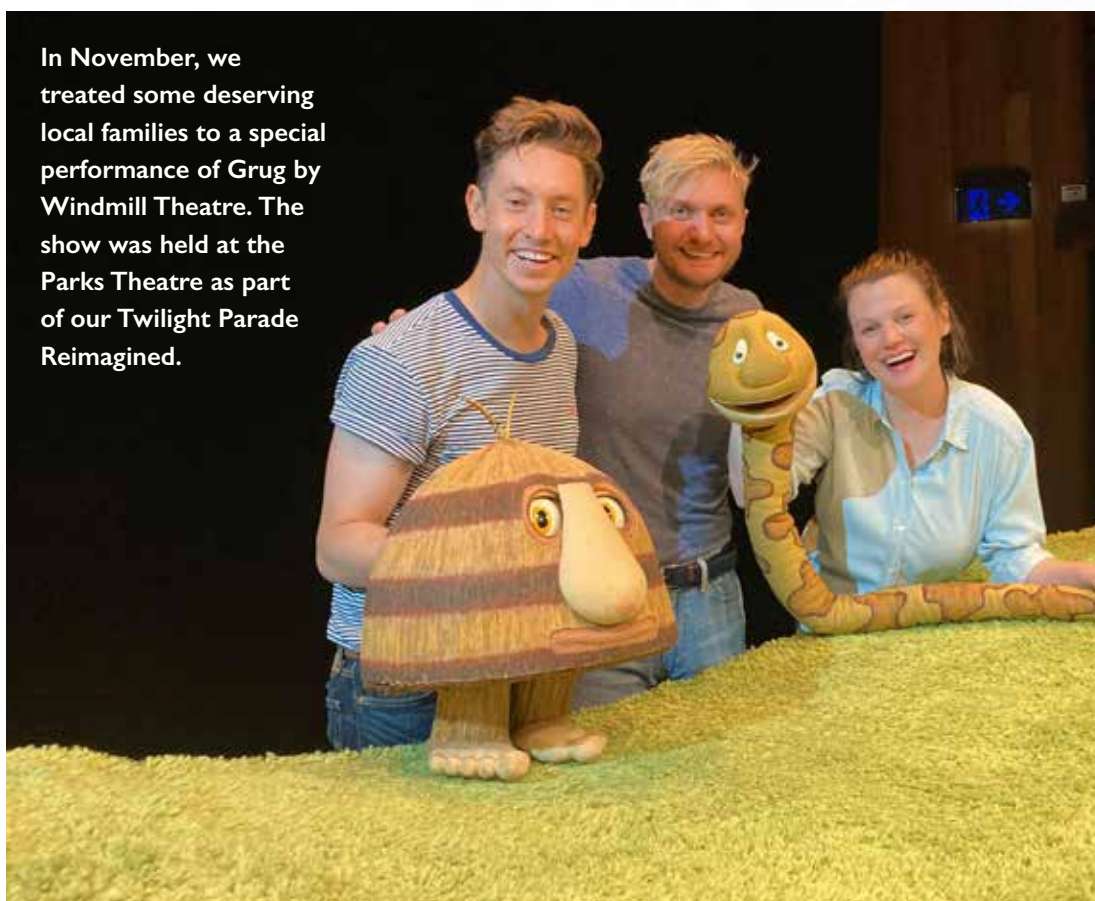
2 Church St, Port Adelaide  
t: 8405 6580

#### **Semaphore Library**

14 Semaphore Rd, Semaphore  
t: 8405 6540



In November, we treated some deserving local families to a special performance of *Grug* by Windmill Theatre. The show was held at the Parks Theatre as part of our Twilight Parade Reimagined.



## THINGS TO DO IN PAE

### Lefevre Community Stadium

Get active at Lefevre Stadium over summer, with sessions for roller skating, indoor tennis, basketball, netball or fitness sessions. The Stadium will also be open for casual basketball shooting and roller skating throughout January.

### Kilburn Community Centre

Pop into Kilburn on Wednesday 13 or 20 January for special skating events, crafts and giant games.

## UPCOMING EVENTS

Wed 16 - Sat 19 Dec

### Pinocchio

Feel festive at this pantomime in the Parks Theatre. With day and evening performances.

 [trybooking.com/BLEZS](https://trybooking.com/BLEZS)

Mon 11 - Thur 21 Jan

### Broadway Bootcamp

An opportunity for 5 -17 year olds to develop skills in singing, acting and dancing for musical theatre with experienced tutors.

 [www.parksrcs.ymca.org.au/theatre](http://www.parksrcs.ymca.org.au/theatre)

### Library program

Our five libraries will bring a full program of monster activities for families this Summer. Kids can create with Lego, make a bird feeder, join in Code Camp or build a hovercraft. Program details are available online and bookings are essential for most sessions.

### Monster reading challenge

Primary school aged children can join our Monster themed summer reading challenge through the Beanstack App. Earn virtual badges as you go.

Mon 18 Jan

### Community Film Night

We're taking our outdoor cinema screening to the drive in with a screening of *The Witches* at 9pm. Gates open 8pm and a snack bar will be operating.

Sat 30 Jan

### January Skate league

Bring your skateboards, scooters and bikes to participate in competitions and events for all levels at Osborne Skate Park.

## IN THE MARKET FOR A BARGAIN

### Fresh food and fascinating finds

There are some great local markets across PAE, where you can find local and affordable produce, along with other interesting bits and pieces.

### The People's Market

10am - 4pm | Fri, Sat & Sun

Local fruit and vegetables, organic and non-sprayed options, bakery and dairy.

*Hart's Mill, 43 St Vincent Street, Port Adelaide*

### Torrens Island Markets

6am - 1pm | Sun

Fresh fruits and vegetables and bakery items - all available along the banks of the Port River. *Moorehouse Rd via The Grand Trunkway, North Arm, Port Adelaide (near the power station)*

### Gepps X

From 7am | Sun

Rummage through a wide range of bric-a-brac at SA's biggest outdoor market, which also includes a big range of fresh fruit and vegetables.

*588 Main North Rd, Gepps Cross*

### Farm Direct Community Market

8am - 1pm | Sun

Providing an incredible array of products and foods by proud local businesses.

*Rear of Windsor Gardens Hotel, 410 North East Rd, Windsor Gardens*

### The Lights Fresh Community Markets

8am - 1pm | Sun

Fresh fruit and vegetables plus other products. A project of the Rotary Club of Regency Park.

*Stepping Stone Lightsview, 40 David Campbell Way, Lightsview (behind Hungry Jacks on Hampstead Road)*

### Fisherman's Wharf Markets

9am - 5pm | Sun

Enjoy the hustle and bustle as you explore two floors of variety stalls! Everything from books, toys, antiques and jewellery to lighting and dolls houses. Open public holiday Mondays.

*Black Diamond Square, Commercial Rd, Port Adelaide*

### Parks Library

46 Trafford St, Angle Park  
t: 8405 6550

### Hillcrest Community Centre

27-31 Queensborough Ave, Hillcrest  
t: 8266 7267

### Lefevre Community Stadium

541 Victoria Rd, Osborne  
t: 8405 6908

### Kilburn Community Centre

59 Gladstone Ave, Kilburn  
t: 8405 6730

### Enfield Community Centre

540 Regency Rd, Enfield  
t: 8405 6556

### The Lights Community & Sports Centre

Corner East Parkway and Hampstead Rd, Lightsview  
t: 8405 6670



WHERE IN THE FOREST DO THE GIANTS & FAIRIES SLEEP? FIND OUT AT...

# FRINGE: 6-7 @5085 MAR



**an extravaganza of magical mayhem & music**

**in the tranquillity of Stockade Botanical Park**

**Starring the WOW ON WHEELS Fringe Caravan**

**& Plenty More Besides!**



STOCKADE BOTANICAL PARK  
HOWARD RD NORTHFIELD

FOR FULL TIMES AND INFO VISIT  
[CITYOFPAE.SA.GOV.AU](http://CITYOFPAE.SA.GOV.AU)

